



CHAPTER 8

Deceased Kidney Donation

Reporting the number of deceased kidney donors in Australia and Aotearoa New Zealand and describing donor characteristics

CONTENTS

Summary and Highlights	3
Suggested Citation	3
Deceased Kidney Donors	4

SUMMARY AND HIGHLIGHTS

Chapter 8 describes the trends and characteristics in deceased organ donation for kidney transplantation in Australia and New Zealand. The data for this chapter come from the Australia and New Zealand Organ Donor (ANZOD) Registry. Much more information about deceased organ donors in Australia and New Zealand can be found on the ANZOD website, <https://www.anzdata.org.au/anzod/>.

Information about living kidney donors in Australia and New Zealand is available from the Australia and New Zealand Living Kidney Donor (ANZLKD) Registry, <https://www.anzdata.org.au/anzlkd/>.

This year the Organ Donation chapter has been split so that Living Kidney Donors are reported within the Australia and New Zealand Living Kidney Donor (ANZLKD) Registry Report, and this chapter will focus on deceased organ donation. The number of deceased donors continues to rise in both Australia and New Zealand, to 441 in Australia and 60 in New Zealand in 2024, though these are still not at the same peak as before the COVID-19 pandemic. The percentage of extended criteria donors has increased to 21% in Australia and 23% in New Zealand, and the number of donors after cardiac determination of death has also increased. The age of donors continues to increase within both countries, although the raw kidney donor risk index continues to oscillate and is below the peak of 2015 in Australia and seems static in New Zealand. There is ongoing variation in median KDPI of transplanting hospitals. The rates of non-utilisation in Australia continue to increase and are the highest they have been over the last decade. The converse is seen in New Zealand where the rates of non-utilisation continue to fall.

SUGGESTED CITATION

G Irish, C Davies, S Bateman, J Chen, D Forcey, F Kholmurodova, D Lee, K Marshall, H McCarthy, S McDonald, W Mulley, K Polkinghorne, K Richards, M Roberts, B Solomon, P Clayton.
48th Report, Chapter 8: Deceased Kidney Donation. Australia and New Zealand Dialysis and Transplant Registry, Adelaide, Australia. 2025. Available at: <http://www.anzdata.org.au>

DECEASED KIDNEY DONORS

Figure 8.1 shows the different types of deceased kidney donors in each country over 2015-2024.

Figure 8.1.1
Deceased Kidney Donor Type - Australia 2015-2024

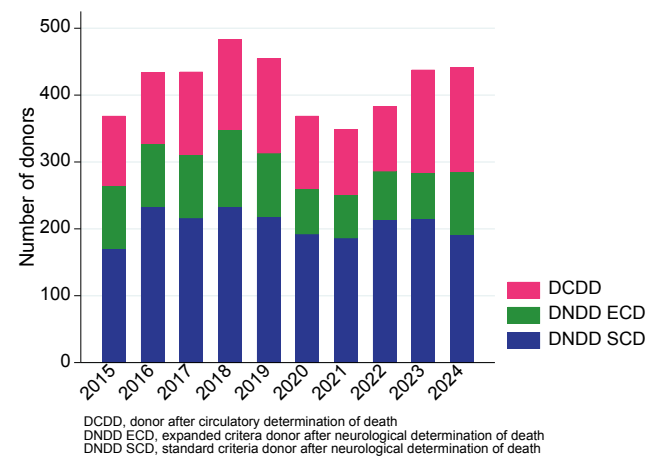
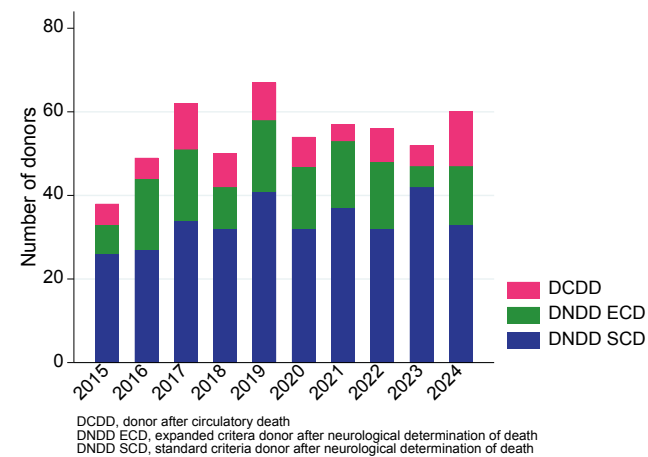


Figure 8.1.2
Deceased Kidney Donor Type - New Zealand 2015-2024



The causes of death of deceased donors are shown in Figure 8.2.

Figure 8.2.1
Cause of Donor Death - Australia 2015-2024

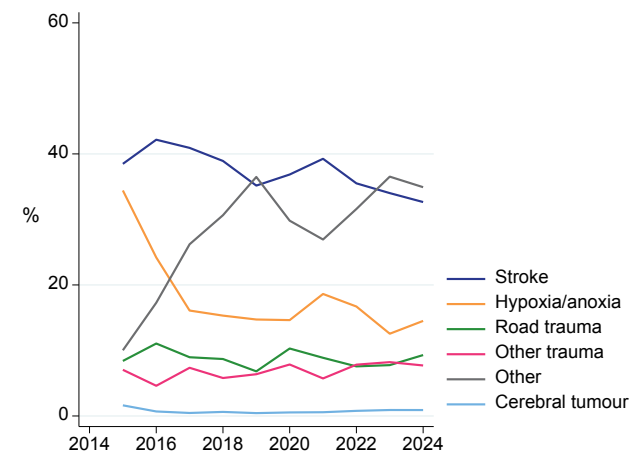


Figure 8.2.2
Cause of Donor Death - New Zealand 2015-2024

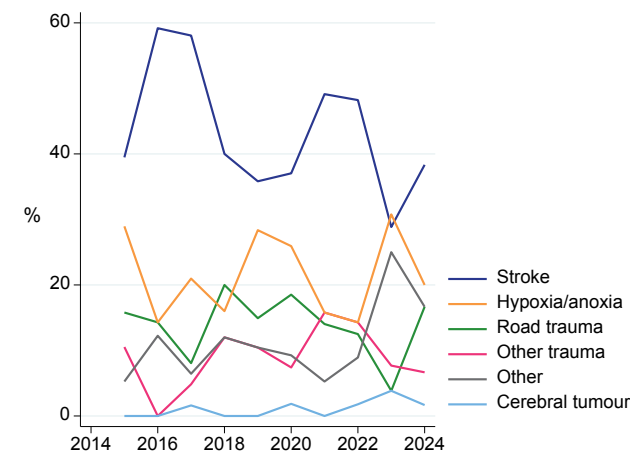


Figure 8.3 shows the mean age of deceased kidney donors in Australia and New Zealand since the ANZOD registry commenced in 1989 in Australia and 1993 in New Zealand.

Figure 8.3.1
Deceased Kidney Donor Age - Australia 1989-2024

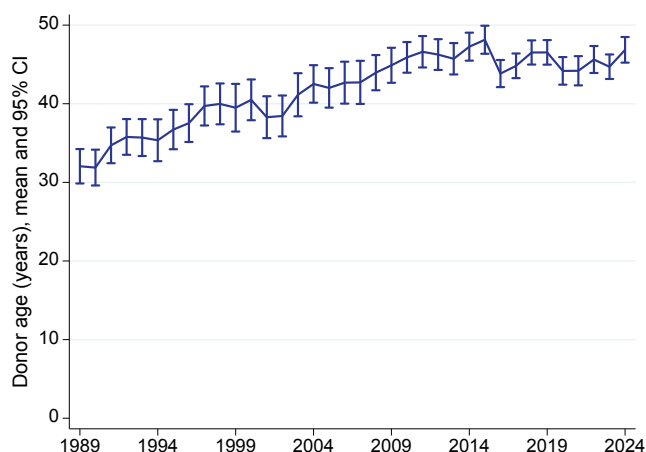


Figure 8.3.2
Deceased Kidney Donor Age - New Zealand 1993-2024

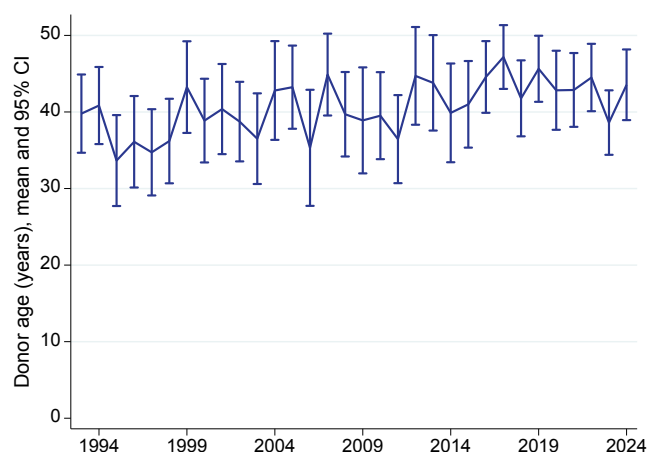


Figure 8.4 shows the mean raw Kidney Donor Risk Index (KDRI) of deceased kidney donors in Australia and New Zealand over the last 20 years.

Figure 8.4.1
Deceased Kidney Donor KDRI - Australia 2005-2024

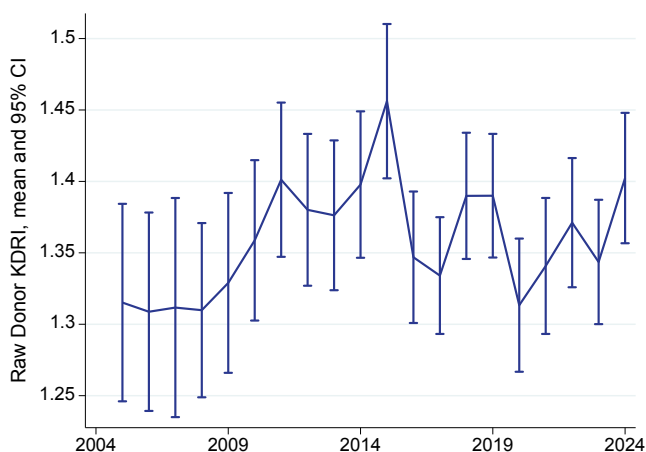


Figure 8.4.2
Deceased Kidney Donor KDRI - New Zealand 2005-2024

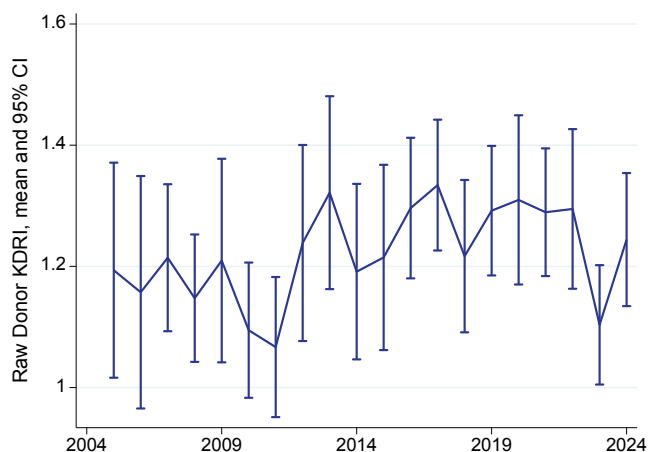


Figure 8.5 shows the median and IQR of the Kidney Donor Profile Index (KDPI) of deceased kidney donors in Australia and New Zealand over the last 5 years by transplant hospital, and Figure 8.6 shows the same data by transplant region.

Figure 8.5
Deceased Kidney Donor KDPI by Transplant Hospital - Australia and New Zealand 2020-2024

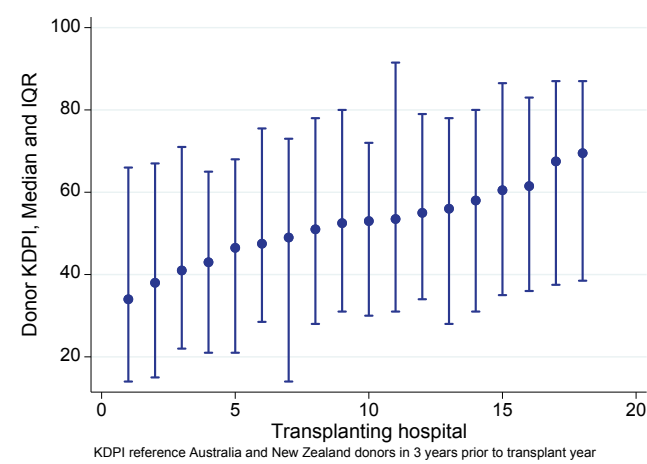


Figure 8.6
Deceased Kidney Donor KDPI by Transplant Region - Australia and New Zealand 2020-2024

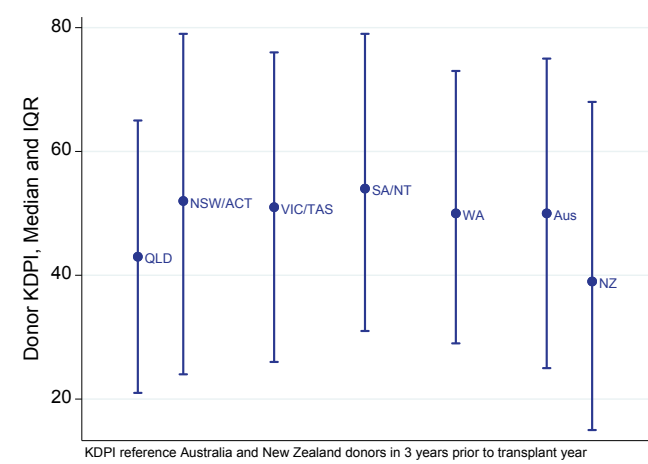


Figure 8.7 shows the non-utilisation rate of retrieved kidneys - the proportion of kidneys that were retrieved for the purpose of transplantation, but not ultimately transplanted into a recipient (either due to an absence of suitable recipients, or the kidney was deemed medically unsuitable after retrieval).

Figure 8.7.1
Non-utilisation Rate of Retrieved Kidneys - Australia 2015-2024

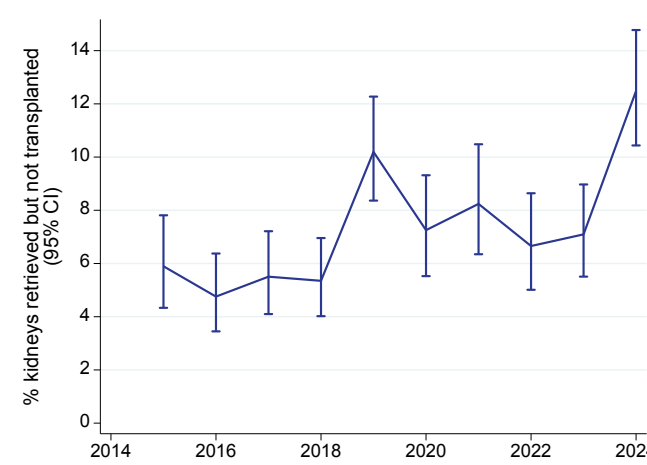
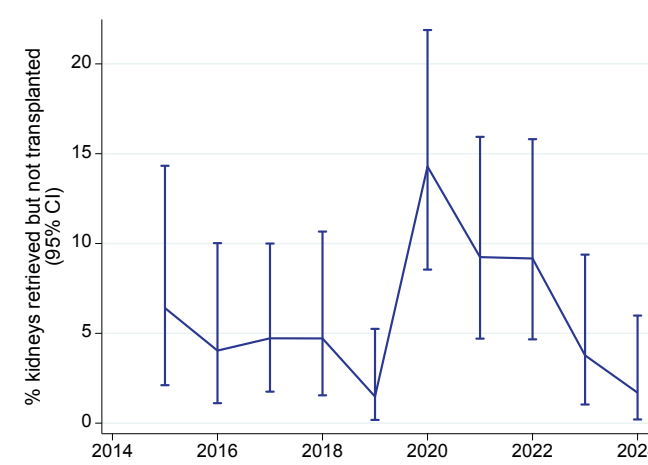
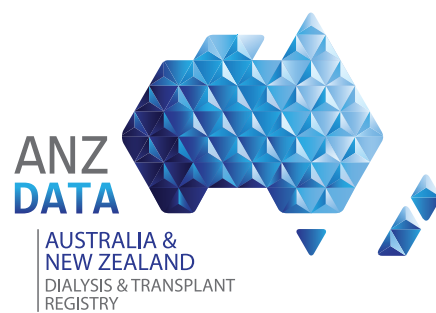


Figure 8.7.2
Non-utilisation Rate of Retrieved Kidneys - New Zealand 2015-2024





CHAPTER 8

Deceased Kidney Donation