

Quality Indicators

Annual Report

01 January 2024 - 31 December 2024

Analysis Database

PUBLISHED 25 September 2025

The release of the Quality Indicator report is now an ANZDATA/ANZSN co-badged report. This information is provided as it is reported to ANZDATA. The reporting arrangements provide additional information to units on quality indicators. Units should use these data to monitor clinical practice and outcomes.

Suggested Citation

ANZDATA Registry. 2024 Quality Indicators Annual Report - Analysis Database. Australia and New Zealand Dialysis and Transplant Registry, Adelaide, Australia. 2025. Available at: <http://www.anzdata.org.au>

Contents

1	Incidence of Peritonitis in Patients Treated with Peritoneal Dialysis	2
1.1	Adult	2
1.2	Paediatric	6
2	Dialysis Access Planning at Commencement of Dialysis	7
2.1	All Dialysis Access Planning	7
2.1.1	Adult	7
2.1.2	Paediatric	13
2.2	Vascular Access at First Haemodialysis	14
2.2.1	Adult	14
2.2.2	Paediatric	20
2.3	HD Vascular Access Planning	21
2.3.1	Adult	21
2.3.2	Paediatric	27
2.4	PD Catheter Planning	28
2.4.1	Adult	28
2.4.2	Paediatric	32
3	Transplantation Wait Listing	33
3.1	Adult	33
3.2	Paediatric	38
4	ANZDATA annual data survey timeliness	39
5	Kidney Replacement Therapy (KRT) Modality	43
5.1	Incident Modality	43
5.1.1	Adult	43
5.1.2	Paediatric	47
5.2	Prevalent Modality	48
5.2.1	Adult	48
5.2.2	Paediatric	52

1 Incidence of Peritonitis in Patients Treated with Peritoneal Dialysis

1.1 Adult

This table presents the total number of peritonitis episodes and patient exposure in years by Centre. Patient totals, exposure and peritonitis episodes were determined using the hospital at which the patient was receiving treatment at the time. So, if a patient transferred units during the observation period, the subsequent exposure and peritonitis episodes were allocated to the new unit. Months per episode (PM per Episode) is also reported. This should be interpreted as the average number of months between episodes of peritonitis; it can not be calculated if the peritonitis rate is zero. Patients are excluded from this adult report if they were treated at a paediatric hospital. In rare cases when patients younger than 18 years are treated at an adult centre, they are included in this adult report. Any patients 18 years and older treated at a paediatric hospital are excluded from this report. This quality indicator is presented for Australia only as New Zealand peritonitis episode data is reported through the New Zealand Peritoneal Dialysis Registry. Note that the 2022 International Society for Peritoneal Dialysis peritonitis guideline has a target that the overall peritonitis rate should be no more than 0.40 episodes per year at risk.

Centre	PD Patients	No of Episodes	Person Years	Rate (95% CI)	PM per Episode (95% CI)
Australia	3872	719	2692.71	0.27 (0.25-0.29)	44.94 (41.77-48.42)
Queensland	728	143	487.00	0.29 (0.25-0.35)	40.87 (34.69-48.49)
Bundaberg Hospital	17	2	12.89	0.16 (0.02-0.56)	77.36 (21.41-638.75)
Cairns Hospital	54	5	34.19	0.15 (0.05-0.34)	82.06 (35.16-252.74)
Gold Coast University Hospital	64	7	44.58	0.16 (0.06-0.32)	76.43 (37.09-190.10)
Hervey Bay Hospital	27	11	19.78	0.56 (0.28-0.99)	21.58 (12.06-43.23)
Ipswich Hospital	31	6	21.47	0.28 (0.10-0.61)	42.94 (19.73-117.01)
Mackay Base Hospital	20	1	13.70	0.07 (0.00-0.41)	164.40 (29.51-6493.55)
Metro South Kidney and Transplant Services	229	42	148.92	0.28 (0.20-0.38)	42.55 (31.48-59.04)
<i>Logan Hospital</i>	<i>96</i>	<i>23</i>	<i>63.93</i>	<i>0.36 (0.23-0.54)</i>	<i>33.36 (22.23-52.62)</i>
<i>Princess Alexandra Hospital</i>	<i>133</i>	<i>19</i>	<i>84.99</i>	<i>0.22 (0.13-0.35)</i>	<i>53.68 (34.37-89.15)</i>
Rockhampton Hospital	34	8	28.58	0.28 (0.12-0.55)	42.87 (21.76-99.30)
Royal Brisbane and Women's Hospital	112	21	73.16	0.29 (0.18-0.44)	41.80 (27.35-67.53)
Sunshine Coast University Hospital	24	1	11.49	0.09 (0.00-0.48)	137.89 (24.75-5446.33)
Toowoomba Hospital	53	13	36.76	0.35 (0.19-0.60)	33.93 (19.84-63.72)
Townsville University Hospital	63	26	41.47	0.63 (0.41-0.92)	19.14 (13.06-29.30)
New South Wales	1376	312	1000.60	0.31 (0.28-0.35)	38.48 (34.44-43.14)
Coffs Harbour Hospital	7	1	6.55	0.15 (0.00-0.85)	78.55 (14.10-3102.73)
Concord Repatriation General Hospital	47	4	32.48	0.12 (0.03-0.32)	97.45 (38.06-357.67)
Dubbo Base Hospital	12	2	7.64	0.26 (0.03-0.95)	45.83 (12.69-378.45)

continued on next page

continued from previous page

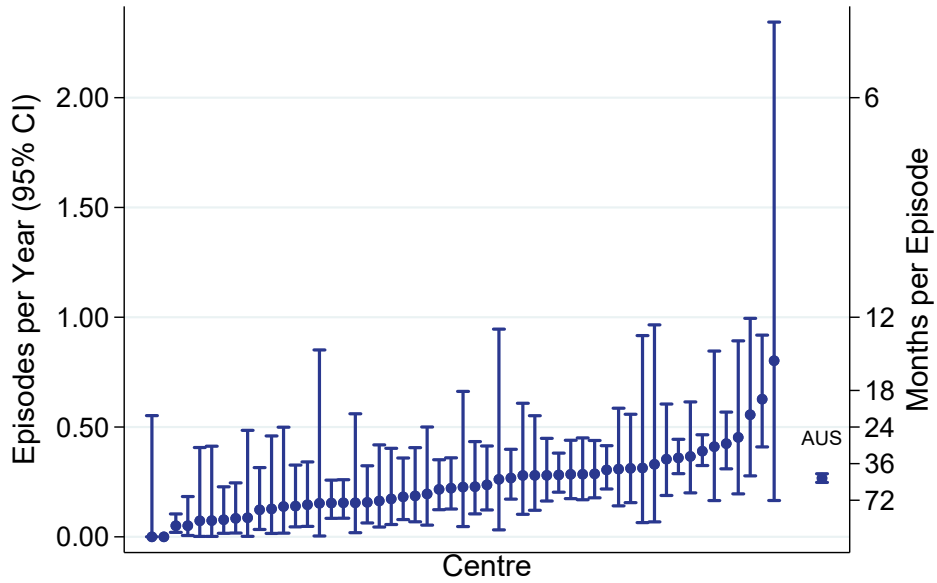
Centre	PD Patients	No of Episodes	Person Years	Rate (95% CI)	PM per Episode (95% CI)
Gosford Hospital	30	4	20.48	0.20 (0.05-0.50)	61.43 (23.99-225.46)
Gregory Hills B.Braun Renal Care Centre	1	0	0.00	0.00 (0.00-1347.36)	. (0.01-.)
John Hunter Hospital	87	17	60.70	0.28 (0.16-0.45)	42.85 (26.76-73.55)
Lismore Base Hospital	23	7	17.05	0.41 (0.17-0.85)	29.22 (14.18-72.68)
Manning Rural Hospital	18	1	13.50	0.07 (0.00-0.41)	162.00 (29.08-6398.82)
Orange Health Service	12	3	9.08	0.33 (0.07-0.97)	36.33 (12.43-176.15)
Port Macquarie Base Hospital	9	0	6.68	0.00 (0.00-0.55)	. (21.74-.)
Royal North Shore Hospital	81	18	63.15	0.29 (0.17-0.45)	42.10 (26.64-71.04)
Royal Prince Alfred Hospital	46	6	32.15	0.19 (0.07-0.41)	64.31 (29.54-175.23)
South West Sydney Renal Service	315	86	239.14	0.36 (0.29-0.44)	33.37 (27.02-41.72)
St George Hospital	54	5	35.71	0.14 (0.05-0.33)	85.71 (36.73-263.97)
St Vincent's Hospital Sydney	25	8	17.66	0.45 (0.20-0.89)	26.49 (13.45-61.36)
Tamworth Hospital	20	3	13.24	0.23 (0.05-0.66)	52.95 (18.12-256.76)
The Prince of Wales Hospital	41	5	28.95	0.17 (0.06-0.40)	69.48 (29.77-213.98)
Tweed Valley Hospital	17	3	9.57	0.31 (0.06-0.92)	38.26 (13.09-185.55)
Wagga Wagga Base Hospital	23	2	15.73	0.13 (0.02-0.46)	94.36 (26.12-779.14)
Western Sydney Renal Health Services	438	125	320.47	0.39 (0.32-0.46)	30.76 (25.82-36.96)
<i>Nepean Hospital</i>	62	17	44.72	0.38 (0.22-0.61)	31.57 (19.72-54.19)
<i>Westmead Hospital</i>	376	108	275.75	0.39 (0.32-0.47)	30.64 (25.38-37.35)
Wollongong Hospital	70	12	50.67	0.24 (0.12-0.41)	50.67 (29.01-98.06)
Australian Capital Territory	55	9	39.39	0.23 (0.10-0.43)	52.52 (27.67-114.86)
Canberra Hospital	55	9	39.39	0.23 (0.10-0.43)	52.52 (27.67-114.86)
Victoria	948	127	630.45	0.20 (0.17-0.24)	59.57 (50.07-71.46)
Alfred Hospital	116	16	72.21	0.22 (0.13-0.36)	54.16 (33.35-94.75)
Austin Hospital	46	9	29.17	0.31 (0.14-0.59)	38.90 (20.49-85.06)
Bendigo Hospital	65	8	43.91	0.18 (0.08-0.36)	65.87 (33.43-152.57)
Eastern Health Integrated Renal Services	56	3	38.49	0.08 (0.02-0.23)	153.98 (52.69-746.65)
Monash Medical Centre	194	40	131.20	0.30 (0.22-0.42)	39.36 (28.90-55.09)
Northern Health Service Melbourne	49	3	35.69	0.08 (0.02-0.25)	142.75 (48.85-692.22)
St Vincent's Hospital Melbourne	106	16	74.03	0.22 (0.12-0.35)	55.52 (34.19-97.14)
The Royal Melbourne Hospital	144	14	90.30	0.16 (0.08-0.26)	77.40 (46.13-141.57)
University Hospital Geelong Barwon Health	38	4	24.46	0.16 (0.04-0.42)	73.39 (28.66-269.35)

continued on next page

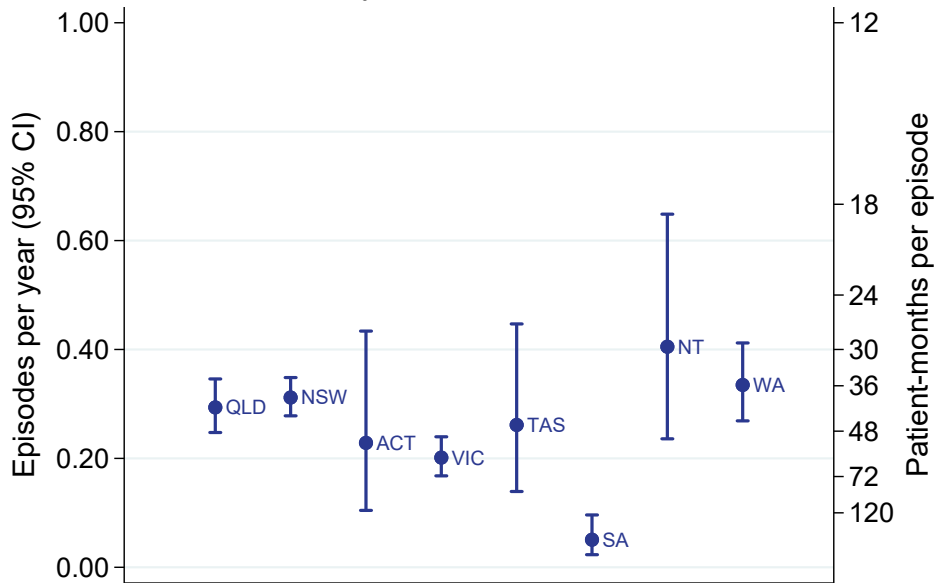
continued from previous page

Centre	PD Patients	No of Episodes	Person Years	Rate (95% CI)	PM per Episode (95% CI)
Western Health Service	134	14	90.99	0.15 (0.08-0.26)	77.99 (46.48-142.66)
Tasmania	71	13	49.74	0.26 (0.14-0.45)	45.91 (26.85-86.23)
Launceston General Hospital	47	11	35.27	0.31 (0.16-0.56)	38.47 (21.50-77.07)
Royal Hobart Hospital	24	2	14.47	0.14 (0.02-0.50)	86.83 (24.04-717.01)
South Australia	248	9	177.73	0.05 (0.02-0.10)	236.97 (124.83-518.24)
Central Northern Adelaide Renal Service	199	7	138.33	0.05 (0.02-0.10)	237.14 (115.09-589.82)
Flinders Medical Centre	49	2	39.40	0.05 (0.01-0.18)	236.40 (65.44-1952.05)
Northern Territory	59	17	41.97	0.41 (0.24-0.65)	29.63 (18.51-50.86)
Alice Springs Hospital	6	3	3.74	0.80 (0.17-2.34)	14.96 (5.12-72.54)
Royal Darwin Hospital	53	14	38.23	0.37 (0.20-0.61)	32.77 (19.53-59.94)
Western Australia	387	89	265.83	0.33 (0.27-0.41)	35.84 (29.13-44.63)
Fiona Stanley Hospital	129	24	89.59	0.27 (0.17-0.40)	44.80 (30.11-69.92)
Royal Perth Hospital	104	20	70.23	0.28 (0.17-0.44)	42.14 (27.29-68.99)
Sir Charles Gairdner Hospital	154	45	106.00	0.42 (0.31-0.57)	28.27 (21.12-38.75)

PD Peritonitis Rate, Adults
01 January 2024 - 31 December 2024



PD Peritonitis Rate, Adults
By Jurisdiction, 2024



1.2 Paediatric

This table presents the total number of peritonitis episodes and patient exposure in years by Centre. Patient totals, exposure and peritonitis episodes were determined using the hospital at which the patient was receiving treatment at the time. So, if a patient transferred units during the observation period, the subsequent exposure and peritonitis episodes were allocated to the new unit. Months per episode (PM per Episode) is also reported. This should be interpreted as the average number of months between episodes of peritonitis; it can not be calculated if the peritonitis rate is zero. Patients are included in this paediatric report if they were treated at a paediatric hospital. In rare cases when patients younger than 18 years are treated at an adult centre, they are included in the adult report. Any patients 18 years and older treated at a paediatric hospital are included in this report. Note that the 2022 International Society for Peritoneal Dialysis peritonitis guideline has a target that the overall peritonitis rate should be no more than 0.40 episodes per year at risk.

Centre	PD Patients	No of Episodes	Person Years	Rate (95% CI)	PM per Episode (95% CI)
Australia	70	14	41.89	0.33 (0.18-0.56)	35.90 (21.40-65.67)
Queensland	22	4	14.93	0.27 (0.07-0.69)	44.78 (17.49-164.35)
Child and Adolescent Renal Service	22	4	14.93	0.27 (0.07-0.69)	44.78 (17.49-164.35)
New South Wales	8	1	5.29	0.19 (0.00-1.05)	63.44 (11.39-2505.80)
Sydney Children's Hospital	5	0	3.01	0.00 (0.00-1.23)	. (9.78-.)
The Children's Hospital at Westmead	3	1	2.28	0.44 (0.01-2.44)	27.37 (4.91-1080.96)
Victoria	28	7	14.25	0.49 (0.20-1.01)	24.43 (11.86-60.77)
Monash Children's Centre	9	1	4.76	0.21 (0.01-1.17)	57.13 (10.25-2256.65)
Royal Children's Hospital	19	6	9.49	0.63 (0.23-1.38)	18.98 (8.72-51.73)
South Australia	7	1	3.50	0.29 (0.01-1.59)	41.99 (7.54-1658.42)
Women's and Children's Hospital	7	1	3.50	0.29 (0.01-1.59)	41.99 (7.54-1658.42)
Western Australia	5	1	3.92	0.25 (0.01-1.42)	47.08 (8.45-1859.56)
Perth Children's Hospital	5	1	3.92	0.25 (0.01-1.42)	47.08 (8.45-1859.56)
New Zealand	10	3	5.74	0.52 (0.11-1.53)	22.94 (7.85-111.25)
Starship Children's Hospital	10	3	5.74	0.52 (0.11-1.53)	22.94 (7.85-111.25)

2 Dialysis Access Planning at Commencement of Dialysis

2.1 All Dialysis Access Planning

2.1.1 Adult

This table presents the numbers of patients beginning haemodialysis or peritoneal dialysis and the percentage starting with a permanent access (an AVF or AVG for haemodialysis and all peritoneal dialysis patients) during the observation window by Centre, where dialysis was the first kidney replacement therapy. Patients are excluded from this adult report if they were treated at a paediatric hospital. In rare cases when patients younger than 18 years are treated at an adult centre, they are included in this adult report. Any patients 18 years and older treated at a paediatric hospital are excluded from this report. Some Centres did not report type of first access for all new HD patients. The percent beginning with a permanent access is based on the number of patients with data available for first access. Finally, the total of Early Referrals (patients seen more than 3 months before first treatment) and the percentage of Early Referrals with a permanent access are also presented.

Centre	Dialysis Patients	AVF or AVG or PD	Vascular Catheter	Missing Access Data	% of AVF or AVG or PD (95 % CI)	Early Referral	% of Early Referrals with AVF or AVG or PD
Australia	3353	1831	1520	2	55 (53-56)	2856	60 (59-62)
Queensland	713	381	332	0	53 (50-57)	610	60 (56-64)
Bundaberg Hospital	23	14	9	0	61 (39-80)	19	68 (43-87)
Cairns Hospital	74	47	27	0	64 (52-74)	64	73 (61-84)
Cairns Private Hospital	4	3	1	0	75 (19-99)	4	75 (19-99)
Chermside Dialysis Centre	6	4	2	0	67 (22-96)	6	67 (22-96)
Gold Coast Private Hospital	6	0	6	0	0 (0-46)	0	-
Gold Coast University Hospital	59	23	36	0	39 (27-53)	48	46 (31-61)
Henry Dalziel Dialysis Clinic - Greenslopes	24	14	10	0	58 (37-78)	23	61 (39-80)
Hervey Bay Hospital	24	11	13	0	46 (26-67)	20	55 (32-77)
Ipswich Hospital	32	12	20	0	38 (21-56)	27	41 (22-61)
John Flynn Private Hospital	5	1	4	0	20 (1-72)	5	20 (1-72)
Mackay Base Hospital	16	12	4	0	75 (48-93)	16	75 (48-93)
Mater Hospital, Brisbane	12	8	4	0	67 (35-90)	10	80 (44-97)
Mater Hospital, Townsville	5	1	4	0	20 (1-72)	5	20 (1-72)
Metro South Kidney and Transplant Services	133	80	53	0	60 (51-69)	117	66 (56-74)
<i>Logan Hospital</i>	<i>54</i>	<i>30</i>	<i>24</i>	<i>0</i>	<i>56 (41-69)</i>	<i>44</i>	<i>66 (50-80)</i>
<i>Princess Alexandra Hospital</i>	<i>72</i>	<i>48</i>	<i>24</i>	<i>0</i>	<i>67 (55-77)</i>	<i>67</i>	<i>70 (58-81)</i>

continued on next page

continued from previous page

Centre	Dialysis Patients	AVF or AVG or PD	Vascular Catheter	Missing Access Data	% of AVF or AVG or PD (95 % CI)	Early Referral	% of Early Referrals with AVF or AVG or PD
<i>Redlands Hospital</i>	7	2	5	0	29 (4-71)	6	17 (0-64)
Morayfield B.Braun Renal Care Centre	1	1	0	0	100 (2-100)	1	100 (2-100)
Nambour Selangor Private Hospital	2	2	0	0	100 (16-100)	1	100 (2-100)
North Lakes Dialysis Centre	10	7	3	0	70 (35-93)	10	70 (35-93)
Pindara Renal Unit	6	4	2	0	67 (22-96)	6	67 (22-96)
Rockhampton Hospital	26	10	16	0	38 (20-59)	18	56 (31-78)
Royal Brisbane and Women's Hospital	73	49	24	0	67 (55-78)	62	77 (65-87)
St Andrew's Ipswich Private Hospital	10	7	3	0	70 (35-93)	10	70 (35-93)
St Andrew's Toowoomba B.Braun's Dialysis Clinic	9	3	6	0	33 (7-70)	5	60 (15-95)
Sunshine Coast University Hospital	31	18	13	0	58 (39-75)	28	64 (44-81)
Sunshine Coast University Private Hospital	4	2	2	0	50 (7-93)	4	50 (7-93)
The Wesley Hospital Brisbane	28	7	21	0	25 (11-45)	22	27 (11-50)
Toowoomba Hospital	28	19	9	0	68 (48-84)	23	78 (56-93)
Torres & Cape Kidney Health	1	1	0	0	100 (2-100)	1	100 (2-100)
Townsville University Hospital	61	21	40	0	34 (23-48)	55	35 (22-49)
New South Wales	934	510	424	0	55 (51-58)	788	60 (56-63)
Bathurst Base Hospital	1	0	1	0	0 (0-98)	1	0 (0-98)
Coffs Harbour Hospital	11	7	4	0	64 (31-89)	11	64 (31-89)
Concord Repatriation General Hospital	38	21	17	0	55 (38-71)	31	65 (45-81)
Dubbo Base Hospital	20	13	7	0	65 (41-85)	16	75 (48-93)
Gosford Hospital	39	17	22	0	44 (28-60)	29	59 (39-76)
Gregory Hills B.Braun Renal Care Centre	4	0	4	0	0 (0-60)	4	0 (0-60)
John Hunter Hospital	68	46	22	0	68 (55-78)	60	73 (60-84)
Lismore Base Hospital	21	14	7	0	67 (43-85)	20	70 (46-88)
Liverpool Private Dialysis Centre	2	1	1	0	50 (1-99)	2	50 (1-99)
Manning Rural Hospital	11	4	7	0	36 (11-69)	7	29 (4-71)
Mater Hospital, North Sydney	5	4	1	0	80 (28-99)	5	80 (28-99)
Mayo Private Hospital	3	1	2	0	33 (1-91)	3	33 (1-91)
Newcastle Dialysis Centre	2	2	0	0	100 (16-100)	2	100 (16-100)
Orange Health Service	17	6	11	0	35 (14-62)	11	55 (23-83)

continued on next page

continued from previous page

Centre	Dialysis Patients	AVF or AVG or PD	Vascular Catheter	Missing Access Data	% of AVF or AVG or PD (95 % CI)	Early Referral	% of Early Referrals with AVF or AVG or PD
Port Macquarie Base Hospital	17	10	7	0	59 (33-82)	14	71 (42-92)
Royal North Shore Hospital	58	37	21	0	64 (50-76)	50	64 (49-77)
Royal Prince Alfred Hospital	41	19	22	0	46 (31-63)	38	47 (31-64)
South West Sydney Renal Service	166	78	88	0	47 (39-55)	163	47 (39-55)
St George Hospital	40	26	14	0	65 (48-79)	33	73 (54-87)
St Vincent's Hospital Sydney	23	7	16	0	30 (13-53)	12	58 (28-85)
St Vincent's Lismore Private Dialysis Centre	5	5	0	0	100 (48-100)	5	100 (48-100)
Sydney Adventist Hospital	6	2	4	0	33 (4-78)	6	33 (4-78)
Tamworth Hospital	27	14	13	0	52 (32-71)	16	69 (41-89)
The Prince of Wales Hospital	18	10	8	0	56 (31-78)	15	67 (38-88)
Tweed Valley Hospital	15	6	9	0	40 (16-68)	14	43 (18-71)
Wagga Wagga Base Hospital	35	16	19	0	46 (29-63)	25	44 (24-65)
Western Sydney Renal Health Services	209	126	83	0	60 (53-67)	166	66 (58-73)
<i>Nepean Hospital</i>	52	26	26	0	50 (36-64)	36	61 (43-77)
<i>Westmead Hospital</i>	157	100	57	0	64 (56-71)	130	67 (58-75)
Wollongong Hospital	32	18	14	0	56 (38-74)	29	62 (42-79)
Australian Capital Territory	75	36	39	0	48 (36-60)	68	51 (39-64)
Access Nephrology	9	4	5	0	44 (14-79)	8	50 (16-84)
Canberra Hospital	66	32	34	0	48 (36-61)	60	52 (38-65)
Victoria	852	506	345	1	59 (56-63)	725	65 (62-69)
Alfred Hospital	69	38	31	0	55 (43-67)	66	56 (43-68)
Austin Hospital	51	24	27	0	47 (33-62)	45	49 (34-64)
Bendigo Hospital	34	17	17	0	50 (32-68)	28	61 (41-78)
Diamond Valley B.Braun Renal Care Centre	3	3	0	0	100 (29-100)	1	100 (2-100)
Eastern Health Integrated Renal Services	57	36	21	0	63 (49-76)	52	69 (55-81)
Epworth Eastern Hospital	10	8	2	0	80 (44-97)	10	80 (44-97)
Epworth Richmond Hospital	14	6	8	0	43 (18-71)	12	42 (15-72)
Forest Hill Dialysis Centre	2	2	0	0	100 (16-100)	2	100 (16-100)
Malvern Dialysis Centre	15	9	6	0	60 (32-84)	8	88 (47-100)

continued on next page

continued from previous page

Centre	Dialysis Patients	AVF or AVG or PD	Vascular Catheter	Missing Access Data	% of AVF or AVG or PD (95 % CI)	Early Referral	% of Early Referrals with AVF or AVG or PD
Monash Medical Centre	185	126	59	0	68 (61-75)	164	73 (65-79)
Northern Health Service Melbourne	60	39	21	0	65 (52-77)	48	73 (58-85)
Peninsula Health Renal Services	16	6	10	0	38 (15-65)	16	38 (15-65)
South Eastern Private Hospital Dialysis Centre	4	1	3	0	25 (1-81)	0	–
St Vincent's Hospital Melbourne	62	41	21	0	66 (53-78)	45	82 (68-92)
Sunshine Private Dialysis Centre Fresenius	2	2	0	0	100 (16-100)	0	–
The Royal Melbourne Hospital	124	78	46	0	63 (54-71)	102	73 (63-81)
University Hospital Geelong Barwon Health	39	18	20	1	47 (31-64)	34	53 (35-70)
Western Health Service	105	52	53	0	50 (40-59)	92	54 (44-65)
Tasmania	62	43	19	0	69 (56-80)	58	69 (55-80)
Launceston General Hospital	28	18	10	0	64 (44-81)	26	65 (44-83)
Royal Hobart Hospital	34	25	9	0	74 (56-87)	32	72 (53-86)
South Australia	231	131	100	0	57 (50-63)	205	63 (56-70)
Central Northern Adelaide Renal Service	177	98	79	0	55 (48-63)	159	60 (52-68)
Flinders Medical Centre	54	33	21	0	61 (47-74)	46	72 (57-84)
Northern Territory	110	40	69	1	37 (28-46)	105	38 (29-48)
Alice Springs Hospital	51	11	40	0	22 (11-35)	50	22 (12-36)
Royal Darwin Hospital	59	29	29	1	50 (37-63)	55	53 (39-66)
Western Australia	376	184	192	0	49 (44-54)	297	56 (50-62)
Fiona Stanley Hospital	140	62	78	0	44 (36-53)	98	53 (43-63)
Royal Perth Hospital	141	69	72	0	49 (40-57)	123	54 (45-63)
Sir Charles Gairdner Hospital	95	53	42	0	56 (45-66)	76	63 (51-74)
New Zealand	723	298	425	0	41 (38-45)	610	46 (42-50)
Auckland City Hospital	82	25	57	0	30 (21-42)	72	35 (24-47)
Bay of Plenty Renal Unit	2	2	0	0	100 (16-100)	1	100 (2-100)
Christchurch Hospital	36	23	13	0	64 (46-79)	34	65 (46-80)

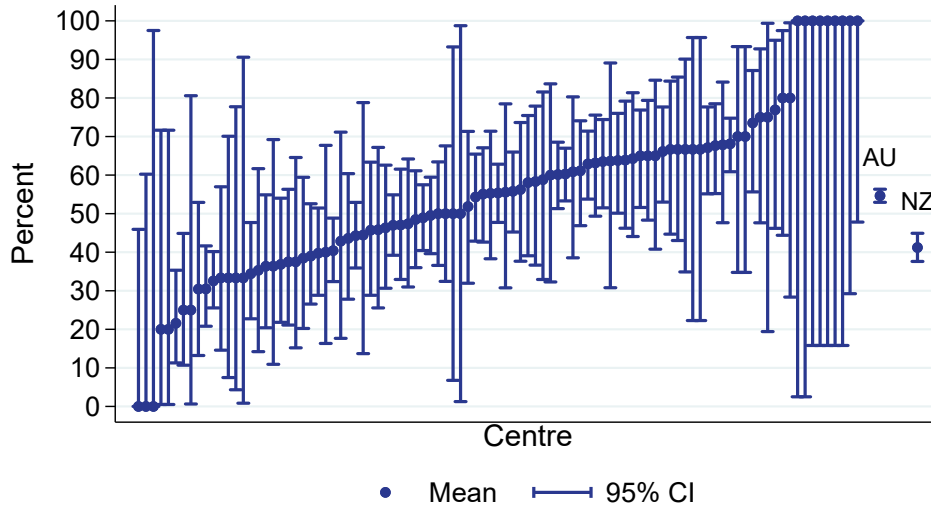
continued on next page

continued from previous page

Centre	Dialysis Patients	AVF or AVG or PD	Vascular Catheter	Missing Access Data	% of AVF or AVG or PD (95 % CI)	Early Referral	% of Early Referrals with AVF or AVG or PD
Dunedin Hospital	24	16	8	0	67 (45-84)	20	75 (51-91)
Hawkes Bay Hospital	21	7	14	0	33 (15-57)	19	37 (16-62)
Middlemore Hospital	169	55	114	0	33 (26-40)	139	37 (29-45)
Palmerston North Hospital	33	12	21	0	36 (20-55)	23	43 (23-66)
Taranaki Hospital	13	10	3	0	77 (46-95)	13	77 (46-95)
Waikato Hospital	146	59	87	0	40 (32-49)	123	47 (38-56)
Waitemata Renal Service	78	31	47	0	40 (29-51)	66	42 (30-55)
Wellington Regional Hospital	81	44	37	0	54 (43-65)	73	58 (45-69)
Whangarei Hospital	38	14	24	0	37 (22-54)	27	41 (22-61)

All dialysis access planning (AVF/AVG or PD)
 % of all dialysis starts, Adults

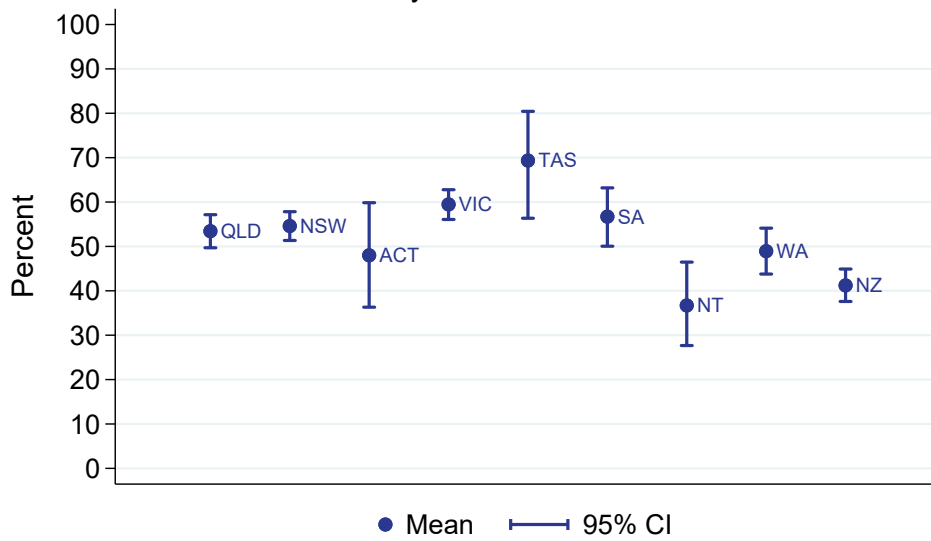
01 January 2024 - 31 December 2024



All adult dialysis starts including late referred patients

All dialysis access planning (AVF/AVG or PD)
 % of all dialysis starts, Adults

By Jurisdiction, 2024



2.1.2 Paediatric

This table presents the numbers of patients beginning haemodialysis or peritoneal dialysis and the percentage starting with a permanent access (an AVF or AVG for haemodialysis and all peritoneal dialysis patients) during the observation window by Centre, where dialysis was the first kidney replacement therapy. Patients are included in this paediatric report if they were treated at a paediatric hospital. In rare cases when patients younger than 18 years are treated at an adult centre, they are included in the adult report. Any patients 18 years and older treated at a paediatric hospital are included in this report. Finally, the total of Early Referrals (patients seen more than 3 months before first treatment) and the percentage of Early Referrals with a permanent access are also presented.

Centre	Dialysis Patients	AVF or AVG or PD	Vascular Catheter	Missing Access Data	% of AVF or AVG or PD (95 % CI)	Early Referral	% of Early Referrals with AVF or AVG or PD
Australia	33	21	12	0	64 (45-80)	26	58 (37-77)
Queensland	8	7	1	0	88 (47-100)	6	83 (36-100)
Child and Adolescent Renal Service	8	7	1	0	88 (47-100)	6	83 (36-100)
New South Wales	6	2	4	0	33 (4-78)	5	40 (5-85)
Sydney Children's Hospital	2	2	0	0	100 (16-100)	2	100 (16-100)
The Children's Hospital at Westmead	4	0	4	0	0 (0-60)	3	0 (0-71)
Victoria	15	9	6	0	60 (32-84)	11	45 (17-77)
Monash Children's Centre	5	3	2	0	60 (15-95)	4	50 (7-93)
Royal Children's Hospital	10	6	4	0	60 (26-88)	7	43 (10-82)
South Australia	3	3	0	0	100 (29-100)	3	100 (29-100)
Women's and Children's Hospital	3	3	0	0	100 (29-100)	3	100 (29-100)
Western Australia	1	0	1	0	0 (0-98)	1	0 (0-98)
Perth Children's Hospital	1	0	1	0	0 (0-98)	1	0 (0-98)
New Zealand	3	3	0	0	100 (29-100)	2	100 (16-100)
Starship Children's Hospital	3	3	0	0	100 (29-100)	2	100 (16-100)

2.2 Vascular Access at First Haemodialysis

2.2.1 Adult

This table presents the numbers of patients beginning haemodialysis and the percentage starting with an AVF or AVG during the observation window by Centre, where HD was the first kidney replacement therapy. Patients are excluded from this adult report if they were treated at a paediatric hospital. In rare cases when patients younger than 18 years are treated at an adult centre, they are included in this adult report. Any patients 18 years and older treated at a paediatric hospital are excluded from this report. Some Centres did not report type of first access for all new HD patients. The percent beginning with AVF or AVG is based on the number of patients with data available for first access. Finally, the total of Early Referrals (patients seen more than 3 months before first treatment) and the percentage of Early Referrals with AVF or AVG are also presented.

Centre	HD Patients	AVF or AVG	Vascular Catheter	Missing Access Data	% of AVF or AVG (95 % CI)	Early Referral	% of Early Referrals with AVF or AVG
Australia	2483	961	1520	2	39 (37-41)	2047	45 (43-47)
Queensland	548	216	332	0	39 (35-44)	452	47 (42-51)
Bundaberg Hospital	20	11	9	0	55 (32-77)	17	65 (38-86)
Cairns Hospital	64	37	27	0	58 (45-70)	54	69 (54-80)
Cairns Private Hospital	4	3	1	0	75 (19-99)	4	75 (19-99)
Chermside Dialysis Centre	6	4	2	0	67 (22-96)	6	67 (22-96)
Gold Coast Private Hospital	6	0	6	0	0 (0-46)	0	-
Gold Coast University Hospital	48	12	36	0	25 (14-40)	37	30 (16-47)
Henry Dalziel Dialysis Clinic - Greenslopes	24	14	10	0	58 (37-78)	23	61 (39-80)
Hervey Bay Hospital	17	4	13	0	24 (7-50)	13	31 (9-61)
Ipswich Hospital	23	3	20	0	13 (3-34)	19	16 (3-40)
John Flynn Private Hospital	5	1	4	0	20 (1-72)	5	20 (1-72)
Mackay Base Hospital	13	9	4	0	69 (39-91)	13	69 (39-91)
Mater Hospital, Brisbane	12	8	4	0	67 (35-90)	10	80 (44-97)
Mater Hospital, Townsville	5	1	4	0	20 (1-72)	5	20 (1-72)
Metro South Kidney and Transplant Services	79	26	53	0	33 (23-44)	65	38 (27-51)
<i>Logan Hospital</i>	31	7	24	0	23 (10-41)	22	32 (14-55)
<i>Princess Alexandra Hospital</i>	41	17	24	0	41 (26-58)	37	46 (29-63)
<i>Redlands Hospital</i>	7	2	5	0	29 (4-71)	6	17 (0-64)
Morayfield B.Braun Renal Care Centre	1	1	0	0	100 (2-100)	1	100 (2-100)
Nambour Selangor Private Hospital	2	2	0	0	100 (16-100)	1	100 (2-100)
North Lakes Dialysis Centre	10	7	3	0	70 (35-93)	10	70 (35-93)

continued on next page

continued from previous page

Centre	HD Patients	AVF or AVG	Vascular Catheter	Missing Access Data	% of AVF or AVG (95 % CI)	Early Referral	% of Early Referrals with AVF or AVG
Pindara Renal Unit	6	4	2	0	67 (22-96)	6	67 (22-96)
Rockhampton Hospital	19	3	16	0	16 (3-40)	11	27 (6-61)
Royal Brisbane and Women's Hospital	44	20	24	0	45 (30-61)	34	59 (41-75)
St Andrew's Ipswich Private Hospital	10	7	3	0	70 (35-93)	10	70 (35-93)
St Andrew's Toowoomba B.Braun's Dialysis Clinic	9	3	6	0	33 (7-70)	5	60 (15-95)
Sunshine Coast University Hospital	22	9	13	0	41 (21-64)	19	47 (24-71)
Sunshine Coast University Private Hospital	4	2	2	0	50 (7-93)	4	50 (7-93)
The Wesley Hospital Brisbane	28	7	21	0	25 (11-45)	22	27 (11-50)
Toowoomba Hospital	17	8	9	0	47 (23-72)	13	62 (32-86)
Torres & Cape Kidney Health	1	1	0	0	100 (2-100)	1	100 (2-100)
Townsville University Hospital	49	9	40	0	18 (9-32)	44	18 (8-33)
New South Wales	675	251	424	0	37 (34-41)	550	42 (38-46)
Bathurst Base Hospital	1	0	1	0	0 (0-98)	1	0 (0-98)
Coffs Harbour Hospital	10	6	4	0	60 (26-88)	10	60 (26-88)
Concord Repatriation General Hospital	28	11	17	0	39 (22-59)	22	50 (28-72)
Dubbo Base Hospital	17	10	7	0	59 (33-82)	14	71 (42-92)
Gosford Hospital	33	11	22	0	33 (18-52)	23	48 (27-69)
Gregory Hills B.Braun Renal Care Centre	4	0	4	0	0 (0-60)	4	0 (0-60)
John Hunter Hospital	47	25	22	0	53 (38-68)	40	60 (43-75)
Lismore Base Hospital	20	13	7	0	65 (41-85)	19	68 (43-87)
Liverpool Private Dialysis Centre	2	1	1	0	50 (1-99)	2	50 (1-99)
Manning Rural Hospital	9	2	7	0	22 (3-60)	6	17 (0-64)
Mater Hospital, North Sydney	5	4	1	0	80 (28-99)	5	80 (28-99)
Mayo Private Hospital	3	1	2	0	33 (1-91)	3	33 (1-91)
Newcastle Dialysis Centre	2	2	0	0	100 (16-100)	2	100 (16-100)
Orange Health Service	16	5	11	0	31 (11-59)	10	50 (19-81)
Port Macquarie Base Hospital	17	10	7	0	59 (33-82)	14	71 (42-92)
Royal North Shore Hospital	41	20	21	0	49 (33-65)	38	53 (36-69)
Royal Prince Alfred Hospital	35	13	22	0	37 (21-55)	32	38 (21-56)
South West Sydney Renal Service	104	16	88	0	15 (9-24)	102	16 (9-24)
St George Hospital	25	11	14	0	44 (24-65)	20	55 (32-77)

continued on next page

continued from previous page

Centre	HD Patients	AVF or AVG	Vascular Catheter	Missing Access Data	% of AVF or AVG (95 % CI)	Early Referral	% of Early Referrals with AVF or AVG
St Vincent's Hospital Sydney	21	5	16	0	24 (8-47)	10	50 (19-81)
St Vincent's Lismore Private Dialysis Centre	5	5	0	0	100 (48-100)	5	100 (48-100)
Sydney Adventist Hospital	6	2	4	0	33 (4-78)	6	33 (4-78)
Tamworth Hospital	21	8	13	0	38 (18-62)	10	50 (19-81)
The Prince of Wales Hospital	10	2	8	0	20 (3-56)	7	29 (4-71)
Tweed Valley Hospital	11	2	9	0	18 (2-52)	10	20 (3-56)
Wagga Wagga Base Hospital	31	12	19	0	39 (22-58)	21	33 (15-57)
Western Sydney Renal Health Services	129	46	83	0	36 (27-45)	95	40 (30-51)
<i>Nepean Hospital</i>	42	16	26	0	38 (24-54)	28	50 (31-69)
<i>Westmead Hospital</i>	87	30	57	0	34 (25-45)	67	36 (24-48)
Wollongong Hospital	22	8	14	0	36 (17-59)	19	42 (20-67)
Australian Capital Territory	60	21	39	0	35 (23-48)	54	39 (26-53)
Access Nephrology	9	4	5	0	44 (14-79)	8	50 (16-84)
Canberra Hospital	51	17	34	0	33 (21-48)	46	37 (23-52)
Victoria	605	259	345	1	43 (39-47)	498	50 (45-54)
Alfred Hospital	42	11	31	0	26 (14-42)	40	28 (15-44)
Austin Hospital	42	15	27	0	36 (22-52)	38	39 (24-57)
Bendigo Hospital	19	2	17	0	11 (1-33)	13	15 (2-45)
Diamond Valley B.Braun Renal Care Centre	3	3	0	0	100 (29-100)	1	100 (2-100)
Eastern Health Integrated Renal Services	41	20	21	0	49 (33-65)	36	56 (38-72)
Epworth Eastern Hospital	10	8	2	0	80 (44-97)	10	80 (44-97)
Epworth Richmond Hospital	14	6	8	0	43 (18-71)	12	42 (15-72)
Forest Hill Dialysis Centre	2	2	0	0	100 (16-100)	2	100 (16-100)
Malvern Dialysis Centre	15	9	6	0	60 (32-84)	8	88 (47-100)
Monash Medical Centre	128	69	59	0	54 (45-63)	114	61 (51-70)
Northern Health Service Melbourne	47	26	21	0	55 (40-70)	38	66 (49-80)
Peninsula Health Renal Services	16	6	10	0	38 (15-65)	16	38 (15-65)
South Eastern Private Hospital Dialysis Centre	4	1	3	0	25 (1-81)	0	-
St Vincent's Hospital Melbourne	30	9	21	0	30 (15-49)	15	47 (21-73)
Sunshine Private Dialysis Centre Fresenius	2	2	0	0	100 (16-100)	0	-

continued on next page

continued from previous page

Centre	HD Patients	AVF or AVG	Vascular Catheter	Missing Access Data	% of AVF or AVG (95 % CI)	Early Referral	% of Early Referrals with AVF or AVG
The Royal Melbourne Hospital	84	38	46	0	45 (34-56)	66	58 (45-70)
University Hospital Geelong Barwon Health	29	8	20	1	29 (13-49)	24	33 (16-55)
Western Health Service	77	24	53	0	31 (21-43)	65	35 (24-48)
Tasmania	46	27	19	0	59 (43-73)	43	58 (42-73)
Launceston General Hospital	18	8	10	0	44 (22-69)	17	47 (23-72)
Royal Hobart Hospital	28	19	9	0	68 (48-84)	26	65 (44-83)
South Australia	177	77	100	0	44 (36-51)	152	50 (42-58)
Central Northern Adelaide Renal Service	135	56	79	0	41 (33-50)	118	47 (37-56)
Flinders Medical Centre	42	21	21	0	50 (34-66)	34	62 (44-78)
Northern Territory	101	31	69	1	31 (22-41)	96	32 (23-43)
Alice Springs Hospital	51	11	40	0	22 (11-35)	50	22 (12-36)
Royal Darwin Hospital	50	20	29	1	41 (27-56)	46	43 (29-59)
Western Australia	271	79	192	0	29 (24-35)	202	36 (29-43)
Fiona Stanley Hospital	104	26	78	0	25 (17-34)	67	31 (21-44)
Royal Perth Hospital	107	35	72	0	33 (24-42)	90	38 (28-49)
Sir Charles Gairdner Hospital	60	18	42	0	30 (19-43)	45	38 (24-53)
New Zealand	511	86	425	0	17 (14-20)	412	20 (16-24)
Auckland City Hospital	64	7	57	0	11 (5-21)	54	13 (5-25)
Bay of Plenty Renal Unit	1	1	0	0	100 (2-100)	1	100 (2-100)
Christchurch Hospital	17	4	13	0	24 (7-50)	16	25 (7-52)
Dunedin Hospital	17	9	8	0	53 (28-77)	14	64 (35-87)
Hawkes Bay Hospital	17	3	14	0	18 (4-43)	15	20 (4-48)
Middlemore Hospital	132	18	114	0	14 (8-21)	106	17 (10-26)
Palmerston North Hospital	29	8	21	0	28 (13-47)	20	35 (15-59)
Taranaki Hospital	5	2	3	0	40 (5-85)	5	40 (5-85)
Waikato Hospital	99	12	87	0	12 (6-20)	77	16 (8-26)
Waitemata Renal Service	58	11	47	0	19 (10-31)	47	19 (9-33)

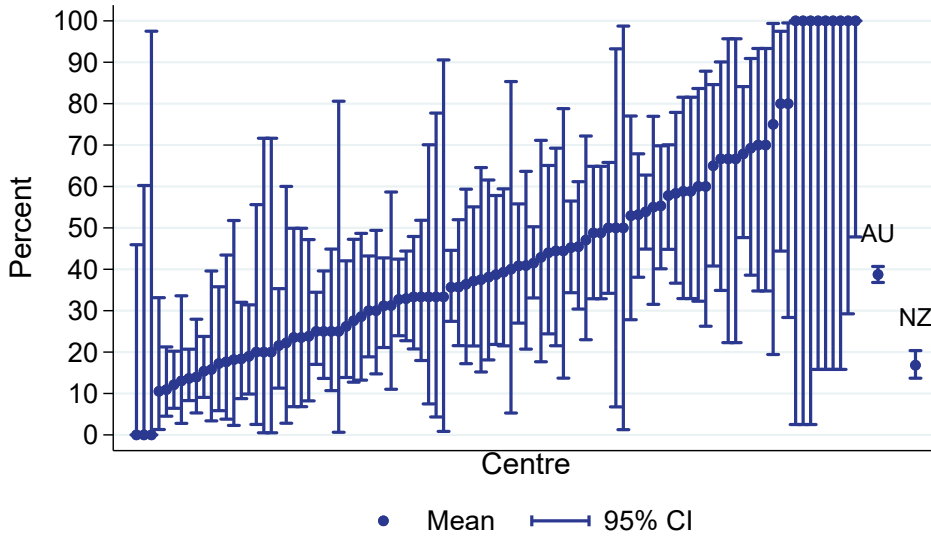
continued on next page

continued from previous page

Centre	HD Patients	AVF or AVG	Vascular Catheter	Missing Access Data	% of AVF or AVG (95 % CI)	Early Referral	% of Early Referrals with AVF or AVG
Wellington Regional Hospital	43	6	37	0	14 (5-28)	37	16 (6-32)
Whangarei Hospital	29	5	24	0	17 (6-36)	20	20 (6-44)

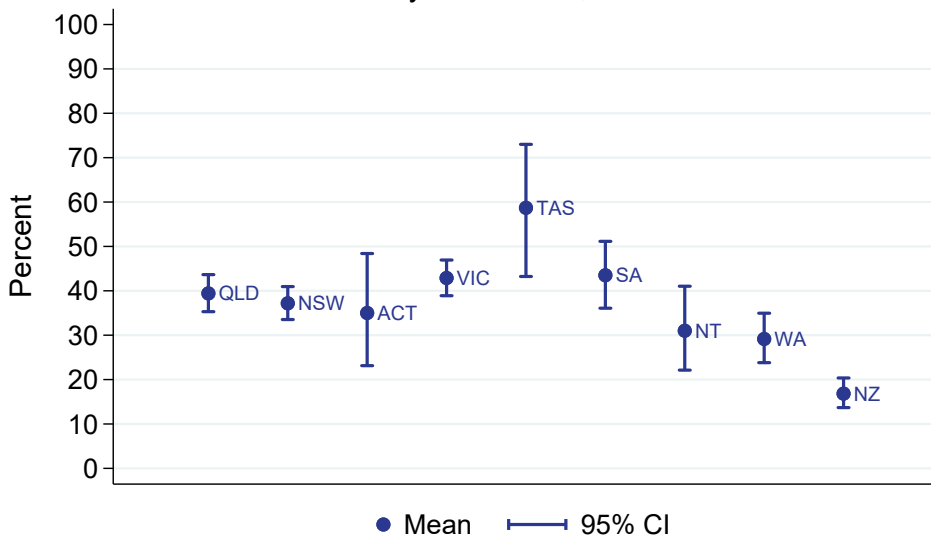
Vascular access at first HD (AVF/AVG)
% of all HD starts, Adults

01 January 2024 - 31 December 2024



Vascular access at first HD (AVF/AVG)
% of all HD starts, Adults

By Jurisdiction, 2024



2.2.2 Paediatric

This table presents the numbers of patients beginning haemodialysis and the percentage starting with an AVF or AVG during the observation window by Centre, where HD was the first kidney replacement therapy. Patients are included in this paediatric report if they were treated at a paediatric hospital. In rare cases when patients younger than 18 years are treated at an adult centre, they are included in the adult report. Any patients 18 years and older treated at a paediatric hospital are included in this report. Some Centres did not report type of first access for all new HD patients. The percent beginning with AVF or AVG is based on the number of patients with data available for first access. Finally, the total of Early Referrals (patients seen more than 3 months before first treatment) and the percentage of Early Referrals with AVF or AVG are also presented.

Centre	HD Patients	AVF or AVG	Vascular Catheter	Missing Access Data	% of AVF or AVG (95 % CI)	Early Referral	% of Early Referrals with AVF or AVG
Australia	12	0	12	0	0 (0-26)	11	0 (0-28)
Queensland Child and Adolescent Renal Service	1 1	0 0	1 1	0 0	0 (0-98) 0 (0-98)	1 1	0 (0-98) 0 (0-98)
New South Wales The Children's Hospital at Westmead	4 4	0 0	4 4	0 0	0 (0-98) 0 (0-60)	3 3	0 (0-71) 0 (0-71)
Victoria Monash Children's Centre Royal Children's Hospital	6 2 4	0 0 0	6 2 4	0 0 0	0 (0-98) 0 (0-84) 0 (0-60)	6 2 4	0 (0-46) 0 (0-84) 0 (0-60)
Western Australia Perth Children's Hospital	1 1	0 0	1 1	0 0	0 (0-98) 0 (0-98)	1 1	0 (0-98) 0 (0-98)

2.3 HD Vascular Access Planning

2.3.1 Adult

This table presents the numbers of patients on haemodialysis at day 90 and the percentage starting haemodialysis with a permanent vascular access (an AVF or AVG) during the observation window by Centre. Modality changes of less than 30 days are ignored for the determination of modality at day 90. Patients are excluded from this adult report if they were treated at a paediatric hospital. In rare cases when patients younger than 18 years are treated at an adult centre, they are included in this adult report. Any patients 18 years and older treated at a paediatric hospital are excluded from this report. Some Centres did not report type of first access for all new HD patients. The percent beginning with a permanent access is based on the number of patients with data available for first access. Finally, the total of Early Referrals (patients seen more than 3 months before first treatment) and the percentage of Early Referrals with a permanent access are also presented.

Centre	HD Patients	AVF or AVG	Vascular Catheter	Missing Access Data	% of AVF or AVG (95 % CI)	Early Referral	% of Early Referrals with AVF or AVG
Australia	2288	916	1369	3	40 (38-42)	1874	46 (44-49)
Queensland	515	209	306	0	41 (36-45)	435	47 (42-52)
Bundaberg Hospital	12	5	7	0	42 (15-72)	9	56 (21-86)
Cairns Hospital	60	31	29	0	52 (38-65)	52	60 (45-73)
Cairns Private Hospital	4	3	1	0	75 (19-99)	4	75 (19-99)
Chermside Dialysis Centre	8	6	2	0	75 (35-97)	7	86 (42-100)
Gold Coast Private Hospital	3	0	3	0	0 (0-71)	0	–
Gold Coast University Hospital	41	13	28	0	32 (18-48)	33	39 (23-58)
Henry Dalziel Dialysis Clinic - Greenslopes	22	15	7	0	68 (45-86)	21	71 (48-89)
Hervey Bay Hospital	13	4	9	0	31 (9-61)	10	40 (12-74)
Ipswich Hospital	21	4	17	0	19 (5-42)	17	24 (7-50)
John Flynn Private Hospital	4	0	4	0	0 (0-60)	4	0 (0-60)
Mackay Base Hospital	12	9	3	0	75 (43-95)	12	75 (43-95)
Mater Hospital, Brisbane	12	6	6	0	50 (21-79)	9	67 (30-93)
Mater Hospital, Townsville	5	2	3	0	40 (5-85)	4	50 (7-93)
Metro South Kidney and Transplant Services	82	27	55	0	33 (23-44)	71	37 (25-49)
<i>Logan Hospital</i>	23	5	18	0	22 (7-44)	16	31 (11-59)
<i>Princess Alexandra Hospital</i>	54	20	34	0	37 (24-51)	51	39 (26-54)
<i>Redlands Hospital</i>	5	2	3	0	40 (5-85)	4	25 (1-81)
Nambour Selangor Private Hospital	3	2	1	0	67 (9-99)	2	50 (1-99)
North Lakes Dialysis Centre	12	7	5	0	58 (28-85)	12	58 (28-85)

continued on next page

continued from previous page

Centre	HD Patients	AVF or AVG	Vascular Catheter	Missing Access Data	% of AVF or AVG (95 % CI)	Early Referral	% of Early Referrals with AVF or AVG
Pindara Renal Unit	4	1	3	0	25 (1-81)	4	25 (1-81)
Rockhampton Hospital	17	2	15	0	12 (1-36)	9	22 (3-60)
Royal Brisbane and Women's Hospital	43	20	23	0	47 (31-62)	36	56 (38-72)
St Andrew's Ipswich Private Hospital	11	7	4	0	64 (31-89)	11	64 (31-89)
St Andrew's Toowoomba B.Braun's Dialysis Clinic	8	4	4	0	50 (16-84)	5	80 (28-99)
Sunshine Coast University Hospital	32	13	19	0	41 (24-59)	28	46 (28-66)
Sunshine Coast University Private Hospital	3	1	2	0	33 (1-91)	3	33 (1-91)
The Wesley Hospital Brisbane	23	7	16	0	30 (13-53)	20	30 (12-54)
Toowoomba Hospital	19	10	9	0	53 (29-76)	16	62 (35-85)
Torres & Cape Kidney Health	1	1	0	0	100 (2-100)	1	100 (2-100)
Townsville University Hospital	40	9	31	0	22 (11-38)	35	23 (10-40)
New South Wales	601	234	367	0	39 (35-43)	479	45 (41-50)
Bathurst Base Hospital	1	0	1	0	0 (0-98)	1	0 (0-98)
Coffs Harbour Hospital	14	7	7	0	50 (23-77)	13	54 (25-81)
Concord Repatriation General Hospital	20	9	11	0	45 (23-68)	16	56 (30-80)
Dubbo Base Hospital	16	12	4	0	75 (48-93)	15	80 (52-96)
Gosford Hospital	32	10	22	0	31 (16-50)	22	41 (21-64)
Gregory Hills B.Braun Renal Care Centre	4	0	4	0	0 (0-60)	4	0 (0-60)
John Hunter Hospital	30	17	13	0	57 (37-75)	24	67 (45-84)
Lismore Base Hospital	16	13	3	0	81 (54-96)	16	81 (54-96)
Liverpool Private Dialysis Centre	2	1	1	0	50 (1-99)	2	50 (1-99)
Manning Rural Hospital	10	2	8	0	20 (3-56)	6	17 (0-64)
Mater Hospital, North Sydney	7	5	2	0	71 (29-96)	7	71 (29-96)
Mayo Private Hospital	4	2	2	0	50 (7-93)	3	33 (1-91)
Newcastle Dialysis Centre	3	2	1	0	67 (9-99)	2	100 (16-100)
Orange Health Service	17	6	11	0	35 (14-62)	12	50 (21-79)
Port Macquarie Base Hospital	13	9	4	0	69 (39-91)	11	82 (48-98)
Royal North Shore Hospital	44	16	28	0	36 (22-52)	35	46 (29-63)
Royal Prince Alfred Hospital	34	15	19	0	44 (27-62)	32	44 (26-62)
South West Sydney Renal Service	83	15	68	0	18 (10-28)	81	19 (11-29)
St George Hospital	25	13	12	0	52 (31-72)	19	68 (43-87)

continued on next page

continued from previous page

Centre	HD Patients	AVF or AVG	Vascular Catheter	Missing Access Data	% of AVF or AVG (95 % CI)	Early Referral	% of Early Referrals with AVF or AVG
St Vincent's Hospital Sydney	16	5	11	0	31 (11-59)	9	56 (21-86)
St Vincent's Lismore Private Dialysis Centre	5	5	0	0	100 (48-100)	5	100 (48-100)
Sydney Adventist Hospital	8	2	6	0	25 (3-65)	8	25 (3-65)
Tamworth Hospital	21	5	16	0	24 (8-47)	9	33 (7-70)
The Prince of Wales Hospital	10	3	7	0	30 (7-65)	8	38 (9-76)
Tweed Valley Hospital	10	1	9	0	10 (0-45)	9	11 (0-48)
Wagga Wagga Base Hospital	28	10	18	0	36 (19-56)	16	44 (20-70)
Western Sydney Renal Health Services	105	36	69	0	34 (25-44)	76	39 (28-51)
<i>Nepean Hospital</i>	33	13	20	0	39 (23-58)	21	52 (30-74)
<i>Westmead Hospital</i>	72	23	49	0	32 (21-44)	55	35 (22-49)
Wollongong Hospital	23	13	10	0	57 (34-77)	18	61 (36-83)
Australian Capital Territory	48	21	27	0	44 (29-59)	41	51 (35-67)
Access Nephrology	10	6	4	0	60 (26-88)	9	67 (30-93)
Canberra Hospital	38	15	23	0	39 (24-57)	32	47 (29-65)
Victoria	578	251	326	1	44 (39-48)	471	50 (45-55)
Alfred Hospital	42	14	28	0	33 (20-50)	39	36 (21-53)
Austin Hospital	49	15	34	0	31 (18-45)	45	33 (20-49)
Bendigo Hospital	17	4	13	0	24 (7-50)	13	23 (5-54)
Diamond Valley B.Braun Renal Care Centre	2	2	0	0	100 (16-100)	0	–
Eastern Health Integrated Renal Services	36	16	20	0	44 (28-62)	31	52 (33-70)
Epworth Eastern Hospital	10	10	0	0	100 (69-100)	10	100 (69-100)
Epworth Geelong Hospital	1	1	0	0	100 (2-100)	1	100 (2-100)
Epworth Richmond Hospital	14	3	11	0	21 (5-51)	12	17 (2-48)
Forest Hill Dialysis Centre	3	3	0	0	100 (29-100)	3	100 (29-100)
Malvern Dialysis Centre	15	10	5	0	67 (38-88)	8	100 (63-100)
Monash Medical Centre	120	60	60	0	50 (41-59)	104	58 (48-67)
Northern Health Service Melbourne	42	23	19	0	55 (39-70)	35	63 (45-79)
Peninsula Health Renal Services	12	6	6	0	50 (21-79)	12	50 (21-79)
South Eastern Private Hospital Dialysis Centre	5	2	3	0	40 (5-85)	0	–
St Vincent's Hospital Melbourne	27	7	19	1	27 (12-48)	10	50 (19-81)

continued on next page

continued from previous page

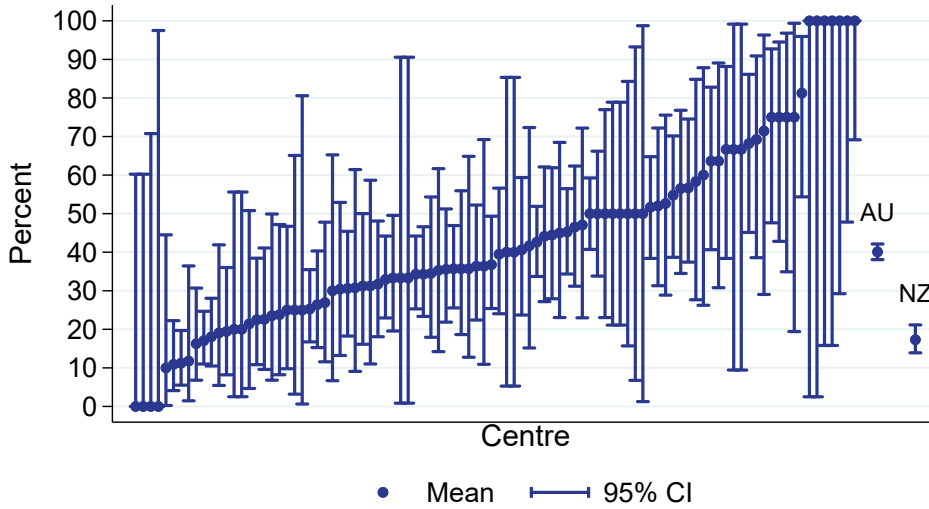
Centre	HD Patients	AVF or AVG	Vascular Catheter	Missing Access Data	% of AVF or AVG (95 % CI)	Early Referral	% of Early Referrals with AVF or AVG
Sunshine Private Dialysis Centre Fresenius	2	2	0	0	100 (16-100)	0	–
The Royal Melbourne Hospital	84	38	46	0	45 (34-56)	70	54 (42-66)
University Hospital Geelong Barwon Health	29	10	19	0	34 (18-54)	24	42 (22-63)
Western Health Service	68	25	43	0	37 (25-49)	54	41 (28-55)
Tasmania	39	22	17	0	56 (40-72)	34	59 (41-75)
Launceston General Hospital	17	8	9	0	47 (23-72)	14	57 (29-82)
Royal Hobart Hospital	22	14	8	0	64 (41-83)	20	60 (36-81)
South Australia	162	72	90	0	44 (37-52)	139	52 (43-60)
Central Northern Adelaide Renal Service	122	52	70	0	43 (34-52)	107	49 (39-58)
Flinders Medical Centre	40	20	20	0	50 (34-66)	32	62 (44-79)
Northern Territory	99	30	68	1	31 (22-41)	93	32 (23-43)
Alice Springs Hospital	53	14	39	0	26 (15-40)	52	27 (16-41)
Royal Darwin Hospital	46	16	29	1	36 (22-51)	41	39 (24-55)
Western Australia	246	77	168	1	31 (26-38)	182	38 (31-46)
Fiona Stanley Hospital	92	23	68	1	25 (17-35)	53	32 (20-46)
Royal Perth Hospital	84	30	54	0	36 (26-47)	75	40 (29-52)
Sir Charles Gairdner Hospital	70	24	46	0	34 (23-47)	54	43 (29-57)
New Zealand	445	77	368	0	17 (14-21)	363	20 (16-24)
Auckland City Hospital	55	6	49	0	11 (4-22)	46	13 (5-26)
Christchurch Hospital	14	5	9	0	36 (13-65)	13	38 (14-68)
Dunedin Hospital	11	4	7	0	36 (11-69)	8	50 (16-84)
Hawkes Bay Hospital	10	2	8	0	20 (3-56)	9	22 (3-60)
Middlemore Hospital	129	22	107	0	17 (11-25)	103	20 (13-29)
Palmerston North Hospital	31	7	24	0	23 (10-41)	25	24 (9-45)
Taranaki Hospital	3	1	2	0	33 (1-91)	3	33 (1-91)
Waikato Hospital	89	10	79	0	11 (6-20)	75	13 (7-23)
Waitemata Renal Service	43	7	36	0	16 (7-31)	31	16 (5-34)

continued on next page

continued from previous page

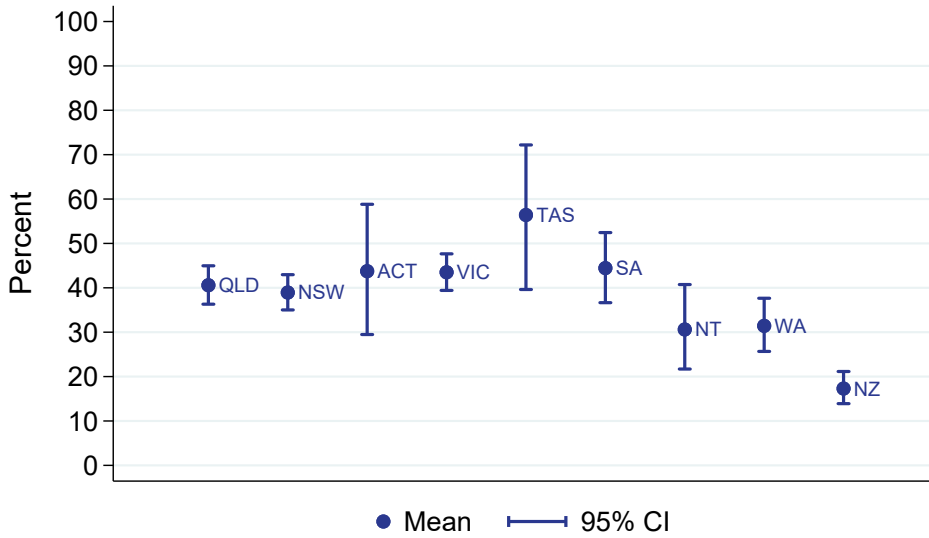
Centre	HD Patients	AVF or AVG	Vascular Catheter	Missing Access Data	% of AVF or AVG (95 % CI)	Early Referral	% of Early Referrals with AVF or AVG
Wellington Regional Hospital	36	7	29	0	19 (8-36)	31	23 (10-41)
Whangarei Hospital	24	6	18	0	25 (10-47)	19	26 (9-51)

HD vascular access planning (AVF/AVG at first HD)
 % of all HD patients at day 90, Adults
 01 January 2024 - 31 December 2024



All HD patients at day 90 including those late referred

HD vascular access planning (AVF/AVG at first HD)
 % of all HD patients at day 90, Adults
 By Jurisdiction, 2024



2.3.2 Paediatric

This table presents the numbers of patients on haemodialysis at day 90 and the percentage starting haemodialysis with a permanent vascular access (an AVF or AVG) during the observation window by Centre. Modality changes of less than 30 days are ignored for the determination of modality at day 90. Patients are included in this paediatric report if they were treated at a paediatric hospital. In rare cases when patients younger than 18 years are treated at an adult centre, they are included in the adult report. Any patients 18 years and older treated at a paediatric hospital are included in this report. Finally, the total of Early Referrals (patients seen more than 3 months before first treatment) and the percentage of Early Referrals with a permanent access are also presented.

Centre	HD Patients	AVF or AVG	Vascular Catheter	Missing Access Data	% of AVF or AVG (95 % CI)	Early Referral	% of Early Referrals with AVF or AVG
Australia	9	0	9	0	0 (0-34)	8	0 (0-37)
Queensland Child and Adolescent Renal Service	1 1	0 0	1 1	0 0	0 (0-98) 0 (0-98)	1 1	0 (0-98) 0 (0-98)
New South Wales The Children's Hospital at Westmead	3 3	0 0	3 3	0 0	0 (0-71) 0 (0-71)	2 2	0 (0-84) 0 (0-84)
Victoria Monash Children's Centre Royal Children's Hospital	4 1 3	0 0 0	4 1 3	0 0 0	0 (0-60) 0 (0-98) 0 (0-71)	4 1 3	0 (0-60) 0 (0-98) 0 (0-71)
Western Australia Perth Children's Hospital	1 1	0 0	1 1	0 0	0 (0-98) 0 (0-98)	1 1	0 (0-98) 0 (0-98)
New Zealand Starship Children's Hospital	1 1	0 0	1 1	0 0	0 (0-98) 0 (0-98)	0 0	- -

2.4 PD Catheter Planning

2.4.1 Adult

This table presents the numbers of patients on peritoneal dialysis at day 90 and the percentage starting kidney replacement therapy (KRT) with peritoneal dialysis during the observation window by Centre. Modality changes of less than 30 days are ignored for the determination of modality at day 90. Patients are excluded from this adult report if they were treated at a paediatric hospital. In rare cases when patients younger than 18 years are treated at an adult centre, they are included in this adult report. Any patients 18 years and older treated at a paediatric hospital are excluded from this report. Finally, the total of Early Referrals (patients seen more than 3 months before first treatment) and the percentage of Early Referrals starting with PD are also presented.

Centre	90-day PD Patients	Started KRT with PD	Did not start KRT with PD	% starting with PD (95 % CI)	Early Referral	% of Early Referrals starting with PD
Australia	902	836	66	93 (91-94)	831	93 (91-95)
Queensland	159	144	15	91 (85-95)	152	91 (86-95)
Bundaberg Hospital	3	3	0	100 (29-100)	2	100 (16-100)
Cairns Hospital	7	5	2	71 (29-96)	7	71 (29-96)
Gold Coast University Hospital	10	9	1	90 (55-100)	10	90 (55-100)
Hervey Bay Hospital	5	5	0	100 (48-100)	5	100 (48-100)
Ipswich Hospital	10	10	0	100 (69-100)	10	100 (69-100)
Mackay Base Hospital	3	2	1	67 (9-99)	3	67 (9-99)
Metro South Kidney and Transplant Services	52	48	4	92 (81-98)	50	94 (83-99)
<i>Logan Hospital</i>	<i>17</i>	<i>16</i>	<i>1</i>	<i>94 (71-100)</i>	<i>15</i>	<i>100 (78-100)</i>
<i>Princess Alexandra Hospital</i>	<i>35</i>	<i>32</i>	<i>3</i>	<i>91 (77-98)</i>	<i>35</i>	<i>91 (77-98)</i>
Rockhampton Hospital	9	9	0	100 (66-100)	9	100 (66-100)
Royal Brisbane and Women's Hospital	26	24	2	92 (75-99)	25	92 (74-99)
Sunshine Coast University Hospital	9	8	1	89 (52-100)	9	89 (52-100)
Toowoomba Hospital	14	13	1	93 (66-100)	12	100 (74-100)
Townsville University Hospital	11	8	3	73 (39-94)	10	70 (35-93)
New South Wales	286	259	27	91 (87-94)	262	91 (87-94)
Coffs Harbour Hospital	1	1	0	100 (2-100)	1	100 (2-100)
Concord Repatriation General Hospital	12	11	1	92 (62-100)	10	100 (69-100)
Dubbo Base Hospital	4	4	0	100 (40-100)	3	100 (29-100)
Gosford Hospital	6	6	0	100 (54-100)	6	100 (54-100)
John Hunter Hospital	22	22	0	100 (85-100)	22	100 (85-100)

continued on next page

continued from previous page

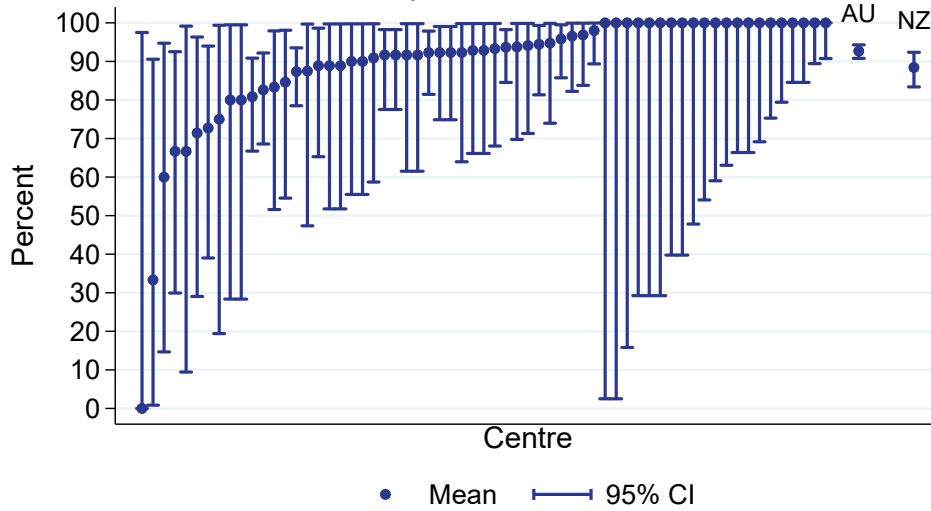
Centre	90-day PD Patients	Started KRT with PD	Did not start KRT with PD	% starting with PD (95 % CI)	Early Referral	% of Early Referrals starting with PD
Lismore Base Hospital	3	3	0	100 (29-100)	3	100 (29-100)
Manning Rural Hospital	3	1	2	33 (1-91)	2	0 (0-84)
Orange Health Service	2	2	0	100 (16-100)	2	100 (16-100)
Port Macquarie Base Hospital	1	0	1	0 (0-98)	1	0 (0-98)
Royal North Shore Hospital	19	18	1	95 (74-100)	14	93 (66-100)
Royal Prince Alfred Hospital	9	8	1	89 (52-100)	9	89 (52-100)
South West Sydney Renal Service	63	59	4	94 (85-98)	62	94 (84-98)
St George Hospital	14	13	1	93 (66-100)	11	91 (59-100)
St Vincent's Hospital Sydney	4	3	1	75 (19-99)	3	67 (9-99)
Tamworth Hospital	4	4	0	100 (40-100)	4	100 (40-100)
The Prince of Wales Hospital	12	11	1	92 (62-100)	12	92 (62-100)
Tweed Valley Hospital	3	3	0	100 (29-100)	3	100 (29-100)
Wagga Wagga Base Hospital	5	4	1	80 (28-99)	5	80 (28-99)
Western Sydney Renal Health Services	87	76	11	87 (79-94)	77	88 (79-95)
<i>Nepean Hospital</i>	12	9	3	75 (43-95)	10	70 (35-93)
<i>Westmead Hospital</i>	75	67	8	89 (80-95)	67	91 (82-97)
Wollongong Hospital	12	10	2	83 (52-98)	12	83 (52-98)
Australian Capital Territory	16	15	1	94 (70-100)	15	93 (68-100)
Canberra Hospital	16	15	1	94 (70-100)	15	93 (68-100)
Victoria	246	231	15	94 (90-97)	221	95 (91-97)
Alfred Hospital	26	24	2	92 (75-99)	25	92 (74-99)
Austin Hospital	8	8	0	100 (63-100)	6	100 (54-100)
Bendigo Hospital	18	16	2	89 (65-99)	18	89 (65-99)
Eastern Health Integrated Renal Services	17	16	1	94 (71-100)	17	94 (71-100)
Monash Medical Centre	50	49	1	98 (89-100)	42	98 (87-100)
Northern Health Service Melbourne	13	12	1	92 (64-100)	12	92 (62-100)
St Vincent's Hospital Melbourne	29	28	1	97 (82-100)	27	100 (87-100)
The Royal Melbourne Hospital	36	34	2	94 (81-99)	28	100 (88-100)
University Hospital Geelong Barwon Health	13	11	2	85 (55-98)	13	85 (55-98)
Western Health Service	36	33	3	92 (78-98)	33	91 (76-98)

continued on next page

continued from previous page

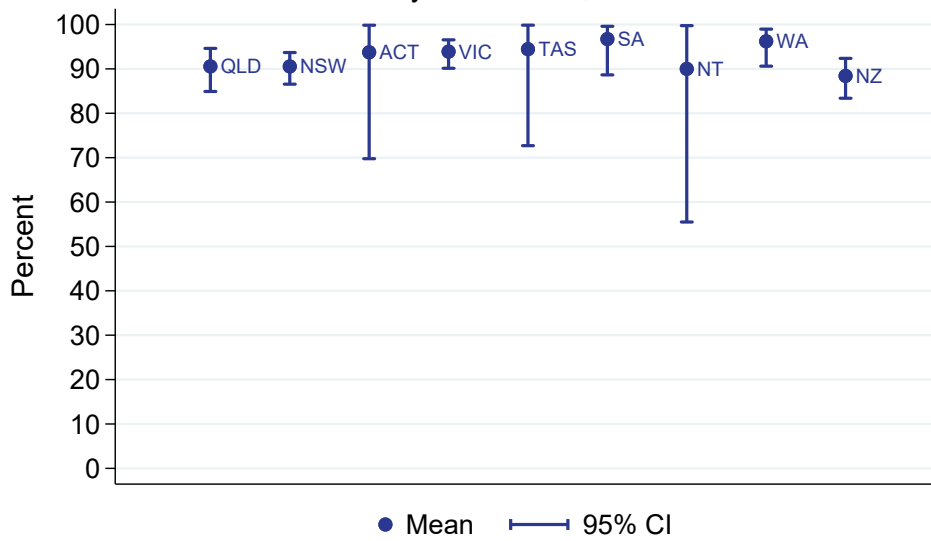
Centre	90-day PD Patients	Started KRT with PD	Did not start KRT with PD	% starting with PD (95 % CI)	Early Referral	% of Early Referrals starting with PD
Tasmania	18	17	1	94 (73-100)	17	94 (71-100)
Launceston General Hospital	11	10	1	91 (59-100)	10	90 (55-100)
Royal Hobart Hospital	7	7	0	100 (59-100)	7	100 (59-100)
South Australia	61	59	2	97 (89-100)	59	97 (88-100)
Central Northern Adelaide Renal Service	48	46	2	96 (86-99)	47	96 (85-99)
Flinders Medical Centre	13	13	0	100 (75-100)	12	100 (74-100)
Northern Territory	10	9	1	90 (55-100)	10	90 (55-100)
Royal Darwin Hospital	10	9	1	90 (55-100)	10	90 (55-100)
Western Australia	106	102	4	96 (91-99)	95	97 (91-99)
Fiona Stanley Hospital	38	38	0	100 (91-100)	32	100 (89-100)
Royal Perth Hospital	36	33	3	92 (78-98)	33	94 (80-99)
Sir Charles Gairdner Hospital	32	31	1	97 (84-100)	30	97 (83-100)
New Zealand	216	191	25	88 (83-92)	203	89 (84-93)
Auckland City Hospital	16	16	0	100 (79-100)	16	100 (79-100)
Bay of Plenty Renal Unit	5	3	2	60 (15-95)	4	50 (7-93)
Christchurch Hospital	15	14	1	93 (68-100)	15	93 (68-100)
Dunedin Hospital	5	4	1	80 (28-99)	4	75 (19-99)
Hawkes Bay Hospital	9	6	3	67 (30-93)	9	67 (30-93)
Middlemore Hospital	47	38	9	81 (67-91)	43	84 (69-93)
Palmerston North Hospital	1	1	0	100 (2-100)	1	100 (2-100)
Taranaki Hospital	8	7	1	88 (47-100)	8	88 (47-100)
Waikato Hospital	46	38	8	83 (69-92)	44	84 (70-93)
Waitemata Renal Service	22	22	0	100 (85-100)	21	100 (84-100)
Wellington Regional Hospital	33	33	0	100 (89-100)	31	100 (89-100)
Whangarei Hospital	9	9	0	100 (66-100)	7	100 (59-100)

PD catheter planning (PD at start)
 % of all PD patients at day 90, Adults
 01 January 2024 - 31 December 2024



All PD patients at day 90 including those late referred

PD catheter planning (PD at start)
 % of all PD patients at day 90, Adults
 By Jurisdiction, 2024



2.4.2 Paediatric

This table presents the numbers of patients on peritoneal dialysis at day 90 and the percentage starting kidney replacement therapy (KRT) with peritoneal dialysis during the observation window by Centre. Modality changes of less than 30 days are ignored for the determination of modality at day 90. Patients are included in this paediatric report if they were treated at a paediatric hospital. In rare cases when patients younger than 18 years are treated at an adult centre, they are included in the adult report. Any patients 18 years and older treated at a paediatric hospital are included in this report. Finally, the total of Early Referrals (patients seen more than 3 months before first treatment) and the percentage of Early Referrals starting with PD are also presented.

Centre	90-day PD Patients	Started KRT with PD	Did not start KRT with PD	% starting with PD (95 % CI)	Early Referral	% of Early Referrals starting with PD
Australia	18	17	1	94 (73-100)	13	100 (75-100)
Queensland	9	9	0	100 (66-100)	7	100 (59-100)
Child and Adolescent Renal Service	9	9	0	100 (66-100)	7	100 (59-100)
New South Wales	3	2	1	67 (9-99)	2	100 (16-100)
Sydney Children's Hospital	2	2	0	100 (16-100)	2	100 (16-100)
The Children's Hospital at Westmead	1	0	1	0 (0-98)	0	-
Victoria	5	5	0	100 (48-100)	3	100 (29-100)
Monash Children's Centre	2	2	0	100 (16-100)	1	100 (2-100)
Royal Children's Hospital	3	3	0	100 (29-100)	2	100 (16-100)
South Australia	1	1	0	100 (2-100)	1	100 (2-100)
Women's and Children's Hospital	1	1	0	100 (2-100)	1	100 (2-100)
New Zealand	3	3	0	100 (29-100)	3	100 (29-100)
Starship Children's Hospital	3	3	0	100 (29-100)	3	100 (29-100)

3 Transplantation Wait Listing

3.1 Adult

This table presents the numbers of patients aged <65 years who have received kidney replacement therapy (KRT) for 6 months, and the percentage who are transplanted or on the wait list within 6 months of KRT start during the observation window by Centre. The 6 month follow-up time means these patients commenced KRT between Jul 2023 and Jun 2024. Patients are excluded from this adult report if they were treated at a paediatric hospital. In rare cases when patients younger than 18 years are treated at an adult centre, they are included in this adult report. Any patients 18 years and older treated at a paediatric hospital are excluded from this report. This quality indicator is presented for Australia only as New Zealand transplant wait listing data is not currently available to ANZDATA.

Centre	Patients	Transplanted or on wait list within 6 months	Neither transplanted nor on wait list	% transplanted or on wait list within 6 months (95 % CI)
Australia	1843	275	1568	15 (13-17)
Queensland	404	45	359	11 (8-15)
Bundaberg Hospital	6	0	6	0 (0-46)
Cairns Hospital	38	1	37	3 (0-14)
Cairns Private Hospital	1	1	0	100 (2-100)
Chermside Dialysis Centre	4	2	2	50 (7-93)
Gold Coast Private Hospital	1	0	1	0 (0-98)
Gold Coast University Hospital	27	4	23	15 (4-34)
Henry Dalziel Dialysis Clinic - Greenslopes	8	1	7	12 (0-53)
Hervey Bay Hospital	6	0	6	0 (0-46)
Ipswich Hospital	25	0	25	0 (0-14)
John Flynn Private Hospital	1	0	1	0 (0-98)
Mackay Base Hospital	13	1	12	8 (0-36)
Mater Hospital, Brisbane	8	2	6	25 (3-65)
Mater Hospital, Townsville	2	0	2	0 (0-84)
Metro South Kidney and Transplant Services	95	10	85	11 (5-19)
<i>Logan Hospital</i>	<i>15</i>	<i>0</i>	<i>15</i>	<i>0 (0-22)</i>
<i>Princess Alexandra Hospital</i>	<i>78</i>	<i>9</i>	<i>69</i>	<i>12 (5-21)</i>
<i>Redlands Hospital</i>	<i>2</i>	<i>1</i>	<i>1</i>	<i>50 (1-99)</i>
Nambour Selangor Private Hospital	1	0	1	0 (0-98)
North Lakes Dialysis Centre	3	1	2	33 (1-91)

continued on next page

continued from previous page

Centre	Patients	Transplanted or on wait list within 6 months	Neither transplanted nor on wait list	% transplanted or on wait list within 6 months (95 % CI)
Queensland Kidney Transplant Service	1	1	0	100 (2-100)
Rockhampton Hospital	18	0	18	0 (0-19)
Royal Brisbane and Women's Hospital	48	10	38	21 (10-35)
St Andrew's Ipswich Private Hospital	1	0	1	0 (0-98)
St Andrew's Toowoomba B.Braun's Dialysis Clinic	1	0	1	0 (0-98)
Sunshine Coast University Hospital	21	6	15	29 (11-52)
Sunshine Coast University Private Hospital	2	1	1	50 (1-99)
The Wesley Hospital Brisbane	8	0	8	0 (0-37)
Toowoomba Hospital	21	1	20	5 (0-24)
Torres & Cape Kidney Health	1	1	0	100 (2-100)
Townsville University Hospital	43	2	41	5 (1-16)
New South Wales	475	67	408	14 (11-18)
Bathurst Base Hospital	2	0	2	0 (0-84)
Coffs Harbour Hospital	9	2	7	22 (3-60)
Concord Repatriation General Hospital	15	2	13	13 (2-40)
Dubbo Base Hospital	15	4	11	27 (8-55)
Gosford Hospital	12	2	10	17 (2-48)
John Hunter Hospital	26	4	22	15 (4-35)
Lismore Base Hospital	11	3	8	27 (6-61)
Liverpool Private Dialysis Centre	1	0	1	0 (0-98)
Manning Rural Hospital	8	0	8	0 (0-37)
Mater Hospital, North Sydney	2	0	2	0 (0-84)
Newcastle Dialysis Centre	1	0	1	0 (0-98)
Orange Health Service	12	2	10	17 (2-48)
Port Macquarie Base Hospital	7	1	6	14 (0-58)
Royal North Shore Hospital	37	6	31	16 (6-32)
Royal Prince Alfred Hospital	22	8	14	36 (17-59)
South West Sydney Renal Service	82	6	76	7 (3-15)
St George Hospital	30	9	21	30 (15-49)
St Vincent's Hospital Sydney	14	5	9	36 (13-65)
Tamworth Hospital	11	1	10	9 (0-41)

continued on next page

continued from previous page

Centre	Patients	Transplanted or on wait list within 6 months	Neither transplanted nor on wait list	% transplanted or on wait list within 6 months (95 % CI)
The Prince of Wales Hospital	11	2	9	18 (2-52)
Tweed Valley Hospital	8	0	8	0 (0-37)
Wagga Wagga Base Hospital	11	0	11	0 (0-28)
Western Sydney Renal Health Services	113	7	106	6 (3-12)
<i>Nepean Hospital</i>	20	1	19	5 (0-25)
<i>Westmead Hospital</i>	93	6	87	6 (2-14)
Wollongong Hospital	15	3	12	20 (4-48)
Australian Capital Territory	39	10	29	26 (13-42)
Access Nephrology	4	2	2	50 (7-93)
Canberra Hospital	35	8	27	23 (10-40)
Victoria	437	98	339	22 (19-27)
Alfred Hospital	31	8	23	26 (12-45)
Austin Hospital	27	12	15	44 (25-65)
Bendigo Hospital	16	3	13	19 (4-46)
Diamond Valley B.Braun Renal Care Centre	1	0	1	0 (0-98)
Eastern Health Integrated Renal Services	28	3	25	11 (2-28)
Epworth Eastern Hospital	2	0	2	0 (0-84)
Epworth Richmond Hospital	5	1	4	20 (1-72)
Forest Hill Dialysis Centre	1	0	1	0 (0-98)
Malvern Dialysis Centre	2	0	2	0 (0-84)
Monash Medical Centre	107	27	80	25 (17-35)
Northern Health Service Melbourne	33	5	28	15 (5-32)
Peninsula Health Renal Services	4	0	4	0 (0-60)
St Vincent's Hospital Melbourne	28	8	20	29 (13-49)
The Royal Melbourne Hospital	70	24	46	34 (23-47)
University Hospital Geelong Barwon Health	24	5	19	21 (7-42)
Western Health Service	58	2	56	3 (0-12)
Tasmania	28	10	18	36 (19-56)
Launceston General Hospital	13	4	9	31 (9-61)

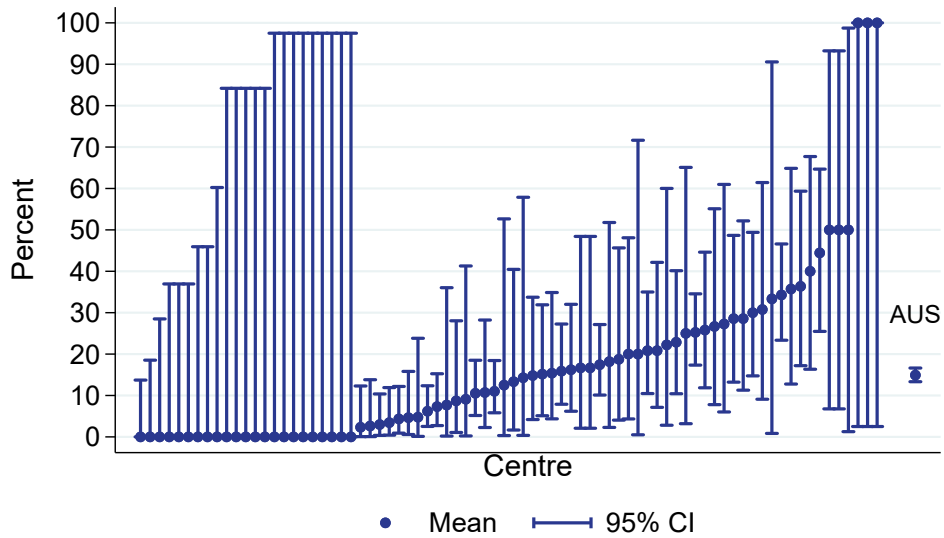
continued on next page

continued from previous page

Centre	Patients	Transplanted or on wait list within 6 months	Neither transplanted nor on wait list	% transplanted or on wait list within 6 months (95 % CI)
Royal Hobart Hospital	15	6	9	40 (16-68)
South Australia	132	14	118	11 (6-17)
Central Northern Adelaide Renal Service	109	12	97	11 (6-18)
Flinders Medical Centre	23	2	21	9 (1-28)
Northern Territory	110	3	107	3 (1-8)
Alice Springs Hospital	43	1	42	2 (0-12)
Royal Darwin Hospital	67	2	65	3 (0-10)
Western Australia	218	28	190	13 (9-18)
Fiona Stanley Hospital	86	15	71	17 (10-27)
Royal Perth Hospital	69	3	66	4 (1-12)
Sir Charles Gairdner Hospital	63	10	53	16 (8-27)

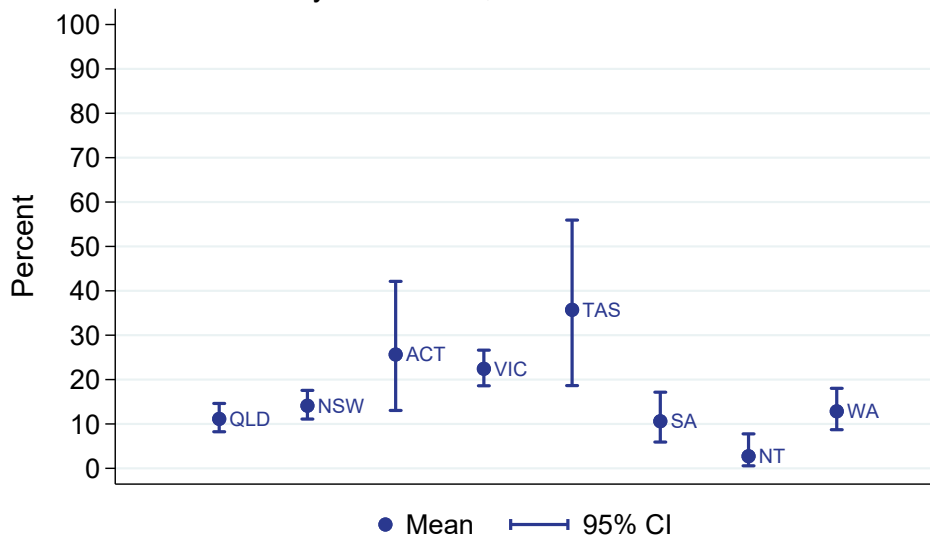
Transplantation wait listing (had a tx or on wl within 6 months)
 % of all new adult patients aged <65 years

Jul 2023 - Jun 2024



Transplantation wait listing (had a tx or on wl within 6 months)
 % of all new adult patients aged <65 years

By Jurisdiction, Jul 2023 - Jun 2024



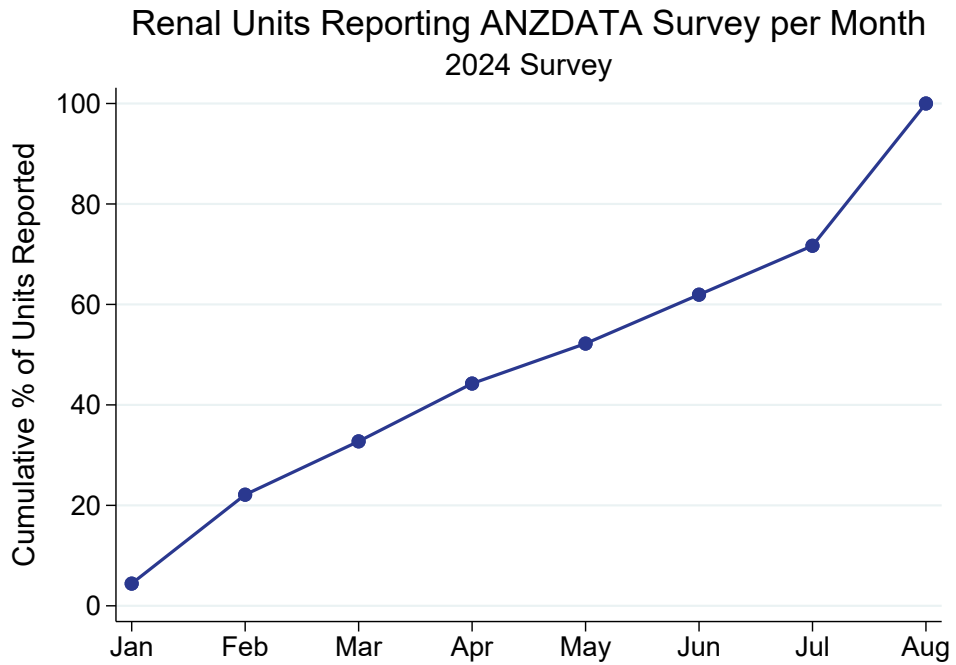
3.2 Paediatric

This table presents the numbers of patients aged ≥ 2 years who have received kidney replacement therapy (KRT) for 6 months, and the percentage who are transplanted or on the wait list within 6 months of KRT start during the observation window by Centre. The 6 month follow-up time means these patients commenced KRT between Jul 2023 and Jun 2024. Patients are included in this paediatric report if they were treated at a paediatric hospital. In rare cases when patients younger than 18 years are treated at an adult centre, they are included in the adult report. Any patients 18 years and older treated at a paediatric hospital are included in this report. This quality indicator is presented for Australia only as New Zealand transplant wait listing data is not currently available to ANZDATA.

Centre	Patients	Transplanted or on wait list within 6 months	Neither transplanted nor on wait list	% transplanted or on wait list within 6 months (95 % CI)
Australia	22	10	12	45 (24-68)
Queensland	10	6	4	60 (26-88)
Child and Adolescent Renal Service	10	6	4	60 (26-88)
New South Wales	5	1	4	20 (1-72)
Sydney Children's Hospital	2	0	2	0 (0-84)
The Children's Hospital at Westmead	3	1	2	33 (1-91)
Victoria	5	3	2	60 (15-95)
Monash Children's Centre	1	0	1	0 (0-98)
Royal Children's Hospital	4	3	1	75 (19-99)
South Australia	1	0	1	0 (0-98)
Women's and Children's Hospital	1	0	1	0 (0-98)
Western Australia	1	0	1	0 (0-98)
Perth Children's Hospital	1	0	1	0 (0-98)

4 ANZDATA annual data survey timeliness

This figure shows the cumulative percentage of renal units that returned their annual ANZDATA survey each month following 31 December 2024. The date of survey return is the date ANZDATA received notification that annual data submission and data validations have been addressed for data lock. This survey return date identifies a Renal Unit is complete for quality indicator reporting.



This table presents the month of annual ANZDATA survey return by each renal unit following 31 December 2024.

Centre	Month of return
Queensland	
Bundaberg Hospital	Mar
Cairns Hospital	Apr
Cairns Private Hospital	Feb
Chermside Dialysis Centre	Aug
Child and Adolescent Renal Service	Feb
Gold Coast Private Hospital	Aug
Gold Coast University Hospital	Aug
Henry Dalziel Dialysis Clinic - Greenslopes	Aug
Hervey Bay Hospital	Apr
Ipswich Hospital	Apr
John Flynn Private Hospital	Jun
Logan Hospital	Feb
Mackay Base Hospital	Mar
Mater Hospital, Brisbane	Feb
Mater Hospital, Townsville	Mar
Morayfield B.Braun Renal Care Centre	Apr
Mount Isa Base Hospital	Aug
Nambour Selangor Private Hospital	Feb
North Lakes Dialysis Centre	Feb
Pindara Renal Unit	Apr
Princess Alexandra Hospital	Feb
Queensland Kidney Transplant Service	Feb
Redlands Hospital	Jan
Rockhampton Hospital	Jun
Royal Brisbane and Women's Hospital	Jul
St Andrew's Ipswich Private Hospital	Apr
St Andrew's Toowoomba B.Braun's Dialysis Clinic	Jan
Sunshine Coast University Hospital	Apr
Sunshine Coast University Private Hospital	Feb
The Wesley Hospital Brisbane	Aug
Toowoomba Hospital	Feb
Torres & Cape Kidney Health	Jun
Townsville University Hospital	Jul
New South Wales	
Bathurst Base Hospital	Jul
Coffs Harbour Hospital	Jul
Concord Repatriation General Hospital	Aug
Dubbo Base Hospital	Aug
Gosford Hospital	Aug
Gregory Hills B.Braun Renal Care Centre	Feb
John Hunter Hospital	Aug
Lismore Base Hospital	Apr
Liverpool Private Dialysis Centre	May
Manning Rural Hospital	Aug
Mater Hospital, North Sydney	Aug
Mayo Private Hospital	Feb
Nepean Hospital	Aug
Newcastle Dialysis Centre	Apr

continued on next page

continued from previous page

Centre	Month of return
Orange Health Service	Aug
Port Macquarie Base Hospital	Mar
Port Macquarie Private Hospital	Mar
Royal North Shore Hospital	Aug
Royal Prince Alfred Hospital	Jul
South West Sydney Renal Service	May
St George Hospital	Apr
St Vincent's Hospital Sydney	May
St Vincent's Lismore Private Dialysis Centre	Feb
Sydney Adventist Hospital	Feb
Sydney Children's Hospital	Feb
Tamworth Hospital	Mar
The Children's Hospital at Westmead	May
The Prince of Wales Hospital	Aug
Tweed Valley Hospital	Jun
Wagga Wagga Base Hospital	Aug
Westmead Hospital	Aug
Wollongong Hospital	Jun
Australian Capital Territory	
Access Nephrology	Aug
Canberra Hospital	Mar
Victoria	
Alfred Hospital	Aug
Austin Hospital	Aug
Bendigo Hospital	Mar
Diamond Valley B.Braun Renal Care Centre	Mar
Eastern Health Integrated Renal Services	Jul
Epworth Eastern Hospital	Jan
Epworth Geelong Hospital	Mar
Epworth Richmond Hospital	Feb
Forest Hill Dialysis Centre	Apr
Malvern Dialysis Centre	Jan
Monash Children's Centre	Jan
Monash Medical Centre	Jun
North Melbourne B.Braun Renal Care Centre	Feb
Northern Health Service Melbourne	Mar
Peninsula Health Renal Services	Jul
Royal Children's Hospital	Feb
South Eastern Private Hospital Dialysis Centre	Aug
St Vincent's Hospital Melbourne	Aug
Sunshine Private Dialysis Centre Fresenius	Aug
The Royal Melbourne Hospital	Apr
University Hospital Geelong Barwon Health	Jul
Western Health Service	Jun
Tasmania	
Launceston General Hospital	Aug
Royal Hobart Hospital	May
South Australia	

continued on next page

continued from previous page

Centre	Month of return
Central Northern Adelaide Renal Service	Jun
Flinders Medical Centre	Mar
Women's and Children's Hospital	May
Northern Territory	
Alice Springs Hospital	Jul
Royal Darwin Hospital	Aug
Western Australia	
Fiona Stanley Hospital	Aug
Perth Children's Hospital	May
Royal Perth Hospital	Aug
Sir Charles Gairdner Hospital	Aug
New Zealand	
Auckland City Hospital	Jun
Bay of Plenty Renal Unit	May
Christchurch Hospital	Aug
Dunedin Hospital	Jun
Hawkes Bay Hospital	Apr
Middlemore Hospital	Jul
Palmerston North Hospital	Aug
Starship Children's Hospital	Feb
Taranaki Hospital	Feb
Waikato Hospital	Jul
Waitemata Renal Service	Aug
Wellington Regional Hospital	Jun
Whangarei Hospital	May

5 Kidney Replacement Therapy (KRT) Modality

5.1 Incident Modality

5.1.1 Adult

This table presents the numbers (N) of incident kidney replacement therapy (KRT) patients during the observation window by modality at commencement and centre. Modality is categorised as pre-emptive kidney transplant (TX), peritoneal dialysis (PD), home haemodialysis (including commencing training) and community house haemodialysis (HHD*) and facility haemodialysis (FacHD). Also presented are the percentages (%) of each modality out of the total incident KRT cohort. Patients are excluded from this adult report if they were treated at a paediatric hospital. In rare cases when patients younger than 18 years are treated at an adult centre, they are included in this adult report. Any patients 18 years and older treated at a paediatric hospital are excluded from this report.

Centre	N KRT	N TX	% TX	N PD	% PD	N HHD*	% HHD*	N FacHD	% FacHD
Australia	3442	89	3	870	25	57	2	2426	70
Queensland	722	9	1	165	23	12	2	536	74
Bundaberg Hospital	23	0	0	3	13	0	0	20	87
Cairns Hospital	74	0	0	10	14	3	4	61	82
Cairns Private Hospital	4	0	0	0	0	0	0	4	100
Chermside Dialysis Centre	6	0	0	0	0	0	0	6	100
Gold Coast Private Hospital	6	0	0	0	0	0	0	6	100
Gold Coast University Hospital	60	1	2	11	18	3	5	45	75
Henry Dalziel Dialysis Clinic - Greenslopes	24	0	0	0	0	0	0	24	100
Hерvey Bay Hospital	24	0	0	7	29	0	0	17	71
Ipswich Hospital	32	0	0	9	28	0	0	23	72
John Flynn Private Hospital	5	0	0	0	0	0	0	5	100
Mackay Base Hospital	16	0	0	3	19	0	0	13	81
Mater Hospital, Brisbane	12	0	0	0	0	0	0	12	100
Mater Hospital, Townsville	5	0	0	0	0	0	0	5	100
Metro South Kidney and Transplant Services	137	4	3	54	39	6	4	73	53
<i>Logan Hospital</i>	55	1	2	23	42	0	0	31	56
<i>Princess Alexandra Hospital</i>	75	3	4	31	41	6	8	35	47
<i>Redlands Hospital</i>	7	0	0	0	0	0	0	7	100
Morayfield B.Braun Renal Care Centre	1	0	0	0	0	0	0	1	100
Nambour Selangor Private Hospital	2	0	0	0	0	0	0	2	100
North Lakes Dialysis Centre	10	0	0	0	0	0	0	10	100
Pindara Renal Unit	6	0	0	0	0	0	0	6	100
Queensland Kidney Transplant Service	1	1	100	0	0	0	0	0	0

continued on next page

continued from previous page

Centre	N KRT	N TX	% TX	N PD	% PD	N HHD*	% HHD*	N FacHD	% FacHD
Rockhampton Hospital	26	0	0	7	27	0	0	19	73
Royal Brisbane and Women's Hospital	74	1	1	29	39	0	0	44	59
St Andrew's Ipswich Private Hospital	10	0	0	0	0	0	0	10	100
St Andrew's Toowoomba B.Braun's Dialysis Clinic	9	0	0	0	0	0	0	9	100
Sunshine Coast University Hospital	32	1	3	9	28	0	0	22	69
Sunshine Coast University Private Hospital	4	0	0	0	0	0	0	4	100
The Wesley Hospital Brisbane	29	1	3	0	0	0	0	28	97
Toowoomba Hospital	28	0	0	11	39	0	0	17	61
Torres & Cape Kidney Health	1	0	0	0	0	0	0	1	100
Townsville University Hospital	61	0	0	12	20	0	0	49	80
New South Wales	962	28	3	259	27	24	2	651	68
Bathurst Base Hospital	1	0	0	0	0	0	0	1	100
Coffs Harbour Hospital	12	1	8	1	8	0	0	10	83
Concord Repatriation General Hospital	39	1	3	10	26	0	0	28	72
Dubbo Base Hospital	22	2	9	3	14	0	0	17	77
Gosford Hospital	39	0	0	6	15	0	0	33	85
Gregory Hills B.Braun Renal Care Centre	4	0	0	0	0	0	0	4	100
John Hunter Hospital	70	2	3	21	30	1	1	46	66
Lismore Base Hospital	22	1	5	1	5	0	0	20	91
Liverpool Private Dialysis Centre	2	0	0	0	0	0	0	2	100
Manning Rural Hospital	11	0	0	2	18	0	0	9	82
Mater Hospital, North Sydney	5	0	0	0	0	0	0	5	100
Mayo Private Hospital	3	0	0	0	0	0	0	3	100
Newcastle Dialysis Centre	2	0	0	0	0	0	0	2	100
Orange Health Service	17	0	0	1	6	0	0	16	94
Port Macquarie Base Hospital	18	1	6	0	0	0	0	17	94
Royal North Shore Hospital	65	7	11	17	26	4	6	37	57
Royal Prince Alfred Hospital	46	5	11	6	13	0	0	35	76
South West Sydney Renal Service	167	1	1	62	37	9	5	95	57
St George Hospital	41	1	2	15	37	3	7	22	54
St Vincent's Hospital Sydney	23	0	0	2	9	0	0	21	91
St Vincent's Lismore Private Dialysis Centre	5	0	0	0	0	0	0	5	100
Sydney Adventist Hospital	6	0	0	0	0	0	0	6	100
Tamworth Hospital	27	0	0	6	22	0	0	21	78

continued on next page

continued from previous page

Centre	N KRT	N TX	% TX	N PD	% PD	N HHD*	% HHD*	N FacHD	% FacHD
The Prince of Wales Hospital	20	2	10	8	40	0	0	10	50
Tweed Valley Hospital	15	0	0	4	27	0	0	11	73
Wagga Wagga Base Hospital	36	1	3	4	11	0	0	31	86
Western Sydney Renal Health Services	212	3	1	80	38	7	3	122	58
<i>Nepean Hospital</i>	53	1	2	10	19	0	0	42	79
<i>Westmead Hospital</i>	159	2	1	70	44	7	4	80	50
Wollongong Hospital	32	0	0	10	31	0	0	22	69
Australian Capital Territory	78	3	4	15	19	2	3	58	74
Access Nephrology	10	1	10	0	0	0	0	9	90
Canberra Hospital	68	2	3	15	22	2	3	49	72
Victoria	879	27	3	247	28	12	1	593	67
Alfred Hospital	69	0	0	27	39	0	0	42	61
Austin Hospital	62	11	18	9	15	2	3	40	65
Bendigo Hospital	34	0	0	15	44	0	0	19	56
Diamond Valley B.Braun Renal Care Centre	3	0	0	0	0	0	0	3	100
Eastern Health Integrated Renal Services	57	0	0	16	28	1	2	40	70
Epworth Eastern Hospital	10	0	0	0	0	0	0	10	100
Epworth Richmond Hospital	14	0	0	0	0	0	0	14	100
Forest Hill Dialysis Centre	2	0	0	0	0	0	0	2	100
Malvern Dialysis Centre	15	0	0	0	0	0	0	15	100
Monash Medical Centre	193	8	4	57	30	6	3	122	63
Northern Health Service Melbourne	60	0	0	13	22	0	0	47	78
Peninsula Health Renal Services	16	0	0	0	0	0	0	16	100
South Eastern Private Hospital Dialysis Centre	4	0	0	0	0	0	0	4	100
St Vincent's Hospital Melbourne	63	1	2	32	51	1	2	29	46
Sunshine Private Dialysis Centre Fresenius	2	0	0	0	0	0	0	2	100
The Royal Melbourne Hospital	128	4	3	40	31	0	0	84	66
University Hospital Geelong Barwon Health	39	0	0	10	26	2	5	27	69
Western Health Service	108	3	3	28	26	0	0	77	71
Tasmania	63	1	2	16	25	0	0	46	73
Launceston General Hospital	29	1	3	10	34	0	0	18	62
Royal Hobart Hospital	34	0	0	6	18	0	0	28	82

continued on next page

continued from previous page

Centre	N KRT	N TX	% TX	N PD	% PD	N HHD*	% HHD*	N FacHD	% FacHD
South Australia	245	14	6	54	22	4	2	173	71
Central Northern Adelaide Renal Service	190	13	7	42	22	3	2	132	69
Flinders Medical Centre	55	1	2	12	22	1	2	41	75
Northern Territory	112	2	2	9	8	0	0	101	90
Alice Springs Hospital	52	1	2	0	0	0	0	51	98
Royal Darwin Hospital	60	1	2	9	15	0	0	50	83
Western Australia	381	5	1	105	28	3	1	268	70
Fiona Stanley Hospital	141	1	1	36	26	2	1	102	72
Royal Perth Hospital	142	1	1	34	24	0	0	107	75
Sir Charles Gairdner Hospital	98	3	3	35	36	1	1	59	60
New Zealand	756	33	4	212	28	15	2	496	66
Auckland City Hospital	83	1	1	18	22	4	5	60	72
Bay of Plenty Renal Unit	2	0	0	1	50	0	0	1	50
Christchurch Hospital	43	7	16	19	44	0	0	17	40
Dunedin Hospital	25	1	4	7	28	0	0	17	68
Hawkes Bay Hospital	21	0	0	4	19	0	0	17	81
Middlemore Hospital	174	5	3	37	21	10	6	122	70
Palmerston North Hospital	34	1	3	4	12	0	0	29	85
Taranaki Hospital	14	1	7	8	57	0	0	5	36
Waikato Hospital	151	5	3	47	31	1	1	98	65
Waitemata Renal Service	84	6	7	20	24	0	0	58	69
Wellington Regional Hospital	87	6	7	38	44	0	0	43	49
Whangarei Hospital	38	0	0	9	24	0	0	29	76

5.1.2 Paediatric

This table presents the numbers (N) of incident kidney replacement therapy (KRT) patients during the observation window by modality at commencement and centre. Modality is categorised as pre-emptive kidney transplant (TX), peritoneal dialysis (PD), home haemodialysis (including commencing training) and community house haemodialysis (HHD*) and facility haemodialysis (FacHD). Also presented are the percentages (%) of each modality out of the total incident KRT cohort. Patients are included in this paediatric report if they were treated at a paediatric hospital. In rare cases when patients younger than 18 years are treated at an adult centre, they are included in the adult report. Any patients 18 years and older treated at a paediatric hospital are included in this report.

Centre	N KRT	N TX	% TX	N PD	% PD	N HHD*	% HHD*	N FacHD	% FacHD
Australia	38	5	13	21	55	0	0	12	32
Queensland	9	1	11	7	78	0	0	1	11
Child and Adolescent Renal Service	9	1	11	7	78	0	0	1	11
New South Wales	7	1	14	2	29	0	0	4	57
Sydney Children's Hospital	3	1	33	2	67	0	0	0	0
The Children's Hospital at Westmead	4	0	0	0	0	0	0	4	100
Victoria	17	2	12	9	53	0	0	6	35
Monash Children's Centre	5	0	0	3	60	0	0	2	40
Royal Children's Hospital	12	2	17	6	50	0	0	4	33
South Australia	3	0	0	3	100	0	0	0	0
Women's and Children's Hospital	3	0	0	3	100	0	0	0	0
Western Australia	2	1	50	0	0	0	0	1	50
Perth Children's Hospital	2	1	50	0	0	0	0	1	50
New Zealand	4	1	25	3	75	0	0	0	0
Starship Children's Hospital	4	1	25	3	75	0	0	0	0

5.2 Prevalent Modality

5.2.1 Adult

This table presents the numbers (N) of prevalent kidney replacement therapy (KRT) patients at the end of the observation window by modality and centre. Modality is categorised as functioning kidney transplant (TX), peritoneal dialysis (PD), hybrid peritoneal dialysis and haemodialysis (Hybrid), home haemodialysis including community house haemodialysis (HHD*) and facility haemodialysis (FacHD). Also presented are the percentages (%) of each modality out of the total prevalent KRT cohort. Patients are excluded from this adult report if they were treated at a paediatric hospital. In rare cases when patients younger than 18 years are treated at an adult centre, they are included in this adult report. Any patients 18 years and older treated at a paediatric hospital are excluded from this report. Reporting of hybrid dialysis commenced in 2023, and there may be underreporting as this is a new treatment modality.

Centre	N KRT	N TX	% TX	N PD	% PD	N Hybrid	% Hybrid	N HHD*	% HHD*	N FacHD	% FacHD
Australia	29774	13809	46	2638	9	34	0	1030	3	12263	41
Queensland	5914	2614	44	478	8	6	0	207	4	2609	44
Bundaberg Hospital	145	58	40	13	9	0	0	5	3	69	48
Cairns Hospital	470	127	27	30	6	4	1	30	6	279	59
Cairns Private Hospital	22	0	0	0	0	0	0	0	0	22	100
Chermside Dialysis Centre	56	27	48	0	0	0	0	0	0	29	52
Gold Coast Private Hospital	31	0	0	0	0	0	0	0	0	31	100
Gold Coast University Hospital	499	263	53	43	9	0	0	30	6	163	33
Henry Dalziel Dialysis Clinic - Greenslopes	211	104	49	0	0	0	0	0	0	107	51
Hervey Bay Hospital	132	41	31	22	17	0	0	1	1	68	52
Ipswich Hospital	131	18	14	22	17	0	0	0	0	91	69
John Flynn Private Hospital	113	83	73	0	0	0	0	0	0	30	27
Mackay Base Hospital	179	71	40	14	8	0	0	0	0	94	53
Mater Hospital, Brisbane	153	76	50	0	0	0	0	0	0	77	50
Mater Hospital, Townsville	35	2	6	0	0	0	0	0	0	33	94
Metro South Kidney and Transplant Services	573	0	0	150	26	0	0	68	12	355	62
<i>Logan Hospital</i>	<i>219</i>	<i>0</i>	<i>0</i>	<i>64</i>	<i>29</i>	<i>0</i>	<i>0</i>	<i>0</i>	<i>0</i>	<i>155</i>	<i>71</i>
<i>Princess Alexandra Hospital</i>	<i>294</i>	<i>0</i>	<i>0</i>	<i>86</i>	<i>29</i>	<i>0</i>	<i>0</i>	<i>68</i>	<i>23</i>	<i>140</i>	<i>48</i>
<i>Redlands Hospital</i>	<i>60</i>	<i>0</i>	<i>0</i>	<i>0</i>	<i>0</i>	<i>0</i>	<i>0</i>	<i>0</i>	<i>0</i>	<i>60</i>	<i>100</i>
Morayfield B.Braun Renal Care Centre	5	0	0	0	0	0	0	0	0	5	100
Mount Isa Base Hospital	64	12	19	0	0	0	0	0	0	52	81
Nambour Selangor Private Hospital	15	0	0	0	0	0	0	0	0	15	100
North Lakes Dialysis Centre	43	2	5	0	0	0	0	0	0	41	95
Pindara Renal Unit	24	0	0	0	0	0	0	0	0	24	100

continued on next page

continued from previous page

Centre	N KRT	N TX	% TX	N PD	% PD	N Hybrid	% Hybrid	N HHD*	% HHD*	N FacHD	% FacHD
Queensland Kidney Transplant Service	781	781	100	0	0	0	0	0	0	0	0
Rockhampton Hospital	222	70	32	29	13	0	0	1	0	122	55
Royal Brisbane and Women's Hospital	627	254	41	65	10	1	0	32	5	275	44
St Andrew's Ipswich Private Hospital	44	7	16	0	0	0	0	0	0	37	84
St Andrew's Toowoomba B.Braun's Dialysis Clinic	26	0	0	0	0	0	0	0	0	26	100
Sunshine Coast University Hospital	416	246	59	12	3	0	0	12	3	146	35
Sunshine Coast University Private Hospital	22	0	0	0	0	0	0	0	0	22	100
The Wesley Hospital Brisbane	178	123	69	0	0	0	0	0	0	55	31
Toowoomba Hospital	273	121	44	38	14	1	0	19	7	94	34
Torres & Cape Kidney Health	59	19	32	0	0	0	0	0	0	40	68
Townsville University Hospital	365	109	30	40	11	0	0	9	2	207	57
New South Wales	8463	3809	45	969	11	9	0	387	5	3289	39
Bathurst Base Hospital	29	12	41	0	0	0	0	0	0	17	59
Coffs Harbour Hospital	128	61	48	6	5	0	0	3	2	58	45
Concord Repatriation General Hospital	294	119	40	32	11	0	0	16	5	127	43
Dubbo Base Hospital	145	64	44	5	3	0	0	4	3	72	50
Gosford Hospital	308	118	38	19	6	0	0	7	2	164	53
Gregory Hills B.Braun Renal Care Centre	28	0	0	0	0	0	0	0	0	28	100
John Hunter Hospital	652	369	57	54	8	2	0	25	4	202	31
Lismore Base Hospital	206	96	47	15	7	0	0	17	8	78	38
Liverpool Private Dialysis Centre	35	0	0	0	0	0	0	0	0	35	100
Manning Rural Hospital	76	15	20	12	16	1	1	3	4	45	59
Mater Hospital, North Sydney	76	35	46	0	0	0	0	0	0	41	54
Mayo Private Hospital	19	0	0	0	0	0	0	0	0	19	100
Newcastle Dialysis Centre	39	0	0	0	0	0	0	0	0	39	100
Orange Health Service	119	47	39	7	6	0	0	2	2	63	53
Port Macquarie Base Hospital	110	41	37	6	5	0	0	2	2	61	55
Port Macquarie Private Hospital	9	0	0	0	0	0	0	0	0	9	100
Royal North Shore Hospital	708	370	52	57	8	1	0	45	6	235	33
Royal Prince Alfred Hospital	634	438	69	28	4	0	0	35	6	133	21
South West Sydney Renal Service	1236	433	35	240	19	0	0	75	6	488	39
St George Hospital	483	255	53	36	7	0	0	22	5	170	35
St Vincent's Hospital Sydney	205	110	54	15	7	0	0	21	10	59	29

continued on next page

continued from previous page

Centre	N KRT	N TX	% TX	N PD	% PD	N Hybrid	% Hybrid	N HHD*	% HHD*	N FacHD	% FacHD
St Vincent's Lismore Private Dialysis Centre	15	0	0	0	0	0	0	0	0	15	100
Sydney Adventist Hospital	50	0	0	0	0	0	0	0	0	50	100
Tamworth Hospital	184	75	41	13	7	0	0	2	1	94	51
The Prince of Wales Hospital	305	180	59	30	10	0	0	8	3	87	29
Tweed Valley Hospital	80	12	15	11	14	0	0	0	0	57	71
Wagga Wagga Base Hospital	190	52	27	13	7	3	2	8	4	114	60
Western Sydney Renal Health Services	1702	737	43	321	19	1	0	83	5	560	33
<i>Nepean Hospital</i>	357	137	38	47	13	0	0	3	1	170	48
<i>Westmead Hospital</i>	1345	600	45	274	20	1	0	80	6	390	29
Wollongong Hospital	398	170	43	49	12	1	0	9	2	169	42
Australian Capital Territory	629	298	47	39	6	0	0	17	3	275	44
Access Nephrology	102	71	70	0	0	0	0	0	0	31	30
Canberra Hospital	527	227	43	39	7	0	0	17	3	244	46
Victoria	7794	4070	52	634	8	2	0	235	3	2853	37
Alfred Hospital	480	292	61	71	15	1	0	8	2	108	22
Austin Hospital	754	505	67	30	4	0	0	27	4	192	25
Bendigo Hospital	158	26	16	48	30	0	0	0	0	84	53
Diamond Valley B.Braun Renal Care Centre	37	0	0	0	0	0	0	0	0	37	100
Eastern Health Integrated Renal Services	475	214	45	42	9	0	0	11	2	208	44
Epworth Eastern Hospital	49	0	0	0	0	0	0	0	0	49	100
Epworth Geelong Hospital	21	0	0	0	0	0	0	0	0	21	100
Epworth Richmond Hospital	31	0	0	0	0	0	0	0	0	31	100
Forest Hill Dialysis Centre	33	0	0	0	0	0	0	0	0	33	100
Malvern Dialysis Centre	63	0	0	0	0	0	0	0	0	63	100
Monash Medical Centre	1870	1098	59	132	7	0	0	80	4	560	30
North Melbourne B.Braun Renal Care Centre	20	0	0	0	0	0	0	0	0	20	100
Northern Health Service Melbourne	295	65	22	37	13	0	0	10	3	183	62
Peninsula Health Renal Services	96	0	0	0	0	0	0	0	0	96	100
South Eastern Private Hospital Dialysis Centre	39	0	0	0	0	0	0	0	0	39	100
St Vincent's Hospital Melbourne	611	295	48	75	12	0	0	12	2	229	37
Sunshine Private Dialysis Centre Fresenius	31	0	0	0	0	0	0	0	0	31	100
The Royal Melbourne Hospital	1804	1229	68	82	5	0	0	33	2	460	25

continued on next page

continued from previous page

Centre	N KRT	N TX	% TX	N PD	% PD	N Hybrid	% Hybrid	N HHD*	% HHD*	N FacHD	% FacHD
University Hospital Geelong Barwon Health	356	196	55	23	6	0	0	30	8	107	30
Western Health Service	571	150	26	94	16	1	0	24	4	302	53
Tasmania	569	334	59	52	9	0	0	7	1	176	31
Launceston General Hospital	303	167	55	35	12	0	0	6	2	95	31
Royal Hobart Hospital	266	167	63	17	6	0	0	1	0	81	30
South Australia	2261	1164	51	161	7	15	1	36	2	885	39
Central Northern Adelaide Renal Service	1761	903	51	125	7	12	1	35	2	686	39
Flinders Medical Centre	500	261	52	36	7	3	1	1	0	199	40
Northern Territory	965	162	17	39	4	0	0	34	4	730	76
Alice Springs Hospital	473	65	14	1	0	0	0	0	0	407	86
Royal Darwin Hospital	492	97	20	38	8	0	0	34	7	323	66
Western Australia	3179	1358	43	266	8	2	0	107	3	1446	45
Fiona Stanley Hospital	1246	561	45	93	7	2	0	42	3	548	44
Royal Perth Hospital	937	290	31	71	8	0	0	38	4	538	57
Sir Charles Gairdner Hospital	996	507	51	102	10	0	0	27	3	360	36
New Zealand	5690	2383	42	759	13	1	0	392	7	2155	38
Auckland City Hospital	696	272	39	44	6	0	0	62	9	318	46
Bay of Plenty Renal Unit	234	92	39	61	26	0	0	0	0	81	35
Christchurch Hospital	506	352	70	74	15	0	0	22	4	58	11
Dunedin Hospital	220	139	63	26	12	0	0	30	14	25	11
Hawkes Bay Hospital	183	86	47	17	9	0	0	9	5	71	39
Middlemore Hospital	1116	287	26	148	13	0	0	96	9	585	52
Palmerston North Hospital	304	107	35	30	10	0	0	20	7	147	48
Taranaki Hospital	108	55	51	19	18	0	0	6	6	28	26
Waikato Hospital	706	238	34	146	21	1	0	76	11	245	35
Waitemata Renal Service	653	292	45	48	7	0	0	30	5	283	43
Wellington Regional Hospital	687	349	51	118	17	0	0	24	3	196	29
Whangarei Hospital	277	114	41	28	10	0	0	17	6	118	43

5.2.2 Paediatric

This table presents the numbers (N) of prevalent kidney replacement therapy (KRT) patients at the end of the observation window by modality and centre. Modality is categorised as functioning kidney transplant (TX), peritoneal dialysis (PD), hybrid peritoneal dialysis and haemodialysis (Hybrid), home haemodialysis including community house haemodialysis (HHD*) and facility haemodialysis (FacHD). Also presented are the percentages (%) of each modality out of the total prevalent KRT cohort. Patients are included in this paediatric report if they were treated at a paediatric hospital. In rare cases when patients younger than 18 years are treated at an adult centre, they are included in the adult report. Any patients 18 years and older treated at a paediatric hospital are included in this report. Reporting of hybrid dialysis commenced in 2023, and there may be underreporting as this is a new treatment modality.

Centre	N KRT	N TX	% TX	N PD	% PD	N Hybrid	% Hybrid	N HHD*	% HHD*	N FacHD	% FacHD
Australia	319	260	82	42	13	1	0	0	0	16	5
Queensland	79	64	81	15	19	0	0	0	0	0	0
Child and Adolescent Renal Service	79	64	81	15	19	0	0	0	0	0	0
New South Wales	94	87	93	5	5	0	0	0	0	2	2
Sydney Children's Hospital	24	19	79	4	17	0	0	0	0	1	4
The Children's Hospital at Westmead	70	68	97	1	1	0	0	0	0	1	1
Victoria	105	77	73	16	15	1	1	0	0	11	10
Monash Children's Centre	32	19	59	6	19	1	3	0	0	6	19
Royal Children's Hospital	73	58	79	10	14	0	0	0	0	5	7
South Australia	17	13	76	3	18	0	0	0	0	1	6
Women's and Children's Hospital	17	13	76	3	18	0	0	0	0	1	6
Western Australia	24	19	79	3	12	0	0	0	0	2	8
Perth Children's Hospital	24	19	79	3	12	0	0	0	0	2	8
New Zealand	57	50	88	5	9	0	0	0	0	2	4
Starship Children's Hospital	57	50	88	5	9	0	0	0	0	2	4