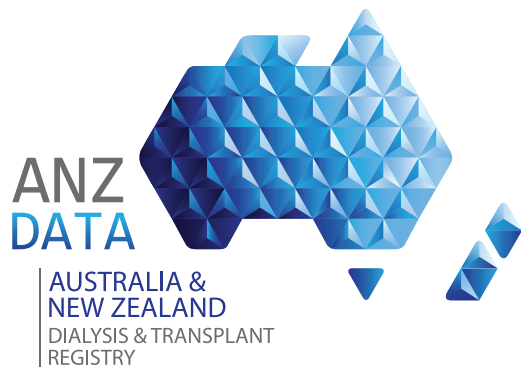


INTERIM



Quality Indicators

Annual Report

01 January 2025 - 31 December 2025

Real-Time Database

PUBLISHED 2 March 2026

The release of the Quality Indicator report is now an ANZDATA/ANZSN co-badged report. This information is provided as it is reported to ANZDATA. The reporting arrangements provide additional information to units on quality indicators. Units should use these data to monitor clinical practice and outcomes.

Suggested Citation

ANZDATA Registry. 2025 Quality Indicators Annual Report - Real-Time Database. Australia and New Zealand Dialysis and Transplant Registry, Adelaide, Australia. 2026. Available at: <http://www.anzdata.org.au>

INTERIM

Note on Reports from the Real-Time Database

This report has been generated from the “real-time” database, as contributed by units at the date of publication. Results are dependent on the timeliness and completeness of data submission by units. We try to provide indices to allow evaluation of the completeness both overall and for individual hospitals. However, results are preliminary and subject to change. The subsequent report from the Analysis database, following the end of year survey, will provide the final results for this observation period.

Contents

1	Incidence of Peritonitis in Patients Treated with Peritoneal Dialysis	3
1.1	Adult	3
1.2	Paediatric	7
2	Dialysis Access Planning at Commencement of Dialysis	8
2.1	All Dialysis Access Planning	8
2.1.1	Adult	8
2.1.2	Paediatric	14
2.2	Vascular Access at First Haemodialysis	15
2.2.1	Adult	15
2.2.2	Paediatric	22
2.3	HD Vascular Access Planning	23
2.3.1	Adult	23
2.3.2	Paediatric	29
2.4	PD Catheter Planning	30
2.4.1	Adult	30
2.4.2	Paediatric	35
3	Transplantation Wait Listing	36
3.1	Adult	36
3.2	Paediatric	41
4	ANZDATA annual data survey timeliness	42
5	Kidney Replacement Therapy (KRT) Modality	46
5.1	Incident Modality	46
5.1.1	Adult	46
5.1.2	Paediatric	50
5.2	Prevalent Modality	51
5.2.1	Adult	51
5.2.2	Paediatric	56

1 Incidence of Peritonitis in Patients Treated with Peritoneal Dialysis

1.1 Adult

This table presents the total number of peritonitis episodes and patient exposure in years by Centre. Patient totals, exposure and peritonitis episodes were determined using the hospital at which the patient was receiving treatment at the time. So, if a patient transferred units during the observation period, the subsequent exposure and peritonitis episodes were allocated to the new unit. Months per episode (PM per Episode) is also reported. This should be interpreted as the average number of months between episodes of peritonitis; it can not be calculated if the peritonitis rate is zero. The 2024 episodes are based on the 2024 analysis database and are provided to allow assessment of possible under-reporting. This is a particular issue with peritonitis reporting. Patients are excluded from this adult report if they were treated at a paediatric hospital. In rare cases when patients younger than 18 years are treated at an adult centre, they are included in this adult report. Any patients 18 years and older treated at a paediatric hospital are excluded from this report. This quality indicator is presented for Australia only as New Zealand peritonitis episode data is reported through the New Zealand Peritoneal Dialysis Registry. Note that the 2022 International Society for Peritoneal Dialysis peritonitis guideline has a target that the overall peritonitis rate should be no more than 0.40 episodes per year at risk.

Centre	PD Patients	No of Episodes	Person Years	Rate (95% CI)	PM per Episode (95% CI)	2024 Episodes
Australia	3716	622	2609.96	0.24 (0.22-0.26)	50.35 (46.55-54.56)	719
Queensland	657	124	448.06	0.28 (0.23-0.33)	43.36 (36.37-52.13)	143
Bundaberg Hospital	17	0	10.25	0.00 (0.00-0.36)	. (33.35-.)	2
Cairns Hospital	47	0	33.99	0.00 (0.00-0.11)	. (110.56-.)	5
Gold Coast University Hospital	49	3	33.37	0.09 (0.02-0.26)	133.50 (45.68-647.34)	7
Henry Dalziel Dialysis Clinic - Greenslopes	1	0	0.01	0.00 (0.00-269.47)	. (0.04-.)	0
Hervey Bay Hospital	29	8	20.19	0.40 (0.17-0.78)	30.28 (15.37-70.13)	11
Ipswich Hospital	30	7	20.55	0.34 (0.14-0.70)	35.23 (17.10-87.62)	6
Mackay Base Hospital	17	3	11.71	0.26 (0.05-0.75)	46.83 (16.02-227.07)	1
Metro South Kidney and Transplant Services	200	53	139.79	0.38 (0.28-0.50)	31.65 (24.20-42.25)	42
<i>Logan Hospital</i>	87	32	63.67	0.50 (0.34-0.71)	23.88 (16.91-34.91)	23
<i>Princess Alexandra Hospital</i>	112	21	75.77	0.28 (0.17-0.42)	43.30 (28.33-69.95)	19
<i>Redlands Hospital</i>	1	0	0.34	0.00 (0.00-10.69)	. (1.12-.)	0
Queensland Kidney Transplant Service	1	0	0.73	0.00 (0.00-5.07)	. (2.37-.)	0
Rockhampton Hospital	34	10	22.37	0.45 (0.21-0.82)	26.84 (14.60-55.97)	8
Royal Brisbane and Women's Hospital	98	18	61.62	0.29 (0.17-0.46)	41.08 (25.99-69.32)	21
Sunshine Coast University Hospital	17	3	9.93	0.30 (0.06-0.88)	39.73 (13.60-192.66)	1
Toowoomba Hospital	67	7	45.32	0.15 (0.06-0.32)	77.69 (37.71-193.24)	13
Townsville University Hospital	50	12	38.22	0.31 (0.16-0.55)	38.22 (21.88-73.97)	26

continued on next page

continued from previous page

Centre	PD Patients	No of Episodes	Person Years	Rate (95% CI)	PM per Episode (95% CI)	2024 Episodes
New South Wales	1359	290	972.48	0.30 (0.26-0.33)	40.24 (35.87-45.31)	312
Coffs Harbour Hospital	5	0	4.25	0.00 (0.00-0.87)	(13.81-.)	1
Concord Repatriation General Hospital	46	5	33.89	0.15 (0.05-0.34)	81.33 (34.85-250.47)	4
Dubbo Base Hospital	5	1	3.42	0.29 (0.01-1.63)	41.03 (7.36-1620.79)	2
Gosford Hospital	31	5	19.61	0.25 (0.08-0.60)	47.06 (20.17-144.94)	4
John Hunter Hospital	84	28	53.85	0.52 (0.35-0.75)	23.08 (15.97-34.73)	17
Lismore Base Hospital	22	11	15.37	0.72 (0.36-1.28)	16.76 (9.37-33.58)	7
Manning Rural Hospital	14	2	10.83	0.18 (0.02-0.67)	64.95 (17.98-536.34)	1
Orange Health Service	14	4	10.57	0.38 (0.10-0.97)	31.71 (12.39-116.39)	3
Port Macquarie Base Hospital	12	1	7.30	0.14 (0.00-0.76)	87.66 (15.73-3462.19)	0
Royal North Shore Hospital	87	11	60.43	0.18 (0.09-0.33)	65.93 (36.85-132.07)	18
Royal Prince Alfred Hospital	40	6	28.73	0.21 (0.08-0.45)	57.45 (26.40-156.55)	6
South West Sydney Renal Service	326	89	233.02	0.38 (0.31-0.47)	31.42 (25.53-39.12)	86
St George Hospital	46	3	30.79	0.10 (0.02-0.28)	123.16 (42.14-597.21)	5
St Vincent's Hospital Sydney	21	3	14.52	0.21 (0.04-0.60)	58.10 (19.88-281.72)	8
Tamworth Hospital	22	2	13.85	0.14 (0.02-0.52)	83.10 (23.01-686.22)	3
The Prince of Wales Hospital	42	8	30.96	0.26 (0.11-0.51)	46.44 (23.57-107.56)	5
Tweed Valley Hospital	13	2	10.02	0.20 (0.02-0.72)	60.11 (16.64-496.32)	3
Wagga Wagga Base Hospital	21	5	13.62	0.37 (0.12-0.86)	32.69 (14.01-100.68)	2
Western Sydney Renal Health Services	433	92	324.50	0.28 (0.23-0.35)	42.33 (34.51-52.51)	125
<i>Nepean Hospital</i>	60	17	46.44	0.37 (0.21-0.59)	32.78 (20.47-56.27)	17
<i>Westmead Hospital</i>	373	75	278.07	0.27 (0.21-0.34)	44.49 (35.49-56.56)	108
Wollongong Hospital	75	12	52.96	0.23 (0.12-0.40)	52.96 (30.32-102.50)	12
Australian Capital Territory	48	5	38.43	0.13 (0.04-0.30)	92.22 (39.52-284.02)	9
Canberra Hospital	48	5	38.43	0.13 (0.04-0.30)	92.22 (39.52-284.02)	9
Victoria	923	101	628.61	0.16 (0.13-0.20)	74.69 (61.47-91.69)	127
Alfred Hospital	107	9	74.87	0.12 (0.05-0.23)	99.82 (52.58-218.30)	16
Austin Hospital	40	11	27.16	0.40 (0.20-0.72)	29.63 (16.56-59.36)	9
Ballarat Hospital	21	2	8.16	0.24 (0.03-0.88)	48.99 (13.56-404.49)	0
Bendigo Hospital	62	12	46.07	0.26 (0.13-0.46)	46.07 (26.37-89.15)	8
Eastern Health Integrated Renal Services	64	2	41.60	0.05 (0.01-0.17)	249.63 (69.10-2061.24)	3
Monash Medical Centre	176	22	118.65	0.19 (0.12-0.28)	64.72 (42.75-103.27)	40

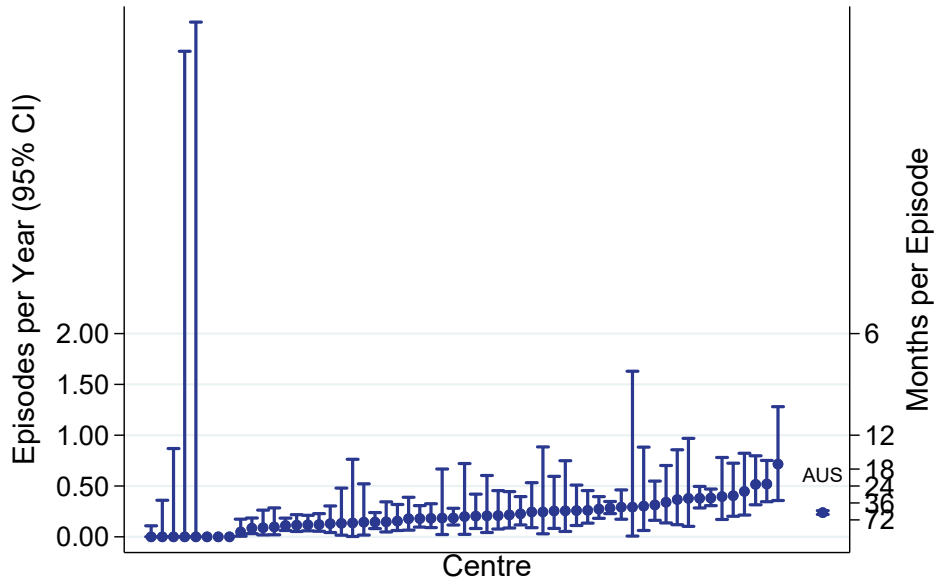
continued on next page

continued from previous page

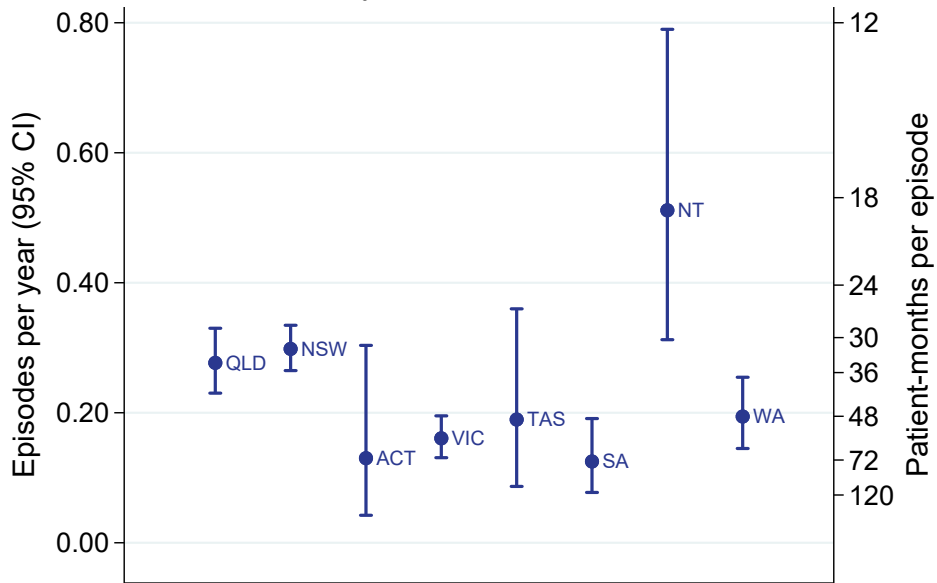
Centre	PD Patients	No of Episodes	Person Years	Rate (95% CI)	PM per Episode (95% CI)	2024 Episodes
Northern Health Service Melbourne	42	7	34.35	0.20 (0.08-0.42)	58.88 (28.58-146.45)	3
Peninsula Health Renal Services	1	0	0.77	0.00 (0.00-4.78)	. (2.51-.)	0
South Eastern Private Hospital Dialysis Centre	1	0	0.00	0.00 (0.00-1347.36)	. (0.01-.)	0
St Vincent's Hospital Melbourne	102	6	70.50	0.09 (0.03-0.19)	141.00 (64.78-384.23)	16
The Royal Melbourne Hospital	127	9	78.36	0.11 (0.05-0.22)	104.48 (55.04-228.48)	14
University Hospital Geelong Barwon Health	37	6	24.52	0.24 (0.09-0.53)	49.03 (22.53-133.62)	4
Western Health Service	143	15	103.59	0.14 (0.08-0.24)	82.88 (50.25-148.07)	14
Tasmania	67	9	47.48	0.19 (0.09-0.36)	63.30 (33.35-138.44)	13
Launceston General Hospital	46	7	32.41	0.22 (0.09-0.45)	55.56 (26.96-138.18)	11
Royal Hobart Hospital	21	2	15.07	0.13 (0.02-0.48)	90.41 (25.03-746.58)	2
South Australia	226	21	168.01	0.12 (0.08-0.19)	96.00 (62.81-155.09)	9
Central Northern Adelaide Renal Service	175	15	134.46	0.11 (0.06-0.18)	107.56 (65.22-192.19)	7
Central Adelaide Local Health Network	151	14	115.01	0.12 (0.07-0.20)	98.58 (58.75-180.31)	-
Northern Adelaide Local Health Network	24	1	19.45	0.05 (0.00-0.29)	233.36 (41.88-9217.36)	-
Flinders Medical Centre	51	6	33.55	0.18 (0.07-0.39)	67.10 (30.83-182.86)	2
Northern Territory	53	20	39.10	0.51 (0.31-0.79)	23.46 (15.19-38.41)	17
Alice Springs Hospital	1	0	0.37	0.00 (0.00-10.05)	. (1.19-.)	3
Royal Darwin Hospital	52	20	38.74	0.52 (0.32-0.80)	23.24 (15.05-38.05)	14
Western Australia	383	52	267.79	0.19 (0.15-0.25)	61.80 (47.13-82.75)	89
Fiona Stanley Hospital	134	11	93.05	0.12 (0.06-0.21)	101.51 (56.73-203.35)	24
Royal Perth Hospital	107	13	72.41	0.18 (0.10-0.31)	66.84 (39.09-125.54)	20
Sir Charles Gairdner Hospital	142	28	102.33	0.27 (0.18-0.40)	43.85 (30.34-66.00)	45

INTERIM

PD Peritonitis Rate, Adults
01 January 2025 - 31 December 2025



PD Peritonitis Rate, Adults
By Jurisdiction, 2025



1.2 Paediatric

This table presents the total number of peritonitis episodes and patient exposure in years by Centre. Patient totals, exposure and peritonitis episodes were determined using the hospital at which the patient was receiving treatment at the time. So, if a patient transferred units during the observation period, the subsequent exposure and peritonitis episodes were allocated to the new unit. Months per episode (PM per Episode) is also reported. This should be interpreted as the average number of months between episodes of peritonitis; it can not be calculated if the peritonitis rate is zero. The 2024 episodes are based on the 2024 analysis database and are provided to allow assessment of possible under-reporting. This is a particular issue with peritonitis reporting. Patients are included in this paediatric report if they were treated at a paediatric hospital. In rare cases when patients younger than 18 years are treated at an adult centre, they are included in the adult report. Any patients 18 years and older treated at a paediatric hospital are included in this report. Note that the 2022 International Society for Peritoneal Dialysis peritonitis guideline has a target that the overall peritonitis rate should be no more than 0.40 episodes per year at risk.

Centre	PD Patients	No of Episodes	Person Years	Rate (95% CI)	PM per Episode (95% CI)	2024 Episodes
Australia	76	24	47.56	0.50 (0.32-0.75)	23.78 (15.98-37.11)	14
Queensland	22	8	11.37	0.70 (0.30-1.39)	17.05 (8.65-39.50)	4
Child and Adolescent Renal Service	22	8	11.37	0.70 (0.30-1.39)	17.05 (8.65-39.50)	4
New South Wales	9	0	6.56	0.00 (0.00-0.56)	. (21.34-.)	1
Sydney Children's Hospital	7	0	5.08	0.00 (0.00-0.73)	. (16.52-.)	0
The Children's Hospital at Westmead	2	0	1.48	0.00 (0.00-2.49)	. (4.82-.)	1
Victoria	31	11	19.40	0.57 (0.28-1.01)	21.17 (11.83-42.40)	7
Monash Children's Centre	11	8	6.89	1.16 (0.50-2.29)	10.33 (5.24-23.93)	1
Royal Children's Hospital	20	3	12.51	0.24 (0.05-0.70)	50.06 (17.13-242.74)	6
South Australia	5	0	3.16	0.00 (0.00-1.17)	. (10.28-.)	1
Women's and Children's Hospital	5	0	3.16	0.00 (0.00-1.17)	. (10.28-.)	1
Western Australia	9	5	7.07	0.71 (0.23-1.65)	16.96 (7.27-52.23)	1
Perth Children's Hospital	9	5	7.07	0.71 (0.23-1.65)	16.96 (7.27-52.23)	1
New Zealand	13	3	8.07	0.37 (0.08-1.09)	32.30 (11.05-156.60)	3
Starship Children's Hospital	13	3	8.07	0.37 (0.08-1.09)	32.30 (11.05-156.60)	3

2 Dialysis Access Planning at Commencement of Dialysis

2.1 All Dialysis Access Planning

2.1.1 Adult

This table presents the numbers of patients beginning haemodialysis or peritoneal dialysis and the percentage starting with a permanent access (an AVF or AVG for haemodialysis and all peritoneal dialysis patients) during the observation window by Centre, where dialysis was the first kidney replacement therapy. Patients are excluded from this adult report if they were treated at a paediatric hospital. In rare cases when patients younger than 18 years are treated at an adult centre, they are included in this adult report. Any patients 18 years and older treated at a paediatric hospital are excluded from this report. Some Centres did not report type of first access for all new HD patients. The percent beginning with a permanent access is based on the number of patients with data available for first access. The number of new dialysis patients for 2024 from the analysis database is also provided to allow assessment of possible under-reporting. Finally, the total of Early Referrals (patients seen more than 3 months before first treatment) and the percentage of Early Referrals with a permanent access are also presented.

Centre	Dialysis Patients	AVF or AVG or PD	Vascular Catheter	Missing Access Data	2024 Dialysis Patients	% of AVF or AVG or PD (95 % CI)	Early Referral	% of Early Referrals with AVF or AVG or PD
Australia	3048	1574	1469	5	3353	52 (50-54)	2482	58 (56-60)
Queensland	576	281	295	0	713	49 (45-53)	471	56 (51-60)
Bundaberg Hospital	23	11	12	0	23	48 (27-69)	18	61 (36-83)
Cairns Hospital	59	28	31	0	74	47 (34-61)	46	57 (41-71)
Cairns Private Hospital	1	0	1	0	4	0 (0-98)	0	–
Chermside Dialysis Centre	7	5	2	0	6	71 (29-96)	7	71 (29-96)
Gold Coast Private Hospital	13	3	10	0	6	23 (5-54)	13	23 (5-54)
Gold Coast University Hospital	45	19	26	0	59	42 (28-58)	30	43 (25-63)
Henry Dalziel Dialysis Clinic - Greenslopes	31	11	20	0	24	35 (19-55)	31	35 (19-55)
Hervey Bay Hospital	9	4	5	0	24	44 (14-79)	6	33 (4-78)
Ipswich Hospital	29	13	16	0	32	45 (26-64)	24	50 (29-71)
John Flynn Private Hospital	8	2	6	0	5	25 (3-65)	8	25 (3-65)
Mackay Base Hospital	13	9	4	0	16	69 (39-91)	12	75 (43-95)
Mater Hospital, Brisbane	13	4	9	0	12	31 (9-61)	6	67 (22-96)
Mater Hospital, Townsville	6	5	1	0	5	83 (36-100)	5	100 (48-100)
Metro South Kidney and Transplant Services	92	49	43	0	133	53 (43-64)	73	60 (48-72)
<i>Logan Hospital</i>	<i>30</i>	<i>16</i>	<i>14</i>	<i>0</i>	<i>54</i>	<i>53 (34-72)</i>	<i>26</i>	<i>54 (33-73)</i>
<i>Princess Alexandra Hospital</i>	<i>57</i>	<i>32</i>	<i>25</i>	<i>0</i>	<i>72</i>	<i>56 (42-69)</i>	<i>42</i>	<i>69 (53-82)</i>

continued on next page

continued from previous page

Centre	Dialysis Patients	AVF or AVG or PD	Vascular Catheter	Missing Access Data	2024 Dialysis Patients	% of AVF or AVG or PD (95 % CI)	Early Referral	% of Early Referrals with AVF or AVG or PD
<i>Redlands Hospital</i>	5	1	4	0	7	20 (1-72)	5	20 (1-72)
Morayfield B.Braun Renal Care Centre	2	2	0	0	1	100 (16-100)	2	100 (16-100)
Nambour Selangor Private Hospital	2	2	0	0	2	100 (16-100)	1	100 (2-100)
North Lakes Dialysis Centre	2	0	2	0	10	0 (0-84)	2	0 (0-84)
Rockhampton Hospital	29	13	16	0	26	45 (26-64)	21	57 (34-78)
Royal Brisbane and Women's Hospital	57	30	27	0	73	53 (39-66)	47	64 (49-77)
St Andrew's Ipswich Private Hospital	11	4	7	0	10	36 (11-69)	10	40 (12-74)
St Andrew's Toowoomba B.Braun's Dialysis Clinic	3	3	0	0	9	100 (29-100)	3	100 (29-100)
Sunshine Coast University Hospital	32	16	16	0	31	50 (32-68)	27	59 (39-78)
Sunshine Coast University Private Hospital	4	2	2	0	4	50 (7-93)	3	67 (9-99)
The Wesley Hospital Brisbane	1	1	0	0	28	100 (2-100)	1	100 (2-100)
Toowoomba Hospital	37	23	14	0	28	62 (45-78)	30	73 (54-88)
Townsville University Hospital	47	22	25	0	61	47 (32-62)	45	49 (34-64)
New South Wales	872	481	388	3	934	55 (52-59)	713	63 (59-66)
Bathurst Base Hospital	2	1	1	0	1	50 (1-99)	2	50 (1-99)
Coffs Harbour Hospital	10	5	5	0	11	50 (19-81)	8	62 (24-91)
Concord Repatriation General Hospital	33	19	14	0	38	58 (39-75)	24	71 (49-87)
Dubbo Base Hospital	13	5	8	0	20	38 (14-68)	12	42 (15-72)
Gosford Hospital	41	22	19	0	39	54 (37-69)	35	60 (42-76)
Gregory Hills B.Braun Renal Care Centre	3	1	2	0	4	33 (1-91)	3	33 (1-91)
John Hunter Hospital	59	35	24	0	68	59 (46-72)	52	67 (53-80)
Lismore Base Hospital	23	17	6	0	21	74 (52-90)	18	89 (65-99)
Liverpool Private Dialysis Centre	3	3	0	0	2	100 (29-100)	3	100 (29-100)
Manning Rural Hospital	14	8	6	0	11	57 (29-82)	11	73 (39-94)
Mater Hospital, North Sydney	1	0	1	0	5	0 (0-98)	1	0 (0-98)
Mayo Private Hospital	2	1	1	0	3	50 (1-99)	1	100 (2-100)
Newcastle Dialysis Centre	3	3	0	0	2	100 (29-100)	3	100 (29-100)
Orange Health Service	10	6	4	0	17	60 (26-88)	9	67 (30-93)
Port Macquarie Base Hospital	12	10	2	0	17	83 (52-98)	12	83 (52-98)
Royal North Shore Hospital	53	32	19	2	58	63 (48-76)	45	62 (47-76)
Royal Prince Alfred Hospital	25	9	15	1	41	38 (19-59)	20	45 (23-68)

continued on next page

continued from previous page

Centre	Dialysis Patients	AVF or AVG or PD	Vascular Catheter	Missing Access Data	2024 Dialysis Patients	% of AVF or AVG or PD (95 % CI)	Early Referral	% of Early Referrals with AVF or AVG or PD
South West Sydney Renal Service	171	84	87	0	166	49 (41-57)	146	50 (42-58)
St George Hospital	39	23	16	0	40	59 (42-74)	34	65 (46-80)
St Vincent's Hospital Sydney	27	9	18	0	23	33 (17-54)	13	69 (39-91)
St Vincent's Lismore Private Dialysis Centre	4	2	2	0	5	50 (7-93)	4	50 (7-93)
Sydney Adventist Hospital	13	5	8	0	6	38 (14-68)	13	38 (14-68)
Tamworth Hospital	22	10	12	0	27	45 (24-68)	14	64 (35-87)
The Prince of Wales Hospital	15	12	3	0	18	80 (52-96)	14	79 (49-95)
Tweed Valley Hospital	15	4	11	0	15	27 (8-55)	13	23 (5-54)
Wagga Wagga Base Hospital	19	5	14	0	35	26 (9-51)	13	31 (9-61)
Western Sydney Renal Health Services	195	126	69	0	209	65 (57-71)	159	73 (65-80)
<i>Nepean Hospital</i>	40	24	16	0	52	60 (43-75)	31	71 (52-86)
<i>Westmead Hospital</i>	155	102	53	0	157	66 (58-73)	128	73 (65-81)
Wollongong Hospital	45	24	21	0	32	53 (38-68)	31	74 (55-88)
Australian Capital Territory	59	26	33	0	75	44 (31-58)	53	49 (35-63)
Access Nephrology	1	0	1	0	9	0 (0-98)	0	-
Canberra Hospital	58	26	32	0	66	45 (32-58)	53	49 (35-63)
Victoria	753	412	340	1	852	55 (51-58)	619	62 (58-66)
Alfred Hospital	51	33	18	0	69	65 (50-78)	42	76 (61-88)
Austin Hospital	44	16	28	0	51	36 (22-52)	43	35 (21-51)
Ballarat Hospital	16	11	5	0	0	69 (41-89)	16	69 (41-89)
Bendigo Hospital	22	11	11	0	34	50 (28-72)	19	53 (29-76)
Diamond Valley B.Braun Renal Care Centre	1	1	0	0	3	100 (2-100)	0	-
Eastern Health Integrated Renal Services	60	36	24	0	57	60 (47-72)	54	63 (49-76)
Epworth Eastern Hospital	5	3	2	0	10	60 (15-95)	4	75 (19-99)
Epworth Richmond Hospital	9	3	6	0	14	33 (7-70)	8	38 (9-76)
Malvern Dialysis Centre	14	4	10	0	15	29 (8-58)	5	80 (28-99)
Monash Medical Centre	165	92	72	1	185	56 (48-64)	141	62 (53-70)
North Melbourne B.Braun Renal Care Centre	1	1	0	0	0	100 (2-100)	0	-
Northern Health Service Melbourne	41	19	22	0	60	46 (31-63)	33	55 (36-72)
Peninsula Health Renal Services	19	1	18	0	16	5 (0-26)	11	9 (0-41)

continued on next page

continued from previous page

Centre	Dialysis Patients	AVF or AVG or PD	Vascular Catheter	Missing Access Data	2024 Dialysis Patients	% of AVF or AVG or PD (95 % CI)	Early Referral	% of Early Referrals with AVF or AVG or PD
South Eastern Private Hospital Dialysis Centre	4	2	2	0	4	50 (7-93)	0	-
St Vincent's Hospital Melbourne	57	35	22	0	62	61 (48-74)	45	71 (56-84)
The Royal Melbourne Hospital	98	66	32	0	124	67 (57-76)	83	75 (64-84)
University Hospital Geelong Barwon Health	35	22	13	0	39	63 (45-79)	28	75 (55-89)
Western Health Service	111	56	55	0	105	50 (41-60)	87	57 (46-68)
Tasmania	54	32	22	0	62	59 (45-72)	48	65 (49-78)
Launceston General Hospital	26	16	10	0	28	62 (41-80)	20	75 (51-91)
Royal Hobart Hospital	28	16	12	0	34	57 (37-76)	28	57 (37-76)
South Australia	214	111	103	0	231	52 (45-59)	190	58 (51-65)
Central Northern Adelaide Renal Service	168	90	78	0	177	54 (46-61)	152	59 (50-66)
<i>Central Adelaide Local Health Network</i>	132	70	62	0	-	53 (44-62)	117	59 (50-68)
<i>Northern Adelaide Local Health Network</i>	36	20	16	0	-	56 (38-72)	35	57 (39-74)
Flinders Medical Centre	46	21	25	0	54	46 (31-61)	38	55 (38-71)
Northern Territory	142	42	100	0	110	30 (22-38)	124	34 (26-43)
Alice Springs Hospital	60	12	48	0	51	20 (11-32)	54	22 (12-36)
Royal Darwin Hospital	82	30	52	0	59	37 (26-48)	70	43 (31-55)
Western Australia	378	189	188	1	376	50 (45-55)	264	56 (50-62)
Fiona Stanley Hospital	165	78	87	0	140	47 (39-55)	92	60 (49-70)
Royal Perth Hospital	132	56	76	0	141	42 (34-51)	118	46 (37-55)
Sir Charles Gairdner Hospital	81	55	25	1	95	69 (57-79)	54	72 (58-84)
New Zealand	677	293	384	0	723	43 (40-47)	549	48 (44-53)
Auckland City Hospital	62	20	42	0	82	32 (21-45)	54	35 (23-49)
Bay of Plenty Renal Service	2	2	0	0	2	100 (16-100)	2	100 (16-100)
Christchurch Hospital	53	34	19	0	36	64 (50-77)	44	66 (50-80)
Dunedin Hospital	19	17	2	0	24	89 (67-99)	18	94 (73-100)
Hawkes Bay Hospital	29	15	14	0	21	52 (33-71)	23	57 (34-77)
Middlemore Hospital	151	57	94	0	169	38 (30-46)	113	44 (35-54)

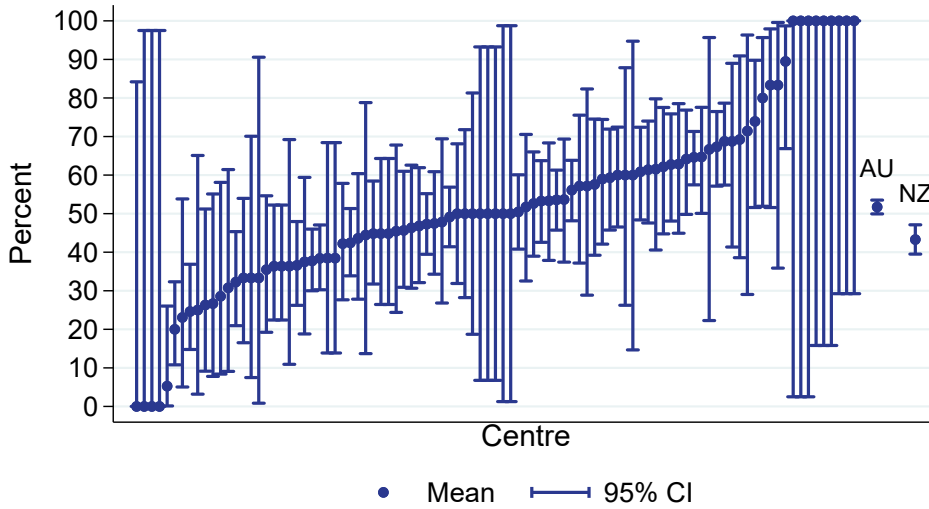
continued on next page

continued from previous page

Centre	Dialysis Patients	AVF or AVG or PD	Vascular Catheter	Missing Access Data	2024 Dialysis Patients	% of AVF or AVG or PD (95 % CI)	Early Referral	% of Early Referrals with AVF or AVG or PD
Palmerston North Hospital	39	17	22	0	33	44 (28-60)	25	60 (39-79)
Taranaki Hospital	6	4	2	0	13	67 (22-96)	5	80 (28-99)
Waikato Hospital	138	53	85	0	146	38 (30-47)	111	43 (34-53)
Waitemata Renal Service	65	16	49	0	78	25 (15-37)	56	21 (12-34)
Wellington Regional Hospital	69	42	27	0	81	61 (48-72)	60	68 (55-80)
Whangarei Hospital	44	16	28	0	38	36 (22-52)	38	42 (26-59)

All dialysis access planning (AVF/AVG or PD)
 % of all dialysis starts, Adults

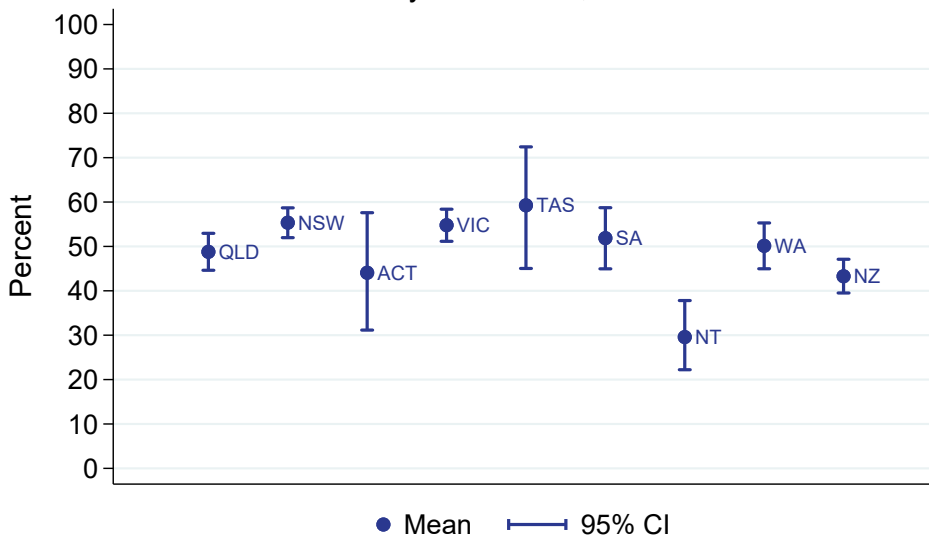
01 January 2025 - 31 December 2025



All adult dialysis starts including late referred patients

All dialysis access planning (AVF/AVG or PD)
 % of all dialysis starts, Adults

By Jurisdiction, 2025



2.1.2 Paediatric

This table presents the numbers of patients beginning haemodialysis or peritoneal dialysis and the percentage starting with a permanent access (an AVF or AVG for haemodialysis and all peritoneal dialysis patients) during the observation window by Centre, where dialysis was the first kidney replacement therapy. Patients are included in this paediatric report if they were treated at a paediatric hospital. In rare cases when patients younger than 18 years are treated at an adult centre, they are included in the adult report. Any patients 18 years and older treated at a paediatric hospital are included in this report. The number of new dialysis patients for 2024 from the analysis database is also provided to allow assessment of possible under-reporting. Finally, the total of Early Referrals (patients seen more than 3 months before first treatment) and the percentage of Early Referrals with a permanent access are also presented.

Centre	Dialysis Patients	AVF or AVG or PD	Vascular Catheter	Missing Access Data	2024 Dialysis Patients	% of AVF or AVG or PD (95 % CI)	Early Referral	% of Early Referrals with AVF or AVG or PD
Australia	32	24	8	0	33	75 (57-89)	21	81 (58-95)
Queensland	5	2	3	0	8	40 (5-85)	3	67 (9-99)
Child and Adolescent Renal Service	5	2	3	0	8	40 (5-85)	3	67 (9-99)
New South Wales	6	4	2	0	6	67 (22-96)	5	60 (15-95)
Sydney Children's Hospital	3	3	0	0	2	100 (29-100)	3	100 (29-100)
The Children's Hospital at Westmead	3	1	2	0	4	33 (1-91)	2	0 (0-84)
Victoria	12	11	1	0	15	92 (62-100)	7	100 (59-100)
Monash Children's Centre	4	3	1	0	5	75 (19-99)	3	100 (29-100)
Royal Children's Hospital	8	8	0	0	10	100 (63-100)	4	100 (40-100)
South Australia	2	1	1	0	3	50 (1-99)	1	100 (2-100)
Women's and Children's Hospital	2	1	1	0	3	50 (1-99)	1	100 (2-100)
Western Australia	7	6	1	0	1	86 (42-100)	5	80 (28-99)
Perth Children's Hospital	7	6	1	0	1	86 (42-100)	5	80 (28-99)
New Zealand	9	8	1	0	3	89 (52-100)	8	88 (47-100)
Starship Children's Hospital	9	8	1	0	3	89 (52-100)	8	88 (47-100)

2.2 Vascular Access at First Haemodialysis

2.2.1 Adult

This table presents the numbers of patients beginning haemodialysis and the percentage starting with an AVF or AVG during the observation window by Centre, where HD was the first kidney replacement therapy. Patients are excluded from this adult report if they were treated at a paediatric hospital. In rare cases when patients younger than 18 years are treated at an adult centre, they are included in this adult report. Any patients 18 years and older treated at a paediatric hospital are excluded from this report. Some Centres did not report type of first access for all new HD patients. The percent beginning with AVF or AVG is based on the number of patients with data available for first access. The number of new HD patients for 2024 from the analysis database is also provided to allow assessment of possible under-reporting. Finally, the total of Early Referrals (patients seen more than 3 months before first treatment) and the percentage of Early Referrals with AVF or AVG are also presented.

Centre	HD Patients	AVF or AVG	Vascular Catheter	Missing Access Data	2024 HD Patients	% of AVF or AVG (95 % CI)	Early Referral	% of Early Referrals with AVF or AVG
Australia	2314	840	1469	5	2994	36 (34-38)	1811	43 (41-45)
Queensland	464	169	295	0	548	36 (32-41)	366	43 (38-48)
Bundaberg Hospital	19	7	12	0	20	37 (16-62)	14	50 (23-77)
Cairns Hospital	48	17	31	0	64	35 (22-51)	36	44 (28-62)
Cairns Private Hospital	1	0	1	0	4	0 (0-98)	0	-
Chermside Dialysis Centre	7	5	2	0	6	71 (29-96)	7	71 (29-96)
Gold Coast Private Hospital	13	3	10	0	6	23 (5-54)	13	23 (5-54)
Gold Coast University Hospital	41	15	26	0	48	37 (22-53)	28	39 (22-59)
Henry Dalziel Dialysis Clinic - Greenslopes	31	11	20	0	24	35 (19-55)	31	35 (19-55)
Hervey Bay Hospital	8	3	5	0	17	38 (9-76)	5	20 (1-72)
Ipswich Hospital	21	5	16	0	23	24 (8-47)	16	25 (7-52)
John Flynn Private Hospital	8	2	6	0	5	25 (3-65)	8	25 (3-65)
Mackay Base Hospital	12	8	4	0	13	67 (35-90)	11	73 (39-94)
Mater Hospital, Brisbane	13	4	9	0	12	31 (9-61)	6	67 (22-96)
Mater Hospital, Townsville	6	5	1	0	5	83 (36-100)	5	100 (48-100)
Metro South Kidney and Transplant Services	62	19	43	0	79	31 (20-44)	46	37 (23-52)
<i>Logan Hospital</i>	18	4	14	0	31	22 (6-48)	15	20 (4-48)
<i>Princess Alexandra Hospital</i>	39	14	25	0	41	36 (21-53)	26	50 (30-70)
<i>Redlands Hospital</i>	5	1	4	0	7	20 (1-72)	5	20 (1-72)
Morayfield B.Braun Renal Care Centre	2	2	0	0	1	100 (16-100)	2	100 (16-100)
Nambour Selangor Private Hospital	2	2	0	0	2	100 (16-100)	1	100 (2-100)

continued on next page

continued from previous page

Centre	HD Patients	AVF or AVG	Vascular Catheter	Missing Access Data	2024 HD Patients	% of AVF or AVG (95 % CI)	Early Referral	% of Early Referrals with AVF or AVG
North Lakes Dialysis Centre	2	0	2	0	10	0 (0-84)	2	0 (0-84)
Rockhampton Hospital	24	8	16	0	19	33 (16-55)	16	44 (20-70)
Royal Brisbane and Women's Hospital	35	8	27	0	44	23 (10-40)	25	32 (15-54)
St Andrew's Ipswich Private Hospital	11	4	7	0	10	36 (11-69)	10	40 (12-74)
St Andrew's Toowoomba B.Braun's Dialysis Clinic	3	3	0	0	9	100 (29-100)	3	100 (29-100)
Sunshine Coast University Hospital	29	13	16	0	22	45 (26-64)	24	54 (33-74)
Sunshine Coast University Private Hospital	4	2	2	0	4	50 (7-93)	3	67 (9-99)
The Wesley Hospital Brisbane	1	1	0	0	28	100 (2-100)	1	100 (2-100)
Toowoomba Hospital	19	5	14	0	17	26 (9-51)	13	38 (14-68)
Townsville University Hospital	42	17	25	0	49	40 (26-57)	40	42 (27-59)
New South Wales	592	201	388	3	675	34 (30-38)	458	42 (37-46)
Bathurst Base Hospital	2	1	1	0	1	50 (1-99)	2	50 (1-99)
Coffs Harbour Hospital	10	5	5	0	10	50 (19-81)	8	62 (24-91)
Concord Repatriation General Hospital	22	8	14	0	28	36 (17-59)	13	46 (19-75)
Dubbo Base Hospital	13	5	8	0	17	38 (14-68)	12	42 (15-72)
Gosford Hospital	33	14	19	0	33	42 (25-61)	27	48 (29-68)
Gregory Hills B.Braun Renal Care Centre	3	1	2	0	4	33 (1-91)	3	33 (1-91)
John Hunter Hospital	43	19	24	0	47	44 (29-60)	36	53 (35-70)
Lismore Base Hospital	16	10	6	0	20	62 (35-85)	12	83 (52-98)
Liverpool Private Dialysis Centre	3	3	0	0	2	100 (29-100)	3	100 (29-100)
Manning Rural Hospital	13	7	6	0	9	54 (25-81)	10	70 (35-93)
Mater Hospital, North Sydney	1	0	1	0	5	0 (0-98)	1	0 (0-98)
Mayo Private Hospital	2	1	1	0	3	50 (1-99)	1	100 (2-100)
Newcastle Dialysis Centre	3	3	0	0	2	100 (29-100)	3	100 (29-100)
Orange Health Service	7	3	4	0	16	43 (10-82)	6	50 (12-88)
Port Macquarie Base Hospital	12	10	2	0	17	83 (52-98)	12	83 (52-98)
Royal North Shore Hospital	34	13	19	2	41	41 (24-59)	30	43 (25-63)
Royal Prince Alfred Hospital	19	3	15	1	35	17 (4-41)	14	21 (5-51)
South West Sydney Renal Service	101	14	87	0	104	14 (8-22)	86	15 (8-24)
St George Hospital	30	14	16	0	25	47 (28-66)	26	54 (33-73)
St Vincent's Hospital Sydney	22	4	18	0	21	18 (5-40)	8	50 (16-84)

continued on next page

continued from previous page

Centre	HD Patients	AVF or AVG	Vascular Catheter	Missing Access Data	2024 HD Patients	% of AVF or AVG (95 % CI)	Early Referral	% of Early Referrals with AVF or AVG
St Vincent's Lismore Private Dialysis Centre	4	2	2	0	5	50 (7-93)	4	50 (7-93)
Sydney Adventist Hospital	13	5	8	0	6	38 (14-68)	13	38 (14-68)
Tamworth Hospital	18	6	12	0	21	33 (13-59)	10	50 (19-81)
The Prince of Wales Hospital	4	1	3	0	10	25 (1-81)	4	25 (1-81)
Tweed Valley Hospital	13	2	11	0	11	15 (2-45)	11	9 (0-41)
Wagga Wagga Base Hospital	19	5	14	0	31	26 (9-51)	13	31 (9-61)
Western Sydney Renal Health Services	105	36	69	0	129	34 (25-44)	77	44 (33-56)
<i>Nepean Hospital</i>	30	14	16	0	42	47 (28-66)	22	59 (36-79)
<i>Westmead Hospital</i>	75	22	53	0	87	29 (19-41)	55	38 (25-52)
Wollongong Hospital	27	6	21	0	22	22 (9-42)	13	38 (14-68)
Australian Capital Territory	52	19	33	0	60	37 (24-51)	46	41 (27-57)
Access Nephrology	1	0	1	0	9	0 (0-98)	0	-
Canberra Hospital	51	19	32	0	51	37 (24-52)	46	41 (27-57)
Victoria	547	206	340	1	605	38 (34-42)	435	46 (41-51)
Alfred Hospital	22	4	18	0	42	18 (5-40)	14	29 (8-58)
Austin Hospital	37	9	28	0	42	24 (12-41)	37	24 (12-41)
Ballarat Hospital	11	6	5	0	0	55 (23-83)	11	55 (23-83)
Bendigo Hospital	11	0	11	0	19	0 (0-28)	9	0 (0-34)
Diamond Valley B.Braun Renal Care Centre	1	1	0	0	3	100 (2-100)	0	-
Eastern Health Integrated Renal Services	44	20	24	0	41	45 (30-61)	40	50 (34-66)
Epworth Eastern Hospital	5	3	2	0	10	60 (15-95)	4	75 (19-99)
Epworth Richmond Hospital	9	3	6	0	14	33 (7-70)	8	38 (9-76)
Malvern Dialysis Centre	14	4	10	0	15	29 (8-58)	5	80 (28-99)
Monash Medical Centre	133	60	72	1	128	45 (37-54)	114	53 (43-62)
North Melbourne B.Braun Renal Care Centre	1	1	0	0	0	100 (2-100)	0	-
Northern Health Service Melbourne	36	14	22	0	47	39 (23-57)	29	48 (29-67)
Peninsula Health Renal Services	19	1	18	0	16	5 (0-26)	11	9 (0-41)
South Eastern Private Hospital Dialysis Centre	4	2	2	0	4	50 (7-93)	0	-
St Vincent's Hospital Melbourne	35	13	22	0	30	37 (21-55)	26	50 (30-70)
The Royal Melbourne Hospital	63	31	32	0	84	49 (36-62)	52	60 (45-73)

continued on next page

continued from previous page

Centre	HD Patients	AVF or AVG	Vascular Catheter	Missing Access Data	2024 HD Patients	% of AVF or AVG (95 % CI)	Early Referral	% of Early Referrals with AVF or AVG
University Hospital Geelong Barwon Health	26	13	13	0	29	50 (30-70)	20	65 (41-85)
Western Health Service	76	21	55	0	77	28 (18-39)	55	33 (21-47)
Tasmania	43	21	22	0	46	49 (33-65)	37	54 (37-71)
Launceston General Hospital	18	8	10	0	18	44 (22-69)	12	58 (28-85)
Royal Hobart Hospital	25	13	12	0	28	52 (31-72)	25	52 (31-72)
South Australia	182	79	103	0	177	43 (36-51)	158	49 (41-57)
Central Northern Adelaide Renal Service	147	69	78	0	135	47 (39-55)	131	52 (43-61)
Central Adelaide Local Health Network	112	50	62	0	-	45 (35-54)	97	51 (40-61)
Northern Adelaide Local Health Network	35	19	16	0	-	54 (37-71)	34	56 (38-73)
Flinders Medical Centre	35	10	25	0	42	29 (15-46)	27	37 (19-58)
Northern Territory	131	31	100	0	101	24 (17-32)	113	27 (19-37)
Alice Springs Hospital	60	12	48	0	51	20 (11-32)	54	22 (12-36)
Royal Darwin Hospital	71	19	52	0	50	27 (17-39)	59	32 (21-46)
Western Australia	303	114	188	1	271	38 (32-43)	198	41 (34-49)
Fiona Stanley Hospital	140	53	87	0	104	38 (30-46)	68	46 (33-58)
Royal Perth Hospital	113	37	76	0	107	33 (24-42)	100	36 (27-46)
Sir Charles Gairdner Hospital	50	24	25	1	60	49 (34-64)	30	50 (31-69)
New Zealand	453	69	384	0	511	15 (12-19)	343	17 (14-22)
Auckland City Hospital	42	0	42	0	64	0 (0-8)	35	0 (0-10)
Christchurch Hospital	25	6	19	0	17	24 (9-45)	21	29 (11-52)
Dunedin Hospital	7	5	2	0	17	71 (29-96)	6	83 (36-100)
Hawkes Bay Hospital	16	2	14	0	17	12 (2-38)	12	17 (2-48)
Middlemore Hospital	111	17	94	0	132	15 (9-23)	75	16 (9-26)
Palmerston North Hospital	27	5	22	0	29	19 (6-38)	14	29 (8-58)
Taranaki Hospital	4	2	2	0	5	50 (7-93)	3	67 (9-99)
Waikato Hospital	90	5	85	0	99	6 (2-12)	68	7 (2-16)
Waitemata Renal Service	59	10	49	0	58	17 (8-29)	51	14 (6-26)

continued on next page

continued from previous page

Centre	HD Patients	AVF or AVG	Vascular Catheter	Missing Access Data	2024 HD Patients	% of AVF or AVG (95 % CI)	Early Referral	% of Early Referrals with AVF or AVG
Wellington Regional Hospital	39	12	27	0	43	31 (17-48)	31	39 (22-58)
Whangarei Hospital	33	5	28	0	29	15 (5-32)	27	19 (6-38)

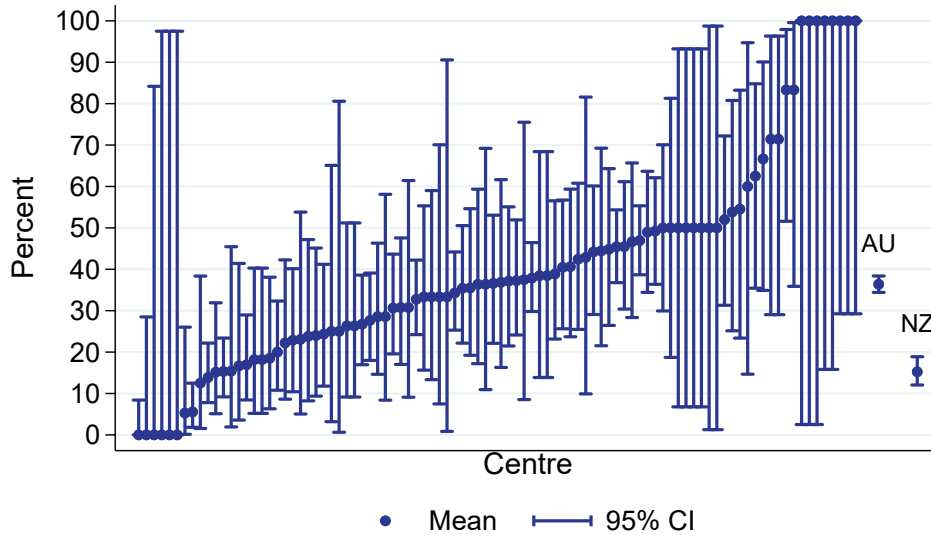
INTERIM

The following hospitals did not report any new start haemodialysis patients between 01 January 2025 and 31 December 2025:

State	Hospital
QLD	Pindara Renal Unit Torres & Cape Kidney Health
VIC	Forest Hill Dialysis Centre Sunshine Private Dialysis Centre Fresenius
NZ	Bay of Plenty Renal Service

Vascular access at first HD (AVF/AVG) % of all HD starts, Adults

01 January 2025 - 31 December 2025



2.2.2 Paediatric

This table presents the numbers of patients beginning haemodialysis and the percentage starting with an AVF or AVG during the observation window by Centre, where HD was the first kidney replacement therapy. Patients are included in this paediatric report if they were treated at a paediatric hospital. In rare cases when patients younger than 18 years are treated at an adult centre, they are included in the adult report. Any patients 18 years and older treated at a paediatric hospital are included in this report. Some Centres did not report type of first access for all new HD patients. The percent beginning with AVF or AVG is based on the number of patients with data available for first access. The number of new HD patients for 2024 from the analysis database is also provided to allow assessment of possible under-reporting. Finally, the total of Early Referrals (patients seen more than 3 months before first treatment) and the percentage of Early Referrals with AVF or AVG are also presented.

Centre	HD Patients	AVF or AVG	Vascular Catheter	Missing Access Data	2024 HD Patients	% of AVF or AVG (95 % CI)	Early Referral	% of Early Referrals with AVF or AVG
Australia	8	0	8	0	12	0 (0-37)	4	0 (0-60)
Queensland Child and Adolescent Renal Service	3 3	0 0	3 3	2 0	1 1	0 (0-98) 0 (0-71)	1 1	0 (0-98) 0 (0-98)
New South Wales The Children's Hospital at Westmead	2 2	0 0	2 2	1 0	4 4	0 (0-98) 0 (0-84)	2 2	0 (0-84) 0 (0-84)
Victoria Monash Children's Centre	1 1	0 0	1 1	0 0	6 2	0 (0-98) 0 (0-98)	0 0	- -
South Australia Women's and Children's Hospital	1 1	0 0	1 1	0 0	0 0	0 (0-98) 0 (0-98)	0 0	- -
Western Australia Perth Children's Hospital	1 1	0 0	1 1	0 0	1 1	0 (0-98) 0 (0-98)	1 1	0 (0-98) 0 (0-98)
New Zealand Starship Children's Hospital	1 1	0 0	1 1	0 0	0 0	0 (0-98) 0 (0-98)	1 1	0 (0-98) 0 (0-98)

2.3 HD Vascular Access Planning

2.3.1 Adult

This table presents the numbers of patients on haemodialysis at day 90 and the percentage starting haemodialysis with a permanent vascular access (an AVF or AVG) during the observation window by Centre. Modality changes of less than 30 days are ignored for the determination of modality at day 90. Patients are excluded from this adult report if they were treated at a paediatric hospital. In rare cases when patients younger than 18 years are treated at an adult centre, they are included in this adult report. Any patients 18 years and older treated at a paediatric hospital are excluded from this report. Some Centres did not report type of first access for all new HD patients. The percent beginning with a permanent access is based on the number of patients with data available for first access. The number of HD patients at day 90 for 2024 is also provided to allow assessment of possible under-reporting. Finally, the total of Early Referrals (patients seen more than 3 months before first treatment) and the percentage of Early Referrals with a permanent access are also presented.

Centre	HD Patients	AVF or AVG	Vascular Catheter	Missing Access Data	2024 HD Patients	% of AVF or AVG (95 % CI)	Early Referral	% of Early Referrals with AVF or AVG
Australia	2200	840	1355	5	2288	38 (36-40)	1760	45 (42-47)
Queensland	457	183	274	0	515	40 (36-45)	368	47 (42-53)
Bundaberg Hospital	21	11	10	0	12	52 (30-74)	16	69 (41-89)
Cairns Hospital	50	24	26	0	60	48 (34-63)	41	59 (42-74)
Cairns Private Hospital	1	0	1	0	4	0 (0-98)	0	–
Chermside Dialysis Centre	8	6	2	0	8	75 (35-97)	8	75 (35-97)
Gold Coast Private Hospital	12	3	9	0	3	25 (5-57)	11	27 (6-61)
Gold Coast University Hospital	41	12	29	0	41	29 (16-46)	28	32 (16-52)
Henry Dalziel Dialysis Clinic - Greenslopes	22	11	11	0	22	50 (28-72)	22	50 (28-72)
Hervey Bay Hospital	11	3	8	0	13	27 (6-61)	8	25 (3-65)
Ipswich Hospital	20	4	16	0	21	20 (6-44)	15	20 (4-48)
John Flynn Private Hospital	9	3	6	0	4	33 (7-70)	9	33 (7-70)
Mackay Base Hospital	11	7	4	0	12	64 (31-89)	10	70 (35-93)
Mater Hospital, Brisbane	14	6	8	0	12	43 (18-71)	8	75 (35-97)
Mater Hospital, Townsville	5	4	1	0	5	80 (28-99)	5	80 (28-99)
Metro South Kidney and Transplant Services	62	22	40	0	82	35 (24-49)	47	43 (28-58)
<i>Logan Hospital</i>	<i>19</i>	<i>5</i>	<i>14</i>	<i>0</i>	<i>29</i>	<i>26 (9-51)</i>	<i>16</i>	<i>25 (7-52)</i>
<i>Princess Alexandra Hospital</i>	<i>38</i>	<i>16</i>	<i>22</i>	<i>0</i>	<i>46</i>	<i>42 (26-59)</i>	<i>26</i>	<i>58 (37-77)</i>
<i>Redlands Hospital</i>	<i>5</i>	<i>1</i>	<i>4</i>	<i>0</i>	<i>7</i>	<i>20 (1-72)</i>	<i>5</i>	<i>20 (1-72)</i>
Morayfield B.Braun Renal Care Centre	3	3	0	0	0	100 (29-100)	3	100 (29-100)
Nambour Selangor Private Hospital	2	2	0	0	3	100 (16-100)	1	100 (2-100)

continued on next page

continued from previous page

Centre	HD Patients	AVF or AVG	Vascular Catheter	Missing Access Data	2024 HD Patients	% of AVF or AVG (95 % CI)	Early Referral	% of Early Referrals with AVF or AVG
North Lakes Dialysis Centre	4	2	2	0	12	50 (7-93)	4	50 (7-93)
Pindara Renal Unit	3	3	0	0	4	100 (29-100)	3	100 (29-100)
Rockhampton Hospital	23	7	16	0	17	30 (13-53)	17	35 (14-62)
Royal Brisbane and Women's Hospital	36	11	25	0	43	31 (16-48)	28	39 (22-59)
St Andrew's Ipswich Private Hospital	10	5	5	0	11	50 (19-81)	9	56 (21-86)
St Andrew's Toowoomba B.Braun's Dialysis Clinic	3	2	1	0	8	67 (9-99)	3	67 (9-99)
Sunshine Coast University Hospital	29	13	16	0	32	45 (26-64)	24	54 (33-74)
Sunshine Coast University Private Hospital	3	2	1	0	3	67 (9-99)	2	100 (16-100)
The Wesley Hospital Brisbane	4	3	1	0	23	75 (19-99)	4	75 (19-99)
Toowoomba Hospital	13	4	9	0	19	31 (9-61)	8	50 (16-84)
Townsville University Hospital	37	10	27	0	40	27 (14-44)	34	29 (15-47)
New South Wales	566	194	370	2	601	34 (30-38)	442	41 (36-45)
Bathurst Base Hospital	2	1	1	0	1	50 (1-99)	2	50 (1-99)
Coffs Harbour Hospital	9	3	6	0	14	33 (7-70)	7	43 (10-82)
Concord Repatriation General Hospital	22	6	16	0	20	27 (11-50)	13	38 (14-68)
Dubbo Base Hospital	16	5	11	0	16	31 (11-59)	13	38 (14-68)
Gosford Hospital	32	16	16	0	32	50 (32-68)	27	56 (35-75)
Gregory Hills B.Braun Renal Care Centre	3	0	3	0	4	0 (0-71)	3	0 (0-71)
John Hunter Hospital	51	20	31	0	30	39 (26-54)	43	47 (31-62)
Lismore Base Hospital	18	11	7	0	16	61 (36-83)	16	69 (41-89)
Liverpool Private Dialysis Centre	3	2	1	0	2	67 (9-99)	3	67 (9-99)
Manning Rural Hospital	9	4	5	0	10	44 (14-79)	6	67 (22-96)
Mater Hospital, North Sydney	3	1	2	0	7	33 (1-91)	3	33 (1-91)
Mayo Private Hospital	1	1	0	0	4	100 (2-100)	1	100 (2-100)
Newcastle Dialysis Centre	3	3	0	0	3	100 (29-100)	3	100 (29-100)
Orange Health Service	7	3	4	0	17	43 (10-82)	6	50 (12-88)
Port Macquarie Base Hospital	10	8	2	0	13	80 (44-97)	10	80 (44-97)
Royal North Shore Hospital	35	14	20	1	44	41 (25-59)	30	47 (28-66)
Royal Prince Alfred Hospital	19	4	15	0	34	21 (6-46)	14	29 (8-58)
South West Sydney Renal Service	76	10	65	1	83	13 (7-23)	65	14 (7-25)
St George Hospital	24	9	15	0	25	38 (19-59)	21	43 (22-66)

continued on next page

continued from previous page

Centre	HD Patients	AVF or AVG	Vascular Catheter	Missing Access Data	2024 HD Patients	% of AVF or AVG (95 % CI)	Early Referral	% of Early Referrals with AVF or AVG
St Vincent's Hospital Sydney	20	3	17	0	16	15 (3-38)	5	60 (15-95)
St Vincent's Lismore Private Dialysis Centre	3	2	1	0	5	67 (9-99)	3	67 (9-99)
Sydney Adventist Hospital	13	5	8	0	8	38 (14-68)	13	38 (14-68)
Tamworth Hospital	20	10	10	0	21	50 (27-73)	13	54 (25-81)
The Prince of Wales Hospital	9	3	6	0	10	33 (7-70)	9	33 (7-70)
Tweed Valley Hospital	10	1	9	0	10	10 (0-45)	10	10 (0-45)
Wagga Wagga Base Hospital	17	6	11	0	28	35 (14-62)	11	27 (6-61)
Western Sydney Renal Health Services	103	36	67	0	105	35 (26-45)	74	43 (32-55)
<i>Nepean Hospital</i>	35	14	21	0	33	40 (24-58)	25	52 (31-72)
<i>Westmead Hospital</i>	68	22	46	0	72	32 (22-45)	49	39 (25-54)
Wollongong Hospital	28	7	21	0	23	25 (11-45)	18	33 (13-59)
Australian Capital Territory	58	22	36	0	48	38 (26-52)	54	41 (28-55)
Access Nephrology	3	2	1	0	10	67 (9-99)	2	100 (16-100)
Canberra Hospital	55	20	35	0	38	36 (24-50)	52	38 (25-53)
Victoria	532	215	316	1	578	40 (36-45)	435	48 (43-53)
Alfred Hospital	26	4	21	1	42	16 (5-36)	19	21 (6-46)
Austin Hospital	36	12	24	0	49	33 (19-51)	36	33 (19-51)
Ballarat Hospital	4	3	1	0	0	75 (19-99)	4	75 (19-99)
Bendigo Hospital	13	1	12	0	17	8 (0-36)	10	10 (0-45)
Diamond Valley B.Braun Renal Care Centre	2	2	0	0	2	100 (16-100)	1	100 (2-100)
Eastern Health Integrated Renal Services	40	23	17	0	36	58 (41-73)	40	58 (41-73)
Epworth Eastern Hospital	3	1	2	0	10	33 (1-91)	3	33 (1-91)
Epworth Richmond Hospital	11	5	6	0	14	45 (17-77)	10	50 (19-81)
Malvern Dialysis Centre	13	5	8	0	15	38 (14-68)	6	83 (36-100)
Monash Medical Centre	119	61	58	0	120	51 (42-61)	104	59 (49-68)
North Melbourne B.Braun Renal Care Centre	1	1	0	0	0	100 (2-100)	0	-
Northern Health Service Melbourne	34	15	19	0	42	44 (27-62)	28	54 (34-72)
Peninsula Health Renal Services	17	1	16	0	12	6 (0-29)	11	9 (0-41)
South Eastern Private Hospital Dialysis Centre	5	2	3	0	5	40 (5-85)	0	-
St Vincent's Hospital Melbourne	40	13	27	0	27	32 (19-49)	30	43 (25-63)

continued on next page

continued from previous page

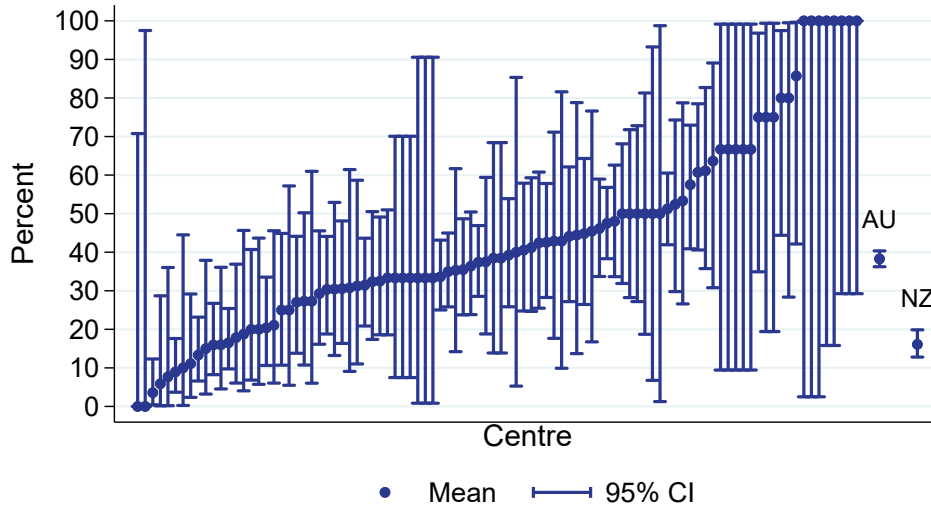
Centre	HD Patients	AVF or AVG	Vascular Catheter	Missing Access Data	2024 HD Patients	% of AVF or AVG (95 % CI)	Early Referral	% of Early Referrals with AVF or AVG
The Royal Melbourne Hospital	65	30	35	0	84	46 (34-59)	52	58 (43-71)
University Hospital Geelong Barwon Health	33	14	19	0	29	42 (25-61)	27	52 (32-71)
Western Health Service	70	22	48	0	68	31 (21-44)	54	37 (24-51)
Tasmania	43	25	18	0	39	58 (42-73)	38	63 (46-78)
Launceston General Hospital	15	8	7	0	17	53 (27-79)	10	70 (35-93)
Royal Hobart Hospital	28	17	11	0	22	61 (41-78)	28	61 (41-78)
South Australia	158	72	85	1	162	46 (38-54)	136	51 (43-60)
Central Northern Adelaide Renal Service	121	57	63	1	122	48 (38-57)	104	53 (43-63)
Central Adelaide Local Health Network	67	31	35	1	-	47 (35-60)	56	54 (40-67)
Central Northern Adelaide Renal Service (2024 starts)	34	16	18	0	122	47 (30-65)	28	54 (34-72)
Northern Adelaide Local Health Network	20	10	10	0	-	50 (27-73)	20	50 (27-73)
Flinders Medical Centre	37	15	22	0	40	41 (25-58)	32	47 (29-65)
Northern Territory	110	28	82	0	99	25 (18-35)	97	29 (20-39)
Alice Springs Hospital	54	11	43	0	53	20 (11-34)	49	22 (12-37)
Royal Darwin Hospital	56	17	39	0	46	30 (19-44)	48	35 (22-51)
Western Australia	276	101	174	1	246	37 (31-43)	190	41 (33-48)
Fiona Stanley Hospital	114	38	75	1	92	34 (25-43)	60	38 (26-52)
Royal Perth Hospital	115	43	72	0	84	37 (29-47)	101	41 (31-51)
Sir Charles Gairdner Hospital	47	20	27	0	70	43 (28-58)	29	45 (26-64)
New Zealand	446	71	370	5	445	16 (13-20)	357	18 (14-23)
Auckland City Hospital	56	2	54	0	55	4 (0-12)	48	4 (1-14)
Bay of Plenty Renal Service	1	1	0	0	0	100 (2-100)	1	100 (2-100)
Christchurch Hospital	26	5	20	1	14	20 (7-41)	22	23 (8-45)
Dunedin Hospital	7	6	1	0	11	86 (42-100)	7	86 (42-100)
Hawkes Bay Hospital	16	3	13	0	10	19 (4-46)	12	25 (5-57)
Middlemore Hospital	97	16	81	0	129	16 (10-25)	78	18 (10-28)
Palmerston North Hospital	29	5	23	1	31	18 (6-37)	14	29 (8-58)

continued on next page

continued from previous page

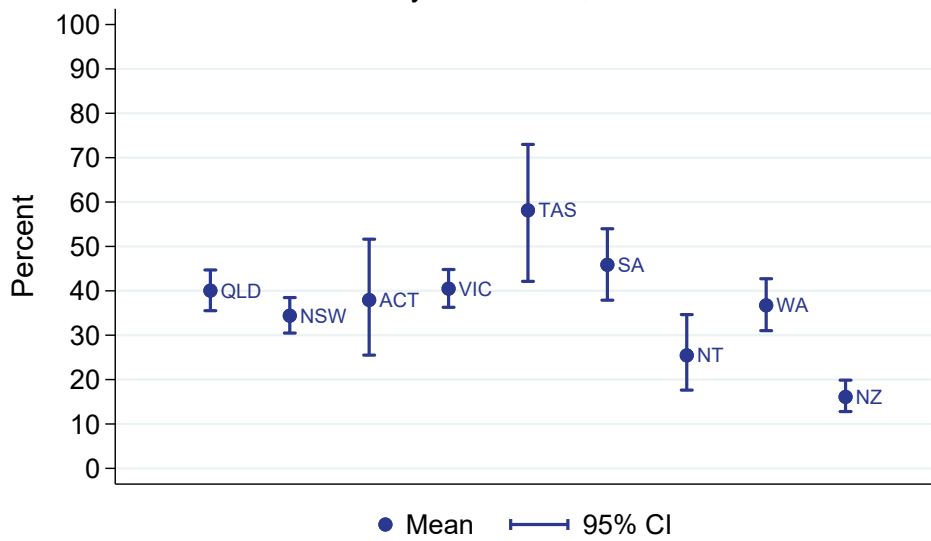
Centre	HD Patients	AVF or AVG	Vascular Catheter	Missing Access Data	2024 HD Patients	% of AVF or AVG (95 % CI)	Early Referral	% of Early Referrals with AVF or AVG
Taranaki Hospital	3	1	2	0	3	33 (1-91)	2	50 (1-99)
Waikato Hospital	79	7	71	1	89	9 (4-18)	58	12 (5-23)
Waitemata Renal Service	69	11	58	0	43	16 (8-27)	60	13 (6-25)
Wellington Regional Hospital	36	11	23	2	36	32 (17-51)	28	39 (22-59)
Whangarei Hospital	27	3	24	0	24	11 (2-29)	27	11 (2-29)

HD vascular access planning (AVF/AVG at first HD)
 % of all HD patients at day 90, Adults
 01 January 2025 - 31 December 2025



All HD patients at day 90 including those late referred

HD vascular access planning (AVF/AVG at first HD)
 % of all HD patients at day 90, Adults
 By Jurisdiction, 2025



2.3.2 Paediatric

This table presents the numbers of patients on haemodialysis at day 90 and the percentage starting haemodialysis with a permanent vascular access (an AVF or AVG) during the observation window by Centre. Modality changes of less than 30 days are ignored for the determination of modality at day 90. Patients are included in this paediatric report if they were treated at a paediatric hospital. In rare cases when patients younger than 18 years are treated at an adult centre, they are included in the adult report. Any patients 18 years and older treated at a paediatric hospital are included in this report. The number of HD patients at day 90 for 2024 is also provided to allow assessment of possible under-reporting. Finally, the total of Early Referrals (patients seen more than 3 months before first treatment) and the percentage of Early Referrals with a permanent access are also presented.

Centre	HD Patients	AVF or AVG	Vascular Catheter	Missing Access Data	2024 HD Patients	% of AVF or AVG (95 % CI)	Early Referral	% of Early Referrals with AVF or AVG
Australia	4	0	4	0	9	0 (0-60)	3	0 (0-71)
New South Wales	1	0	1	0	3	0 (0-98)	1	0 (0-98)
The Children's Hospital at Westmead	1	0	1	0	3	0 (0-98)	1	0 (0-98)
Victoria	2	0	2	0	4	0 (0-84)	2	0 (0-84)
Monash Children's Centre	1	0	1	0	1	0 (0-98)	1	0 (0-98)
Royal Children's Hospital	1	0	1	0	3	0 (0-98)	1	0 (0-98)
South Australia	1	0	1	0	0	0 (0-98)	0	-
Women's and Children's Hospital	1	0	1	0	0	0 (0-98)	0	-
New Zealand	1	0	1	0	1	0 (0-98)	1	0 (0-98)
Starship Children's Hospital	1	0	1	0	1	0 (0-98)	1	0 (0-98)

2.4 PD Catheter Planning

2.4.1 Adult

This table presents the numbers of patients on peritoneal dialysis at day 90 and the percentage starting kidney replacement therapy (KRT) with peritoneal dialysis during the observation window by Centre. Modality changes of less than 30 days are ignored for the determination of modality at day 90. Patients are excluded from this adult report if they were treated at a paediatric hospital. In rare cases when patients younger than 18 years are treated at an adult centre, they are included in this adult report. Any patients 18 years and older treated at a paediatric hospital are excluded from this report. The number of PD patients at day 90 for 2024 is also provided to allow assessment of possible under-reporting. Finally, the total of Early Referrals (patients seen more than 3 months before first treatment) and the percentage of Early Referrals starting with PD are also presented.

Centre	90-day PD Patients	Started KRT with PD	Did not start KRT with PD	2024 90-day PD Patients	% starting with PD (95 % CI)	Early Referral	% of Early Referrals starting with PD
Australia	767	708	59	902	92 (90-94)	701	94 (92-95)
Queensland	135	125	10	159	93 (87-96)	122	96 (91-99)
Bundaberg Hospital	4	4	0	3	100 (40-100)	4	100 (40-100)
Cairns Hospital	14	12	2	7	86 (57-98)	11	100 (72-100)
Gold Coast University Hospital	7	6	1	10	86 (42-100)	5	100 (48-100)
Hervey Bay Hospital	4	4	0	5	100 (40-100)	4	100 (40-100)
Ipswich Hospital	6	6	0	10	100 (54-100)	5	100 (48-100)
Mackay Base Hospital	3	3	0	3	100 (29-100)	3	100 (29-100)
Metro South Kidney and Transplant Services	36	35	1	52	97 (85-100)	32	97 (84-100)
<i>Logan Hospital</i>	<i>18</i>	<i>17</i>	<i>1</i>	<i>19</i>	<i>94 (73-100)</i>	<i>17</i>	<i>94 (71-100)</i>
<i>Princess Alexandra Hospital</i>	<i>18</i>	<i>18</i>	<i>0</i>	<i>33</i>	<i>100 (81-100)</i>	<i>15</i>	<i>100 (78-100)</i>
Rockhampton Hospital	2	2	0	9	100 (16-100)	2	100 (16-100)
Royal Brisbane and Women's Hospital	23	22	1	26	96 (78-100)	22	100 (85-100)
Sunshine Coast University Hospital	3	3	0	9	100 (29-100)	3	100 (29-100)
Toowoomba Hospital	21	20	1	14	95 (76-100)	19	100 (82-100)
Townsville University Hospital	12	8	4	11	67 (35-90)	12	67 (35-90)
New South Wales	275	259	16	286	94 (91-97)	252	95 (91-97)
Concord Repatriation General Hospital	10	9	1	12	90 (55-100)	10	90 (55-100)
Gosford Hospital	7	7	0	6	100 (59-100)	7	100 (59-100)
John Hunter Hospital	20	17	3	22	85 (62-97)	18	94 (73-100)
Lismore Base Hospital	7	7	0	3	100 (59-100)	6	100 (54-100)

continued on next page

continued from previous page

Centre	90-day PD Patients	Started KRT with PD	Did not start KRT with PD	2024 90-day PD Patients	% starting with PD (95 % CI)	Early Referral	% of Early Referrals starting with PD
Manning Rural Hospital	2	2	0	3	100 (16-100)	2	100 (16-100)
Orange Health Service	3	3	0	2	100 (29-100)	3	100 (29-100)
Royal North Shore Hospital	13	11	2	19	85 (55-98)	11	82 (48-98)
Royal Prince Alfred Hospital	5	5	0	9	100 (48-100)	5	100 (48-100)
South West Sydney Renal Service	63	63	0	63	100 (94-100)	57	100 (94-100)
St George Hospital	10	10	0	14	100 (69-100)	9	100 (66-100)
St Vincent's Hospital Sydney	3	3	0	4	100 (29-100)	3	100 (29-100)
Tamworth Hospital	7	6	1	4	86 (42-100)	7	86 (42-100)
The Prince of Wales Hospital	9	9	0	12	100 (66-100)	8	100 (63-100)
Tweed Valley Hospital	3	3	0	3	100 (29-100)	3	100 (29-100)
Wagga Wagga Base Hospital	1	0	1	5	0 (0-98)	0	-
Western Sydney Renal Health Services	92	86	6	87	93 (86-98)	83	93 (85-97)
<i>Nepean Hospital</i>	12	11	1	12	92 (62-100)	11	91 (59-100)
<i>Westmead Hospital</i>	80	75	5	75	94 (86-98)	72	93 (85-98)
Wollongong Hospital	20	18	2	12	90 (68-99)	20	90 (68-99)
Australian Capital Territory	9	9	0	16	100 (66-100)	9	100 (66-100)
Canberra Hospital	9	9	0	16	100 (66-100)	9	100 (66-100)
Victoria	203	189	14	246	93 (89-96)	184	95 (90-97)
Alfred Hospital	28	24	4	26	86 (67-96)	26	88 (70-98)
Austin Hospital	6	6	0	8	100 (54-100)	6	100 (54-100)
Ballarat Hospital	3	3	0	0	100 (29-100)	3	100 (29-100)
Bendigo Hospital	11	10	1	18	91 (59-100)	11	91 (59-100)
Eastern Health Integrated Renal Services	19	18	1	17	95 (74-100)	17	100 (80-100)
Monash Medical Centre	38	37	1	50	97 (86-100)	34	97 (85-100)
Northern Health Service Melbourne	6	6	0	13	100 (54-100)	5	100 (48-100)
St Vincent's Hospital Melbourne	22	22	0	29	100 (85-100)	19	100 (82-100)
The Royal Melbourne Hospital	35	32	3	36	91 (77-98)	30	97 (83-100)
University Hospital Geelong Barwon Health	7	6	1	13	86 (42-100)	7	86 (42-100)
Western Health Service	28	25	3	36	89 (72-98)	26	88 (70-98)

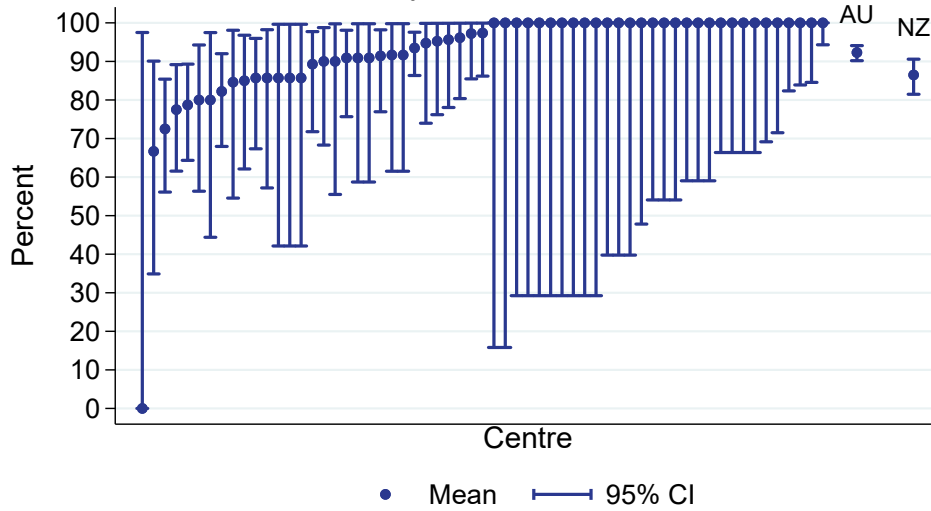
continued on next page

continued from previous page

Centre	90-day PD Patients	Started KRT with PD	Did not start KRT with PD	2024 90-day PD Patients	% starting with PD (95 % CI)	Early Referral	% of Early Referrals starting with PD
Tasmania	12	12	0	18	100 (74-100)	12	100 (74-100)
Launceston General Hospital	9	9	0	11	100 (66-100)	9	100 (66-100)
Royal Hobart Hospital	3	3	0	7	100 (29-100)	3	100 (29-100)
South Australia	47	36	11	61	77 (62-88)	47	77 (62-88)
Central Northern Adelaide Renal Service	40	29	11	48	72 (56-85)	40	72 (56-85)
Central Adelaide Local Health Network	24	18	6	-	75 (53-90)	24	75 (53-90)
Central Northern Adelaide Renal Service (2024 starts)	10	10	0	48	100 (69-100)	10	100 (69-100)
Northern Adelaide Local Health Network	6	1	5	-	17 (0-64)	6	17 (0-64)
Flinders Medical Centre	7	7	0	13	100 (59-100)	7	100 (59-100)
Northern Territory	12	11	1	10	92 (62-100)	12	92 (62-100)
Royal Darwin Hospital	12	11	1	10	92 (62-100)	12	92 (62-100)
Western Australia	74	67	7	106	91 (81-96)	63	94 (85-98)
Fiona Stanley Hospital	21	21	0	38	100 (84-100)	21	100 (84-100)
Royal Perth Hospital	20	16	4	36	80 (56-94)	19	84 (60-97)
Sir Charles Gairdner Hospital	33	30	3	32	91 (76-98)	23	96 (78-100)
New Zealand	237	205	32	216	86 (81-91)	208	90 (85-94)
Auckland City Hospital	19	19	0	16	100 (82-100)	18	100 (81-100)
Bay of Plenty Renal Service	3	3	0	5	100 (29-100)	3	100 (29-100)
Christchurch Hospital	26	25	1	15	96 (80-100)	21	95 (76-100)
Dunedin Hospital	11	10	1	5	91 (59-100)	10	100 (69-100)
Hawkes Bay Hospital	12	11	1	9	92 (62-100)	11	91 (59-100)
Middlemore Hospital	40	31	9	47	78 (62-89)	31	87 (70-96)
Palmerston North Hospital	11	11	0	1	100 (72-100)	9	100 (66-100)
Taranaki Hospital	4	4	0	8	100 (40-100)	4	100 (40-100)
Waikato Hospital	45	37	8	46	82 (68-92)	40	85 (70-94)
Waitemata Renal Service	9	9	0	22	100 (66-100)	8	100 (63-100)
Wellington Regional Hospital	47	37	10	33	79 (64-89)	44	82 (67-92)
Whangarei Hospital	10	8	2	9	80 (44-97)	9	89 (52-100)

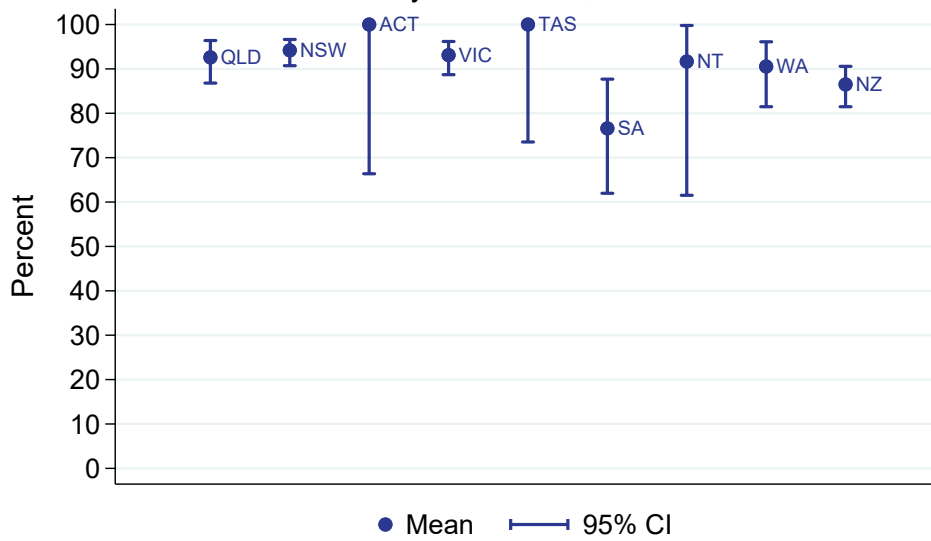
INTERIM

PD catheter planning (PD at start)
 % of all PD patients at day 90, Adults
 01 January 2025 - 31 December 2025



All PD patients at day 90 including those late referred

PD catheter planning (PD at start)
 % of all PD patients at day 90, Adults
 By Jurisdiction, 2025



2.4.2 Paediatric

This table presents the numbers of patients on peritoneal dialysis at day 90 and the percentage starting kidney replacement therapy (KRT) with peritoneal dialysis during the observation window by Centre. Modality changes of less than 30 days are ignored for the determination of modality at day 90. Patients are included in this paediatric report if they were treated at a paediatric hospital. In rare cases when patients younger than 18 years are treated at an adult centre, they are included in the adult report. Any patients 18 years and older treated at a paediatric hospital are included in this report. The number of HD patients at day 90 for 2024 is also provided to allow assessment of possible under-reporting. Finally, the total of Early Referrals (patients seen more than 3 months before first treatment) and the percentage of Early Referrals starting with PD are also presented.

Centre	90-day PD Patients	Started KRT with PD	Did not start KRT with PD	2024 90-day PD Patients	% starting with PD (95 % CI)	Early Referral	% of Early Referrals starting with PD
Australia	29	26	3	18	90 (73-98)	19	100 (82-100)
Queensland	3	1	2	9	33 (1-91)	1	100 (2-100)
Child and Adolescent Renal Service	3	1	2	9	33 (1-91)	1	100 (2-100)
New South Wales	4	4	0	3	100 (40-100)	3	100 (29-100)
Sydney Children's Hospital	3	3	0	2	100 (29-100)	3	100 (29-100)
The Children's Hospital at Westmead	1	1	0	1	100 (2-100)	0	-
Victoria	13	12	1	5	92 (64-100)	8	100 (63-100)
Monash Children's Centre	3	2	1	2	67 (9-99)	2	100 (16-100)
Royal Children's Hospital	10	10	0	3	100 (69-100)	6	100 (54-100)
South Australia	3	3	0	1	100 (29-100)	3	100 (29-100)
Women's and Children's Hospital	3	3	0	1	100 (29-100)	3	100 (29-100)
Western Australia	6	6	0	0	100 (54-100)	4	100 (40-100)
Perth Children's Hospital	6	6	0	0	100 (54-100)	4	100 (40-100)
New Zealand	9	9	0	3	100 (66-100)	7	100 (59-100)
Starship Children's Hospital	9	9	0	3	100 (66-100)	7	100 (59-100)

3 Transplantation Wait Listing

3.1 Adult

This table presents the numbers of patients aged <65 years who have received kidney replacement therapy (KRT) for 6 months, and the percentage who are transplanted or on the wait list within 6 months of KRT start during the observation window by Centre. The 6 month follow-up time means these patients commenced KRT between Jul 2024 and Jun 2025. The number of patients aged <65 years commencing KRT between Jul 2023 and Jun 2024 is also provided to allow assessment of possible under-reporting. Patients are excluded from this adult report if they were treated at a paediatric hospital. In rare cases when patients younger than 18 years are treated at an adult centre, they are included in this adult report. Any patients 18 years and older treated at a paediatric hospital are excluded from this report. This quality indicator is presented for Australia only as New Zealand transplant wait listing data is not currently available to ANZDATA.

Centre	Patients	Transplanted or on wait list within 6 months	Neither transplanted nor on wait list	Jul 2023-Jun 2024 Patients	% transplanted or on wait list within 6 months (95 % CI)
Australia	1772	279	1493	1843	16 (14-18)
Queensland	357	28	329	404	8 (5-11)
Bundaberg Hospital	12	0	12	6	0 (0-26)
Cairns Hospital	50	1	49	38	2 (0-11)
Chermside Dialysis Centre	1	0	1	4	0 (0-98)
Gold Coast Private Hospital	2	0	2	1	0 (0-84)
Gold Coast University Hospital	31	5	26	27	16 (5-34)
Henry Dalziel Dialysis Clinic - Greenslopes	6	0	6	8	0 (0-46)
Hervey Bay Hospital	6	1	5	6	17 (0-64)
Ipswich Hospital	20	0	20	25	0 (0-17)
John Flynn Private Hospital	2	0	2	1	0 (0-84)
Mackay Base Hospital	11	0	11	13	0 (0-28)
Mater Hospital, Brisbane	11	1	10	8	9 (0-41)
Mater Hospital, Townsville	1	0	1	2	0 (0-98)
Metro South Kidney and Transplant Services	74	5	69	95	7 (2-15)
<i>Logan Hospital</i>	30	1	29	32	3 (0-17)
<i>Princess Alexandra Hospital</i>	41	4	37	59	10 (3-23)
<i>Redlands Hospital</i>	3	0	3	4	0 (0-71)
Nambour Selangor Private Hospital	1	1	0	1	100 (2-100)
North Lakes Dialysis Centre	1	0	1	3	0 (0-98)

continued on next page

continued from previous page

Centre	Patients	Transplanted or on wait list within 6 months	Neither transplanted nor on wait list	Jul 2023-Jun 2024 Patients	% transplanted or on wait list within 6 months (95 % CI)
Queensland Kidney Transplant Service	1	1	0	1	100 (2-100)
Rockhampton Hospital	14	0	14	18	0 (0-23)
Royal Brisbane and Women's Hospital	39	2	37	48	5 (1-17)
St Andrew's Ipswich Private Hospital	1	0	1	1	0 (0-98)
Sunshine Coast University Hospital	16	5	11	21	31 (11-59)
The Wesley Hospital Brisbane	4	1	3	8	25 (1-81)
Toowoomba Hospital	19	1	18	21	5 (0-26)
Townsville University Hospital	34	4	30	43	12 (3-27)
New South Wales	485	65	420	475	13 (10-17)
Bathurst Base Hospital	1	0	1	2	0 (0-98)
Coffs Harbour Hospital	4	0	4	9	0 (0-60)
Concord Repatriation General Hospital	16	3	13	15	19 (4-46)
Dubbo Base Hospital	11	1	10	15	9 (0-41)
Gosford Hospital	16	3	13	12	19 (4-46)
Gregory Hills B.Braun Renal Care Centre	3	0	3	0	0 (0-71)
John Hunter Hospital	43	7	36	26	16 (7-31)
Lismore Base Hospital	14	1	13	11	7 (0-34)
Manning Rural Hospital	6	0	6	8	0 (0-46)
Mater Hospital, North Sydney	1	0	1	2	0 (0-98)
Orange Health Service	5	0	5	12	0 (0-52)
Port Macquarie Base Hospital	4	0	4	7	0 (0-60)
Royal North Shore Hospital	31	12	19	37	39 (22-58)
Royal Prince Alfred Hospital	22	10	12	22	45 (24-68)
South West Sydney Renal Service	87	2	85	82	2 (0-8)
St George Hospital	21	7	14	30	33 (15-57)
St Vincent's Hospital Sydney	14	2	12	14	14 (2-43)
St Vincent's Lismore Private Dialysis Centre	1	0	1	0	0 (0-98)
Tamworth Hospital	13	0	13	11	0 (0-25)
The Prince of Wales Hospital	12	5	7	11	42 (15-72)
Tweed Valley Hospital	4	0	4	8	0 (0-60)
Wagga Wagga Base Hospital	17	3	14	11	18 (4-43)

continued on next page

continued from previous page

Centre	Patients	Transplanted or on wait list within 6 months	Neither transplanted nor on wait list	Jul 2023-Jun 2024 Patients	% transplanted or on wait list within 6 months (95 % CI)
Western Sydney Renal Health Services	115	6	109	113	5 (2-11)
<i>Nepean Hospital</i>	27	1	26	20	4 (0-19)
<i>Westmead Hospital</i>	88	5	83	93	6 (2-13)
Wollongong Hospital	24	3	21	15	12 (3-32)
Australian Capital Territory	30	4	26	39	13 (4-31)
Canberra Hospital	30	4	26	35	13 (4-31)
Victoria	429	118	311	437	28 (23-32)
Alfred Hospital	38	12	26	31	32 (18-49)
Austin Hospital	34	18	16	27	53 (35-70)
Bendigo Hospital	15	1	14	16	7 (0-32)
Eastern Health Integrated Renal Services	24	6	18	28	25 (10-47)
Epworth Richmond Hospital	3	1	2	5	33 (1-91)
Malvern Dialysis Centre	2	0	2	2	0 (0-84)
Monash Medical Centre	95	29	66	107	31 (21-41)
Northern Health Service Melbourne	22	1	21	33	5 (0-23)
Peninsula Health Renal Services	9	1	8	4	11 (0-48)
South Eastern Private Hospital Dialysis Centre	2	0	2	0	0 (0-84)
St Vincent's Hospital Melbourne	41	13	28	28	32 (18-48)
The Royal Melbourne Hospital	61	22	39	70	36 (24-49)
University Hospital Geelong Barwon Health	18	2	16	24	11 (1-35)
Western Health Service	65	12	53	58	18 (10-30)
Tasmania	24	7	17	28	29 (13-51)
Launceston General Hospital	10	6	4	13	60 (26-88)
Royal Hobart Hospital	14	1	13	15	7 (0-34)
South Australia	131	22	109	132	17 (11-24)
Central Northern Adelaide Renal Service	109	19	90	109	17 (11-26)
<i>Central Adelaide Local Health Network</i>	41	10	31	-	24 (12-40)
<i>Central Northern Adelaide Renal Service (2024 starts)</i>	59	9	50	109	15 (7-27)

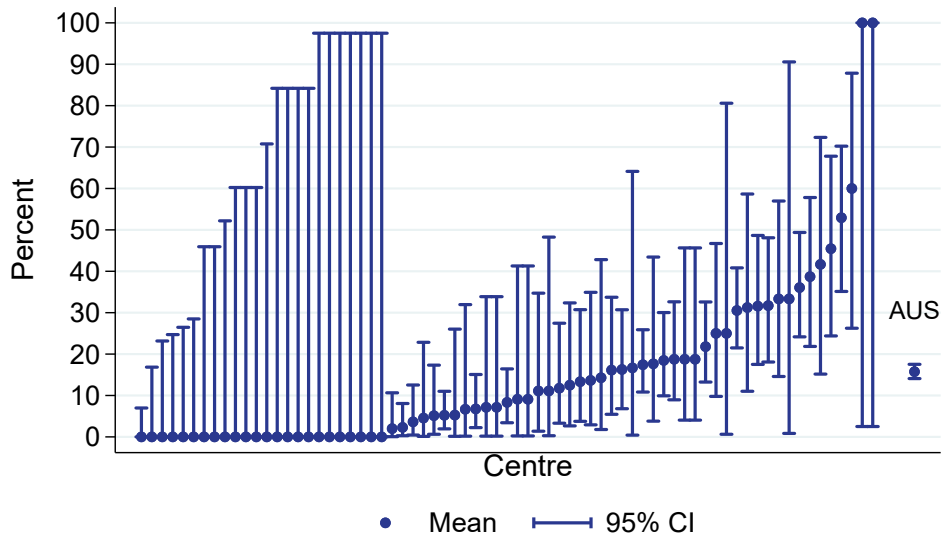
continued on next page

continued from previous page

Centre	Patients	Transplanted or on wait list within 6 months	Neither transplanted nor on wait list	Jul 2023-Jun 2024 Patients	% transplanted or on wait list within 6 months (95 % CI)
<i>Northern Adelaide Local Health Network</i>	9	0	9	-	0 (0-34)
Flinders Medical Centre	22	3	19	23	14 (3-35)
Northern Territory	106	2	104	110	2 (0-7)
Alice Springs Hospital	51	0	51	43	0 (0-7)
Royal Darwin Hospital	55	2	53	67	4 (0-13)
Western Australia	210	33	177	218	16 (11-21)
Fiona Stanley Hospital	78	17	61	86	22 (13-33)
Royal Perth Hospital	84	7	77	69	8 (3-16)
Sir Charles Gairdner Hospital	48	9	39	63	19 (9-33)

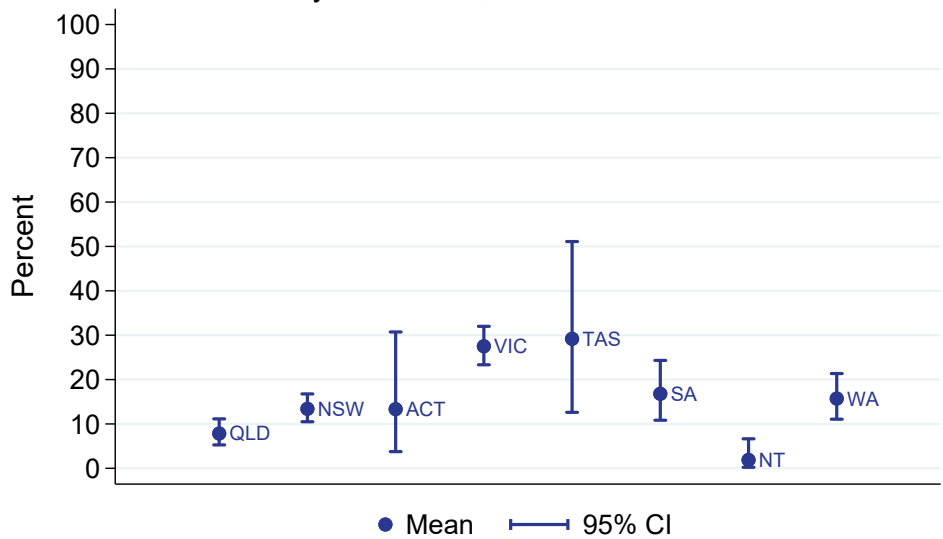
Transplantation wait listing (had a tx or on wl within 6 months)
 % of all new adult patients aged <65 years

Jul 2024 - Jun 2025



Transplantation wait listing (had a tx or on wl within 6 months)
 % of all new adult patients aged <65 years

By Jurisdiction, Jul 2024 - Jun 2025



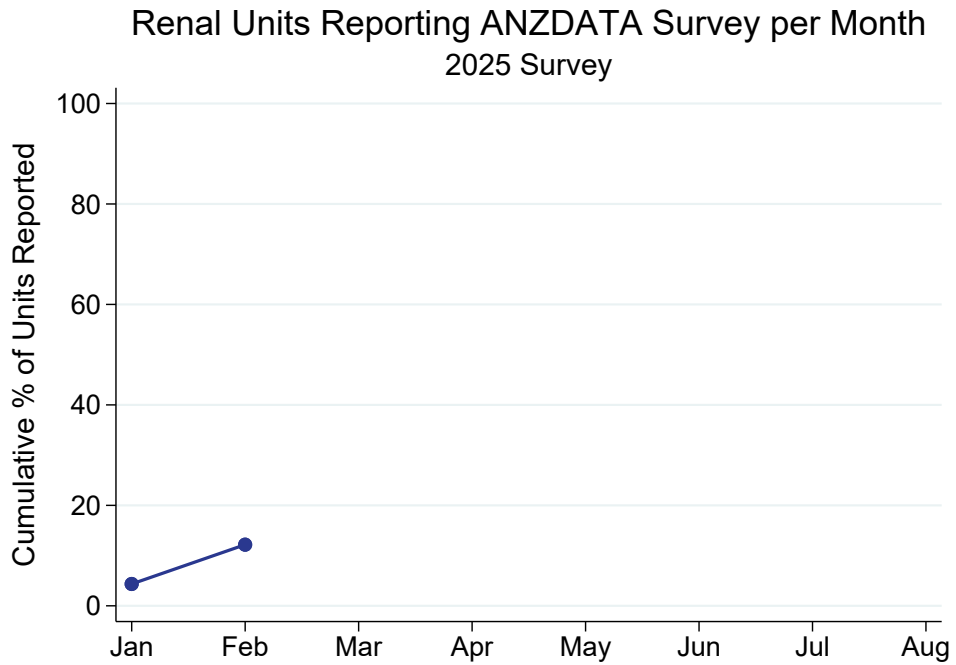
3.2 Paediatric

This table presents the numbers of patients aged ≥ 2 years who have received kidney replacement therapy (KRT) for 6 months, and the percentage who are transplanted or on the wait list within 6 months of KRT start during the observation window by Centre. The 6 month follow-up time means these patients commenced KRT between Jul 2024 and Jun 2025. The number of patients aged < 65 years commencing KRT between Jul 2023 and Jun 2024 is also provided to allow assessment of possible under-reporting. Patients are included in this paediatric report if they were treated at a paediatric hospital. In rare cases when patients younger than 18 years are treated at an adult centre, they are included in the adult report. Any patients 18 years and older treated at a paediatric hospital are included in this report. This quality indicator is presented for Australia only as New Zealand transplant wait listing data is not currently available to ANZDATA.

Centre	Patients	Transplanted or on wait list within 6 months	Neither transplanted nor on wait list	Jul 2023-Jun 2024 Patients	% transplanted or on wait list within 6 months (95 % CI)
Australia	39	20	19	22	51 (35-68)
Queensland	3	1	2	10	33 (1-91)
Child and Adolescent Renal Service	3	1	2	10	33 (1-91)
New South Wales	10	7	3	5	70 (35-93)
Sydney Children's Hospital	4	3	1	2	75 (19-99)
The Children's Hospital at Westmead	6	4	2	3	67 (22-96)
Victoria	17	10	7	5	59 (33-82)
Monash Children's Centre	6	2	4	1	33 (4-78)
Royal Children's Hospital	11	8	3	4	73 (39-94)
South Australia	3	0	3	1	0 (0-71)
Women's and Children's Hospital	3	0	3	1	0 (0-71)
Western Australia	6	2	4	1	33 (4-78)
Perth Children's Hospital	6	2	4	1	33 (4-78)

4 ANZDATA annual data survey timeliness

This figure shows the cumulative percentage of renal units that returned their annual ANZDATA survey each month following 31 December 2025. The date of survey return is the date ANZDATA received notification that annual data submission and data validations have been addressed for data lock. This survey return date identifies a Renal Unit is complete for quality indicator reporting.



This table presents the month of annual ANZDATA survey return by each renal unit following 31 December 2025.

Centre	Month of return
Queensland	
Bundaberg Hospital	Jan
Cairns Hospital	
Cairns Private Hospital	Feb
Chermside Dialysis Centre	
Child and Adolescent Renal Service	Feb
Gold Coast Private Hospital	
Gold Coast University Hospital	
Henry Dalziel Dialysis Clinic - Greenslopes	
Hervey Bay Hospital	
Ipswich Hospital	
John Flynn Private Hospital	
Logan Hospital	
Mackay Base Hospital	
Mater Hospital, Brisbane	Feb
Mater Hospital, Townsville	
Morayfield B.Braun Renal Care Centre	
Mount Isa Base Hospital	
Nambour Selangor Private Hospital	
North Lakes Dialysis Centre	
North Queensland Kidney Transplant Service	Feb
Pindara Renal Unit	
Princess Alexandra Hospital	
Queensland Kidney Transplant Service	
Redlands Hospital	
Rockhampton Hospital	
Royal Brisbane and Women's Hospital	
St Andrew's Ipswich Private Hospital	
St Andrew's Toowoomba B.Braun's Dialysis Clinic	
Sunshine Coast University Hospital	
Sunshine Coast University Private Hospital	Feb
The Wesley Hospital Brisbane	
Toowoomba Hospital	
Torres & Cape Kidney Health	
Townsville University Hospital	
New South Wales	
Bathurst Base Hospital	
Coffs Harbour Hospital	
Concord Repatriation General Hospital	
Dubbo Base Hospital	
Gosford Hospital	
Gregory Hills B.Braun Renal Care Centre	
John Hunter Hospital	
Lismore Base Hospital	
Liverpool Private Dialysis Centre	
Manning Rural Hospital	
Mater Hospital, North Sydney	
Mayo Private Hospital	
Nepean Hospital	

continued on next page

continued from previous page

Centre	Month of return
Newcastle Dialysis Centre	
Orange Health Service	
Port Macquarie Base Hospital	Feb
Royal North Shore Hospital	
Royal Prince Alfred Hospital	
South West Sydney Renal Service	
St George Hospital	
St Vincent's Hospital Sydney	
St Vincent's Lismore Private Dialysis Centre	Jan
Sydney Adventist Hospital	
Sydney Children's Hospital	Feb
Tamworth Hospital	
The Children's Hospital at Westmead	
The Prince of Wales Hospital	
Tweed Valley Hospital	
Wagga Wagga Base Hospital	
Westmead Hospital	
Wollongong Hospital	
Australian Capital Territory	
Access Nephrology	
Canberra Hospital	
Victoria	
Alfred Hospital	
Austin Hospital	
Ballarat Hospital	
Bendigo Hospital	
Diamond Valley B.Braun Renal Care Centre	
Eastern Health Integrated Renal Services	
Epworth Eastern Hospital	Jan
Epworth Geelong Hospital	
Epworth Richmond Hospital	Feb
Forest Hill Dialysis Centre	
Malvern Dialysis Centre	Jan
Monash Children's Centre	Jan
Monash Medical Centre	
North Melbourne B.Braun Renal Care Centre	
Northern Health Service Melbourne	
Peninsula Health Renal Services	
Royal Children's Hospital	
South Eastern Private Hospital Dialysis Centre	
St Vincent's Hospital Melbourne	
Sunshine Private Dialysis Centre Fresenius	
The Royal Melbourne Hospital	
University Hospital Geelong Barwon Health	
Western Health Service	
Tasmania	
Launceston General Hospital	
Royal Hobart Hospital	

continued on next page

continued from previous page

Centre	Month of return
<p>South Australia Central Adelaide Local Health Network Flinders Medical Centre Northern Adelaide Local Health Network Women's and Children's Hospital</p> <p>Northern Territory Alice Springs Hospital Royal Darwin Hospital</p> <p>Western Australia Fiona Stanley Hospital Perth Children's Hospital Royal Perth Hospital Sir Charles Gairdner Hospital</p> <p>New Zealand Auckland City Hospital Bay of Plenty Renal Service Christchurch Hospital Dunedin Hospital Hawkes Bay Hospital Middlemore Hospital Palmerston North Hospital Starship Children's Hospital Taranaki Hospital Waikato Hospital Waitemata Renal Service Wellington Regional Hospital Whangarei Hospital</p>	<p>Feb</p>

5 Kidney Replacement Therapy (KRT) Modality

5.1 Incident Modality

5.1.1 Adult

This table presents the numbers (N) of incident kidney replacement therapy (KRT) patients during the observation window by modality at commencement and centre. Modality is categorised as pre-emptive kidney transplant (TX), peritoneal dialysis (PD), home haemodialysis (including commencing training) and community house haemodialysis (HHD*) and facility haemodialysis (FacHD). Also presented are the percentages (%) of each modality out of the total incident KRT cohort. The number of incident patients for 2024 from the analysis database is also provided to allow assessment of possible under-reporting. Patients are excluded from this adult report if they were treated at a paediatric hospital. In rare cases when patients younger than 18 years are treated at an adult centre, they are included in this adult report. Any patients 18 years and older treated at a paediatric hospital are excluded from this report.

Centre	N KRT	N TX	% TX	N PD	% PD	N HHD*	% HHD*	N FacHD	% FacHD	2024 N KRT
Australia	3138	90	3	734	23	41	1	2273	72	3442
Queensland	589	13	2	112	19	8	1	456	77	722
Bundaberg Hospital	23	0	0	4	17	0	0	19	83	23
Cairns Hospital	60	1	2	11	18	2	3	46	77	74
Cairns Private Hospital	1	0	0	0	0	0	0	1	100	4
Chermside Dialysis Centre	7	0	0	0	0	0	0	7	100	6
Gold Coast Private Hospital	13	0	0	0	0	0	0	13	100	6
Gold Coast University Hospital	46	1	2	4	9	3	7	38	83	60
Henry Dalziel Dialysis Clinic - Greenslopes	32	1	3	0	0	0	0	31	97	24
Hervey Bay Hospital	10	1	10	1	10	0	0	8	80	24
Ipswich Hospital	29	0	0	8	28	0	0	21	72	32
John Flynn Private Hospital	8	0	0	0	0	0	0	8	100	5
Mackay Base Hospital	13	0	0	1	8	0	0	12	92	16
Mater Hospital, Brisbane	14	1	7	0	0	0	0	13	93	12
Mater Hospital, Townsville	6	0	0	0	0	0	0	6	100	5
Metro South Kidney and Transplant Services	93	1	1	30	32	3	3	59	63	137
<i>Logan Hospital</i>	<i>30</i>	<i>0</i>	<i>0</i>	<i>12</i>	<i>40</i>	<i>0</i>	<i>0</i>	<i>18</i>	<i>60</i>	<i>55</i>
<i>Princess Alexandra Hospital</i>	<i>58</i>	<i>1</i>	<i>2</i>	<i>18</i>	<i>31</i>	<i>3</i>	<i>5</i>	<i>36</i>	<i>62</i>	<i>75</i>
<i>Redlands Hospital</i>	<i>5</i>	<i>0</i>	<i>0</i>	<i>0</i>	<i>0</i>	<i>0</i>	<i>0</i>	<i>5</i>	<i>100</i>	<i>7</i>
Morayfield B.Braun Renal Care Centre	2	0	0	0	0	0	0	2	100	1
Nambour Selangor Private Hospital	2	0	0	0	0	0	0	2	100	2
North Lakes Dialysis Centre	2	0	0	0	0	0	0	2	100	10

continued on next page

continued from previous page

Centre	N KRT	N TX	% TX	N PD	% PD	N HHD*	% HHD*	N FacHD	% FacHD	2024 N KRT
Queensland Kidney Transplant Service	3	3	100	0	0	0	0	0	0	1
Rockhampton Hospital	30	1	3	5	17	0	0	24	80	26
Royal Brisbane and Women's Hospital	57	0	0	22	39	0	0	35	61	74
St Andrew's Ipswich Private Hospital	11	0	0	0	0	0	0	11	100	10
St Andrew's Toowoomba B.Braun's Dialysis Clinic	3	0	0	0	0	0	0	3	100	9
Sunshine Coast University Hospital	34	2	6	3	9	0	0	29	85	32
Sunshine Coast University Private Hospital	4	0	0	0	0	0	0	4	100	4
The Wesley Hospital Brisbane	1	0	0	0	0	0	0	1	100	29
Toowoomba Hospital	37	0	0	18	49	0	0	19	51	28
Townsville University Hospital	48	1	2	5	10	0	0	42	88	61
New South Wales	901	29	3	280	31	14	2	578	64	962
Bathurst Base Hospital	2	0	0	0	0	0	0	2	100	1
Coffs Harbour Hospital	10	0	0	0	0	0	0	10	100	12
Concord Repatriation General Hospital	34	1	3	11	32	0	0	22	65	39
Dubbo Base Hospital	13	0	0	0	0	0	0	13	100	22
Gosford Hospital	41	0	0	8	20	0	0	33	80	39
Gregory Hills B.Braun Renal Care Centre	3	0	0	0	0	0	0	3	100	4
John Hunter Hospital	61	2	3	16	26	1	2	42	69	70
Lismore Base Hospital	23	0	0	7	30	0	0	16	70	22
Liverpool Private Dialysis Centre	3	0	0	0	0	0	0	3	100	2
Manning Rural Hospital	14	0	0	1	7	1	7	12	86	11
Mater Hospital, North Sydney	2	1	50	0	0	0	0	1	50	5
Mayo Private Hospital	2	0	0	0	0	0	0	2	100	3
Newcastle Dialysis Centre	3	0	0	0	0	0	0	3	100	2
Orange Health Service	10	0	0	3	30	0	0	7	70	17
Port Macquarie Base Hospital	12	0	0	0	0	0	0	12	100	18
Royal North Shore Hospital	56	3	5	19	34	1	2	33	59	65
Royal Prince Alfred Hospital	32	7	22	6	19	0	0	19	59	46
South West Sydney Renal Service	175	4	2	70	40	3	2	98	56	167
St George Hospital	41	2	5	9	22	0	0	30	73	41
St Vincent's Hospital Sydney	29	2	7	5	17	0	0	22	76	23
St Vincent's Lismore Private Dialysis Centre	4	0	0	0	0	0	0	4	100	5
Sydney Adventist Hospital	13	0	0	0	0	0	0	13	100	6

continued on next page

continued from previous page

Centre	N KRT	N TX	% TX	N PD	% PD	N HHD*	% HHD*	N FacHD	% FacHD	2024 N KRT
Tamworth Hospital	22	0	0	4	18	0	0	18	82	27
The Prince of Wales Hospital	16	1	6	11	69	0	0	4	25	20
Tweed Valley Hospital	15	0	0	2	13	0	0	13	87	15
Wagga Wagga Base Hospital	21	2	10	0	0	0	0	19	90	36
Western Sydney Renal Health Services	199	4	2	90	45	7	4	98	49	212
<i>Nepean Hospital</i>	40	0	0	10	25	1	2	29	72	53
<i>Westmead Hospital</i>	159	4	3	80	50	6	4	69	43	159
Wollongong Hospital	45	0	0	18	40	1	2	26	58	32
Australian Capital Territory	61	2	3	7	11	1	2	51	84	78
Access Nephrology	2	1	50	0	0	0	0	1	50	10
Canberra Hospital	59	1	2	7	12	1	2	50	85	68
Victoria	786	33	4	206	26	8	1	539	69	879
Alfred Hospital	56	5	9	29	52	0	0	22	39	69
Austin Hospital	54	10	19	7	13	2	4	35	65	62
Ballarat Hospital	16	0	0	5	31	0	0	11	69	0
Bendigo Hospital	22	0	0	11	50	0	0	11	50	34
Diamond Valley B.Braun Renal Care Centre	1	0	0	0	0	0	0	1	100	3
Eastern Health Integrated Renal Services	60	0	0	16	27	0	0	44	73	57
Epworth Eastern Hospital	5	0	0	0	0	0	0	5	100	10
Epworth Richmond Hospital	9	0	0	0	0	0	0	9	100	14
Malvern Dialysis Centre	14	0	0	0	0	0	0	14	100	15
Monash Medical Centre	170	5	3	32	19	3	2	130	76	193
North Melbourne B.Braun Renal Care Centre	1	0	0	0	0	0	0	1	100	0
Northern Health Service Melbourne	42	1	2	5	12	0	0	36	86	60
Peninsula Health Renal Services	19	0	0	0	0	0	0	19	100	16
South Eastern Private Hospital Dialysis Centre	4	0	0	0	0	0	0	4	100	4
St Vincent's Hospital Melbourne	58	1	2	22	38	0	0	35	60	63
The Royal Melbourne Hospital	108	10	9	35	32	3	3	60	56	128
University Hospital Geelong Barwon Health	36	1	3	9	25	0	0	26	72	39
Western Health Service	111	0	0	35	32	0	0	76	68	108
Tasmania	54	0	0	11	20	0	0	43	80	63

continued on next page

continued from previous page

Centre	N KRT	N TX	% TX	N PD	% PD	N HHD*	% HHD*	N FacHD	% FacHD	2024 N KRT
Launceston General Hospital	26	0	0	8	31	0	0	18	69	29
Royal Hobart Hospital	28	0	0	3	11	0	0	25	89	34
South Australia	221	7	3	32	14	1	0	181	82	245
Central Northern Adelaide Renal Service	174	6	3	21	12	1	1	146	84	190
<i>Central Adelaide Local Health Network</i>	138	6	4	20	14	0	0	112	81	-
<i>Northern Adelaide Local Health Network</i>	36	0	0	1	3	1	3	34	94	-
Flinders Medical Centre	47	1	2	11	23	0	0	35	74	55
Northern Territory	142	0	0	11	8	0	0	131	92	112
Alice Springs Hospital	60	0	0	0	0	0	0	60	100	52
Royal Darwin Hospital	82	0	0	11	13	0	0	71	87	60
Western Australia	384	6	2	75	20	9	2	294	77	381
Fiona Stanley Hospital	170	5	3	25	15	5	3	135	79	141
Royal Perth Hospital	133	1	1	19	14	2	2	111	83	142
Sir Charles Gairdner Hospital	81	0	0	31	38	2	2	48	59	98
New Zealand	698	21	3	224	32	7	1	446	64	756
Auckland City Hospital	68	6	9	20	29	0	0	42	62	83
Bay of Plenty Renal Service	2	0	0	2	100	0	0	0	0	2
Christchurch Hospital	57	4	7	28	49	0	0	25	44	43
Dunedin Hospital	21	2	10	12	57	0	0	7	33	25
Hawkes Bay Hospital	29	0	0	13	45	0	0	16	55	21
Middlemore Hospital	153	2	1	40	26	3	2	108	71	174
Palmerston North Hospital	39	0	0	12	31	2	5	25	64	34
Taranaki Hospital	6	0	0	2	33	0	0	4	67	14
Waikato Hospital	140	2	1	48	34	1	1	89	64	151
Waitemata Renal Service	65	0	0	6	9	1	2	58	89	84
Wellington Regional Hospital	74	5	7	30	41	0	0	39	53	87
Whangarei Hospital	44	0	0	11	25	0	0	33	75	38

5.1.2 Paediatric

This table presents the numbers (N) of incident kidney replacement therapy (KRT) patients during the observation window by modality at commencement and centre. Modality is categorised as pre-emptive kidney transplant (TX), peritoneal dialysis (PD), home haemodialysis (including commencing training) and community house haemodialysis (HHD*) and facility haemodialysis (FacHD). Also presented are the percentages (%) of each modality out of the total incident KRT cohort. The number of incident patients for 2024 from the analysis database is also provided to allow assessment of possible under-reporting. Patients are included in this paediatric report if they were treated at a paediatric hospital. In rare cases when patients younger than 18 years are treated at an adult centre, they are included in the adult report. Any patients 18 years and older treated at a paediatric hospital are included in this report.

Centre	N KRT	N TX	% TX	N PD	% PD	N HHD*	% HHD*	N FacHD	% FacHD	2024 N KRT
Australia	44	12	27	24	55	0	0	8	18	38
Queensland	5	0	0	2	40	0	0	3	60	9
Child and Adolescent Renal Service	5	0	0	2	40	0	0	3	60	9
New South Wales	14	8	57	4	29	0	0	2	14	7
Sydney Children's Hospital	3	0	0	3	100	0	0	0	0	3
The Children's Hospital at Westmead	11	8	73	1	9	0	0	2	18	4
Victoria	14	2	14	11	79	0	0	1	7	17
Monash Children's Centre	5	1	20	3	60	0	0	1	20	5
Royal Children's Hospital	9	1	11	8	89	0	0	0	0	12
South Australia	4	2	50	1	25	0	0	1	25	3
Women's and Children's Hospital	4	2	50	1	25	0	0	1	25	3
Western Australia	7	0	0	6	86	0	0	1	14	2
Perth Children's Hospital	7	0	0	6	86	0	0	1	14	2
New Zealand	13	4	31	8	62	0	0	1	8	4
Starship Children's Hospital	13	4	31	8	62	0	0	1	8	4

5.2 Prevalent Modality

5.2.1 Adult

This table presents the numbers (N) of prevalent kidney replacement therapy (KRT) patients at the end of the observation window by modality and centre. Modality is categorised as functioning kidney transplant (TX), peritoneal dialysis (PD), hybrid peritoneal dialysis and haemodialysis (Hybrid), home haemodialysis including community house haemodialysis (HHD*) and facility haemodialysis (FacHD). Also presented are the percentages (%) of each modality out of the total prevalent KRT cohort. The number of prevalent patients for 2024 from the analysis database is also provided to allow assessment of possible under-reporting. Patients are excluded from this adult report if they were treated at a paediatric hospital. In rare cases when patients younger than 18 years are treated at an adult centre, they are included in this adult report. Any patients 18 years and older treated at a paediatric hospital are excluded from this report.

Centre	N KRT	N TX	% TX	N PD	% PD	N Hybrid	% Hybrid	N HHD*	% HHD*	N FacHD	% FacHD	2024 N KRT
Australia	30447	14374	47	2522	8	33	0	941	3	12577	41	29774
Queensland	5988	2715	45	418	7	3	0	187	3	2665	45	5914
Bundaberg Hospital	139	55	40	8	6	0	0	2	1	74	53	145
Cairns Hospital	465	125	27	36	8	0	0	29	6	275	59	470
Cairns Private Hospital	22	0	0	0	0	0	0	0	0	22	100	22
Chermside Dialysis Centre	62	28	45	0	0	0	0	0	0	34	55	56
Gold Coast Private Hospital	40	0	0	0	0	0	0	0	0	40	100	31
Gold Coast University Hospital	509	284	56	26	5	1	0	29	6	169	33	499
Henry Dalziel Dialysis Clinic - Greenslopes	222	102	46	0	0	0	0	0	0	120	54	211
Hervey Bay Hospital	129	44	34	21	16	0	0	0	0	64	50	132
Ipswich Hospital	140	20	14	21	15	0	0	0	0	99	71	131
John Flynn Private Hospital	116	83	72	0	0	0	0	0	0	33	28	113
Mackay Base Hospital	177	76	43	7	4	2	1	0	0	92	52	179
Mater Hospital, Brisbane	155	80	52	0	0	0	0	0	0	75	48	153
Mater Hospital, Townsville	36	2	6	0	0	0	0	0	0	34	94	35
Metro South Kidney and Transplant Services	548	1	0	127	23	0	0	58	11	362	66	679
Logan Hospital	209	1	0	56	27	0	0	0	0	152	73	292
Princess Alexandra Hospital	276	0	0	70	25	0	0	58	21	148	54	294
Redlands Hospital	63	0	0	1	2	0	0	0	0	62	98	93
Morayfield B.Braun Renal Care Centre	7	0	0	0	0	0	0	0	0	7	100	5
Mount Isa Base Hospital	72	13	18	0	0	0	0	0	0	59	82	64
Nambour Selangor Private Hospital	19	0	0	0	0	0	0	0	0	19	100	15
North Lakes Dialysis Centre	47	2	4	0	0	0	0	0	0	45	96	43
North Queensland Kidney Transplant Service	7	7	100	0	0	0	0	0	0	0	0	0

continued on next page

continued from previous page

Centre	N KRT	N TX	% TX	N PD	% PD	N Hybrid	% Hybrid	N HHD*	% HHD*	N FacHD	% FacHD	2024 N KRT
Pindara Renal Unit	23	0	0	0	0	0	0	0	0	23	100	24
Queensland Kidney Transplant Service	818	817	100	0	0	0	0	0	0	1	0	675
Rockhampton Hospital	220	68	31	18	8	0	0	0	0	134	61	222
Royal Brisbane and Women's Hospital	626	258	41	59	9	0	0	32	5	277	44	627
St Andrew's Ipswich Private Hospital	44	7	16	0	0	0	0	0	0	37	84	44
St Andrew's Toowoomba B.Braun's Dialysis Clinic	31	0	0	0	0	0	0	0	0	31	100	26
Sunshine Coast University Hospital	413	252	61	10	2	0	0	11	3	140	34	416
Sunshine Coast University Private Hospital	22	0	0	0	0	0	0	0	0	22	100	22
The Wesley Hospital Brisbane	173	130	75	0	0	0	0	0	0	43	25	178
Toowoomba Hospital	282	121	43	50	18	0	0	18	6	93	33	273
Torres & Cape Kidney Health	59	23	39	0	0	0	0	0	0	36	61	59
Townsville University Hospital	365	117	32	35	10	0	0	8	2	205	56	365
New South Wales	8648	4003	46	963	11	8	0	351	4	3323	38	8463
Bathurst Base Hospital	30	13	43	0	0	0	0	0	0	17	57	29
Coffs Harbour Hospital	128	61	48	3	2	0	0	3	2	61	48	128
Concord Repatriation General Hospital	302	125	41	37	12	0	0	15	5	125	41	294
Dubbo Base Hospital	154	67	44	3	2	0	0	4	3	80	52	145
Gosford Hospital	327	121	37	21	6	0	0	5	2	180	55	308
Gregory Hills B.Braun Renal Care Centre	26	0	0	0	0	0	0	0	0	26	100	28
John Hunter Hospital	660	390	59	48	7	1	0	19	3	202	31	652
Lismore Base Hospital	218	106	49	14	6	0	0	13	6	85	39	206
Liverpool Private Dialysis Centre	38	0	0	0	0	0	0	0	0	38	100	35
Manning Rural Hospital	80	17	21	7	9	1	1	3	4	52	65	76
Mater Hospital, North Sydney	75	37	49	0	0	0	0	0	0	38	51	76
Mayo Private Hospital	15	0	0	0	0	0	0	0	0	15	100	19
Newcastle Dialysis Centre	41	0	0	0	0	0	0	0	0	41	100	39
Orange Health Service	126	49	39	12	10	0	0	3	2	62	49	119
Port Macquarie Base Hospital	113	34	30	6	5	1	1	1	1	71	63	110
Royal North Shore Hospital	733	392	53	65	9	0	0	40	5	236	32	708
Royal Prince Alfred Hospital	641	448	70	29	5	0	0	30	5	134	21	634
South West Sydney Renal Service	1294	476	37	240	19	0	0	74	6	504	39	1236
St George Hospital	478	259	54	26	5	0	0	19	4	174	36	483
St Vincent's Hospital Sydney	211	120	57	10	5	0	0	19	9	62	29	205

continued on next page

continued from previous page

Centre	N KRT	N TX	% TX	N PD	% PD	N Hybrid	% Hybrid	N HHD*	% HHD*	N FacHD	% FacHD	2024 N KRT
St Vincent's Lismore Private Dialysis Centre	18	0	0	0	0	0	0	0	0	18	100	15
Sydney Adventist Hospital	51	0	0	0	0	0	0	0	0	51	100	50
Tamworth Hospital	192	80	42	13	7	1	1	3	2	95	49	184
The Prince of Wales Hospital	302	195	65	32	11	0	0	4	1	71	24	305
Tweed Valley Hospital	75	14	19	9	12	0	0	0	0	52	69	80
Wagga Wagga Base Hospital	181	59	33	10	6	2	1	7	4	103	57	190
Western Sydney Renal Health Services	1749	771	44	328	19	1	0	79	5	570	33	1702
<i>Nepean Hospital</i>	361	145	40	42	12	0	0	5	1	169	47	357
<i>Westmead Hospital</i>	1388	626	45	286	21	1	0	74	5	401	29	1345
Wollongong Hospital	390	169	43	50	13	1	0	10	3	160	41	398
Australian Capital Territory	630	309	49	35	6	0	0	15	2	271	43	629
Access Nephrology	100	72	72	0	0	0	0	0	0	28	28	102
Canberra Hospital	530	237	45	35	7	0	0	15	3	243	46	527
Victoria	7998	4229	53	612	8	7	0	217	3	2933	37	7794
Alfred Hospital	487	295	61	67	14	3	1	7	1	115	24	480
Austin Hospital	767	522	68	29	4	0	0	19	2	197	26	754
Ballarat Hospital	87	0	0	20	23	0	0	0	0	67	77	0
Bendigo Hospital	154	25	16	43	28	1	1	0	0	85	55	158
Diamond Valley B.Braun Renal Care Centre	32	0	0	0	0	0	0	0	0	32	100	37
Eastern Health Integrated Renal Services	494	229	46	40	8	0	0	9	2	216	44	475
Epworth Eastern Hospital	42	0	0	0	0	0	0	0	0	42	100	49
Epworth Geelong Hospital	20	1	5	0	0	0	0	0	0	19	95	21
Epworth Richmond Hospital	29	0	0	0	0	0	0	0	0	29	100	31
Forest Hill Dialysis Centre	32	0	0	0	0	0	0	0	0	32	100	33
Malvern Dialysis Centre	65	0	0	0	0	0	0	0	0	65	100	63
Monash Medical Centre	1902	1136	60	117	6	0	0	79	4	570	30	1870
North Melbourne B.Braun Renal Care Centre	17	0	0	0	0	0	0	0	0	17	100	20
Northern Health Service Melbourne	303	71	23	30	10	0	0	11	4	191	63	295
Peninsula Health Renal Services	99	0	0	1	1	0	0	0	0	98	99	96
South Eastern Private Hospital Dialysis Centre	42	0	0	0	0	0	0	0	0	42	100	39
St Vincent's Hospital Melbourne	631	306	48	65	10	0	0	12	2	248	39	611
Sunshine Private Dialysis Centre Fresenius	28	0	0	0	0	0	0	0	0	28	100	31

continued on next page

continued from previous page

Centre	N KRT	N TX	% TX	N PD	% PD	N Hybrid	% Hybrid	N HHD*	% HHD*	N FacHD	% FacHD	2024 N KRT
The Royal Melbourne Hospital	1770	1275	72	70	4	0	0	29	2	396	22	1804
University Hospital Geelong Barwon Health	374	202	54	29	8	0	0	29	8	114	30	356
Western Health Service	623	167	27	101	16	3	0	22	4	330	53	571
Tasmania	572	334	58	41	7	0	0	11	2	186	33	569
Launceston General Hospital	302	167	55	29	10	0	0	7	2	99	33	303
Royal Hobart Hospital	270	167	62	12	4	0	0	4	1	87	32	266
South Australia	2319	1184	51	152	7	12	1	35	2	936	40	2261
Central Northern Adelaide Renal Service	1825	919	50	121	7	9	0	34	2	742	41	1761
Central Adelaide Local Health Network	1567	834	53	100	6	8	1	31	2	594	38	-
Northern Adelaide Local Health Network	258	85	33	21	8	1	0	3	1	148	57	-
Flinders Medical Centre	494	265	54	31	6	3	1	1	0	194	39	500
Northern Territory	1018	167	16	32	3	0	0	31	3	788	77	965
Alice Springs Hospital	493	67	14	0	0	0	0	0	0	426	86	473
Royal Darwin Hospital	525	100	19	32	6	0	0	31	6	362	69	492
Western Australia	3274	1433	44	269	8	3	0	94	3	1475	45	3179
Fiona Stanley Hospital	1277	584	46	93	7	2	0	36	3	562	44	1246
Royal Perth Hospital	971	302	31	76	8	1	0	29	3	563	58	937
Sir Charles Gairdner Hospital	1026	547	53	100	10	0	0	29	3	350	34	996
New Zealand	5882	2461	42	782	13	1	0	388	7	2250	38	5690
Auckland City Hospital	685	270	39	55	8	0	0	51	7	309	45	696
Bay of Plenty Renal Service	226	91	40	55	24	0	0	0	0	80	35	234
Christchurch Hospital	552	358	65	94	17	0	0	18	3	82	15	506
Dunedin Hospital	224	139	62	28	12	0	0	32	14	25	11	220
Hawkes Bay Hospital	192	87	45	21	11	0	0	12	6	72	38	183
Middlemore Hospital	1139	297	26	155	14	0	0	95	8	592	52	1116
Palmerston North Hospital	309	112	36	34	11	0	0	26	8	137	44	304
Taranaki Hospital	107	58	54	11	10	0	0	5	5	33	31	108
Waikato Hospital	756	254	34	150	20	0	0	79	10	273	36	706
Waitemata Renal Service	685	306	45	41	6	0	0	36	5	302	44	653

continued on next page

continued from previous page

Centre	N KRT	N TX	% TX	N PD	% PD	N Hybrid	% Hybrid	N HHD*	% HHD*	N FacHD	% FacHD	2024 N KRT
Wellington Regional Hospital	705	363	51	107	15	1	0	19	3	215	30	687
Whangarei Hospital	302	126	42	31	10	0	0	15	5	130	43	277

5.2.2 Paediatric

This table presents the numbers (N) of prevalent kidney replacement therapy (KRT) patients at the end of the observation window by modality and centre. Modality is categorised as functioning kidney transplant (TX), peritoneal dialysis (PD), hybrid peritoneal dialysis and haemodialysis (Hybrid), home haemodialysis including community house haemodialysis (HHD*) and facility haemodialysis (FacHD). Also presented are the percentages (%) of each modality out of the total prevalent KRT cohort. The number of prevalent patients for 2024 from the analysis database is also provided to allow assessment of possible under-reporting. Patients are included in this paediatric report if they were treated at a paediatric hospital. In rare cases when patients younger than 18 years are treated at an adult centre, they are included in the adult report. Any patients 18 years and older treated at a paediatric hospital are included in this report.

Centre	N KRT	N TX	% TX	N PD	% PD	N Hybrid	% Hybrid	N HHD*	% HHD*	N FacHD	% FacHD	2024 N KRT
Australia	316	254	80	45	14	1	0	0	0	16	5	319
Queensland	73	58	79	11	15	0	0	0	0	4	5	79
Child and Adolescent Renal Service	73	58	79	11	15	0	0	0	0	4	5	79
New South Wales	94	87	93	5	5	0	0	0	0	2	2	94
Sydney Children's Hospital	23	18	78	4	17	0	0	0	0	1	4	24
The Children's Hospital at Westmead	71	69	97	1	1	0	0	0	0	1	1	70
Victoria	100	73	73	19	19	1	1	0	0	7	7	105
Monash Children's Centre	31	19	61	6	19	1	3	0	0	5	16	32
Royal Children's Hospital	69	54	78	13	19	0	0	0	0	2	3	73
South Australia	20	16	80	3	15	0	0	0	0	1	5	17
Women's and Children's Hospital	20	16	80	3	15	0	0	0	0	1	5	17
Western Australia	29	20	69	7	24	0	0	0	0	2	7	24
Perth Children's Hospital	29	20	69	7	24	0	0	0	0	2	7	24
New Zealand	61	49	80	8	13	0	0	0	0	4	7	57
Starship Children's Hospital	61	49	80	8	13	0	0	0	0	4	7	57